

BLOOMINGTON/NORMAL, ILLINOIS


AL-5058 (FAA)

BLOOMINGTON/
NORMAL /
CENTRAL IL RGNL ARPT AT BLOOMINGTON-NORMAL (BMI)

ILS or LOC RWY 29

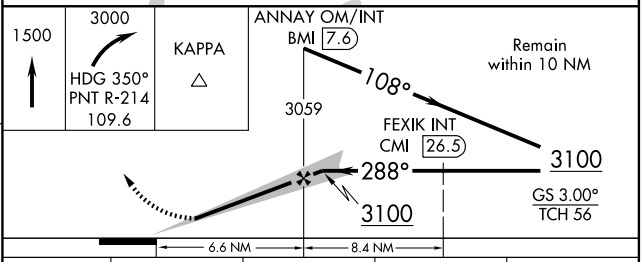
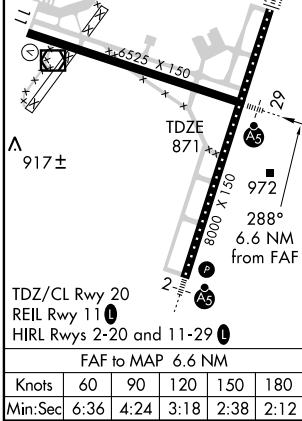
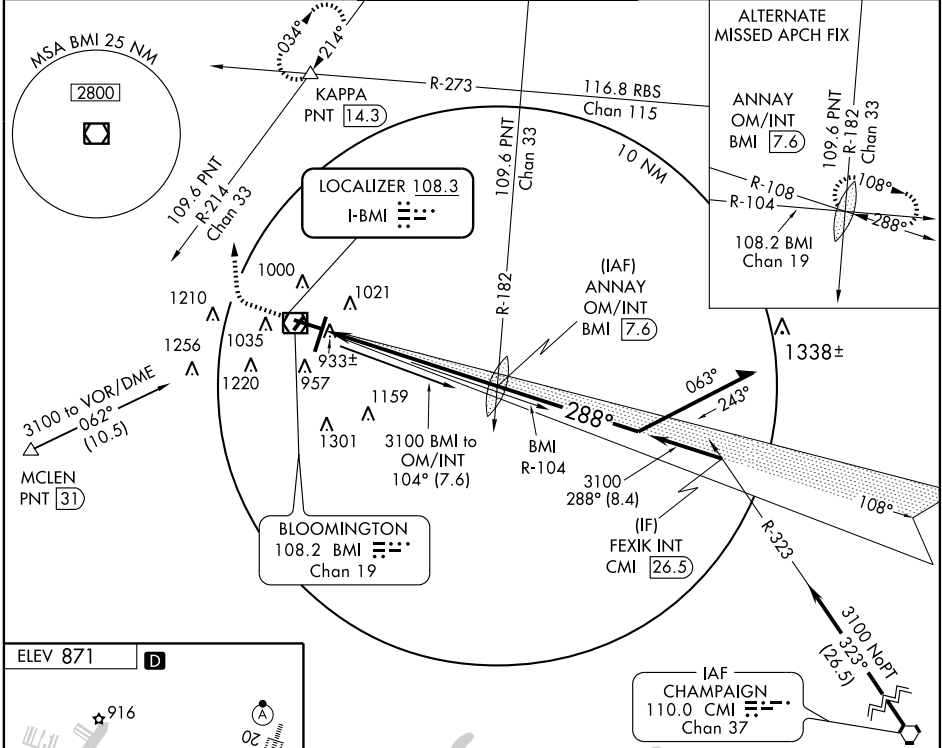
LOC I-BMI 108.3	APP CRS 288°	Rwy Idg TDZE Apt Elev	6525 871 871
---------------------------	------------------------	-----------------------------	---

When local altimeter setting not received, use Logan County altimeter setting and increase all DAs/MDAs 100 feet. For inoperative MALSR, increase S-LOC-29 Cat. D visibility to RVR 5000.
* RVR 1800 authorized with the use of FD or AP or HUD to DA.

MALSR 

MISSED APPROACH: Climb to 1500, then climbing right turn to 3000 via heading 350° and PNT R-214 to KAPPA Int/PNT 14.3 DME and hold.

ATIS 135.35	PEORIA APP CON 128.725 256.9	BLOOMINGTON TOWER * 124.6 (CTAF) 269.575	GND CON 121.65	UNICOM 122.95
-----------------------	--	--	--------------------------	-------------------------



CATEGORY	A	B	C	D
S-ILS 29	* 1071/24 200 (200-1/2)			
S-LOC 29	1200/24 329 (400-1/2)			1200/40 329 (400-3/4)
CIRCLING	1340-1 469 (500-1)		1340-1 1/2 469 (500-1 1/2)	1520-2 649 (700-2)

BLOOMINGTON/NORMAL, ILLINOIS
Amdt 9A 09295
40°29'N - 88°55'W

CENTRAL IL RGNL ARPT AT BLOOMINGTON-NORMAL (BMI)
BLOOMINGTON/NORMAL /
ILS or LOC RWY 29

EC-3, 22 OCT 2009 to 19 NOV 2009

EC-3, 22 OCT 2009 to 19 NOV 2009