

OCALA, FLORIDA

AL-5055 (FAA)

WAAS CH 58110 W36A	APP CRS 004°	Rwy Idg TDZE Apt Elev	6347 80 89
--	------------------------	-----------------------------	---------------------------------------

RNAV (GPS) RWY 36

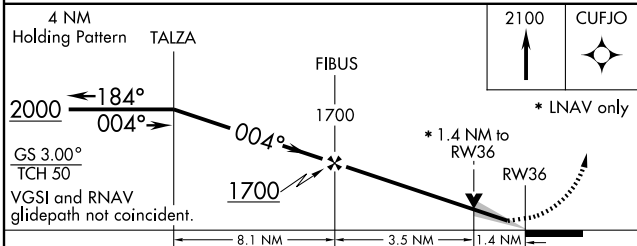
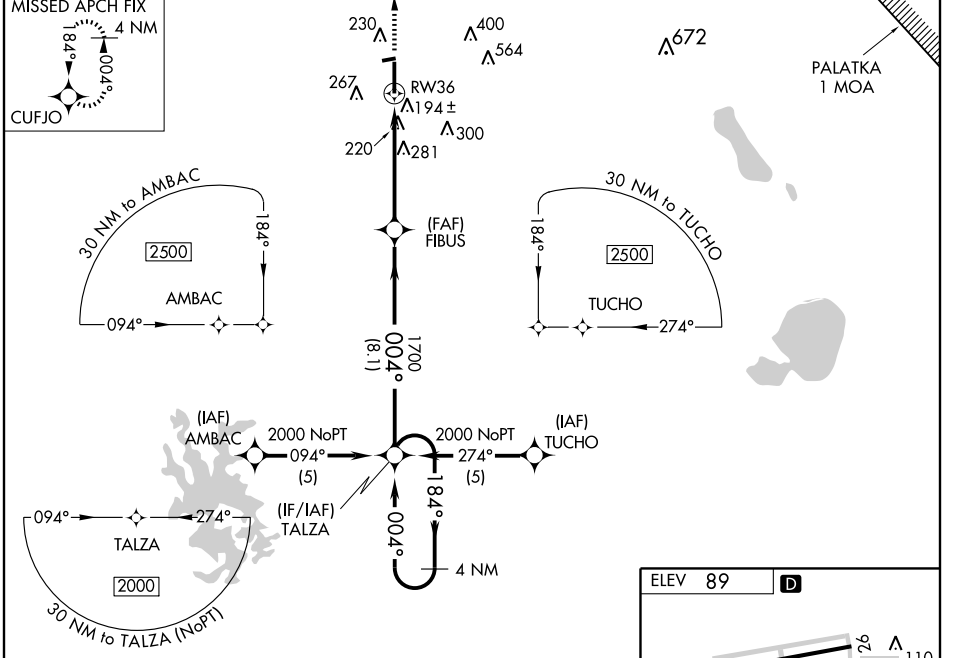
OCALA INTL-JIM TAYLOR FIELD (OCF)

⚠ For uncompensated Baro-VNAV systems, LNAV/VNAV NA below -15°C (5°F) or above 48°C (118°F). DME/DME RNP-0.3 NA. When local altimeter setting not received, use Gainesville altimeter setting and increase LPV DA to 361, LNAV/VNAV DA to 644, and all MDA 100 feet; increase LNAV/VNAV all Cats, and LNAV Cats C and D visibility 1/4 mile. VDP and Baro-VNAV NA when using Gainesville altimeter setting. Inoperative table does not apply to LPV when using local altimeter setting. For inoperative MALS, increase LNAV Cats A and B visibility to 1 mile. For inoperative MALS when using Gainesville altimeter setting, increase LNAV Cats A and B visibility to 1 mile.

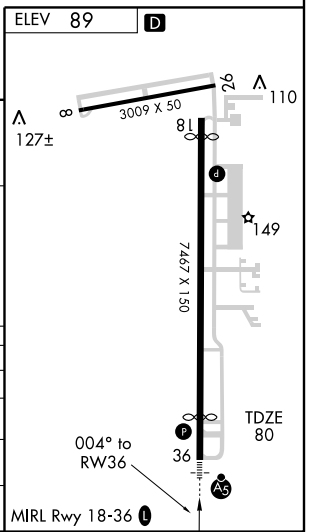


MISSED APPROACH:
Climb to 2100 direct CUFJO and hold.

AWOS-3 128.125	JACKSONVILLE APP CON 118.6 251.15	UNICOM 123.0 (CTAF)
--------------------------	---	-------------------------------



CATEGORY	A	B	C	D
LPV DA	280-3/4		200 (200-3/4)	
LNAV/VNAV DA	563-1 1/4		483 (500-1 1/4)	
LNAV MDA	540-3/4		460 (500-3/4)	
CIRCLING	580-1		580-1 1/2	
	491 (500-1)		491 (500-1 1/2)	
			540-1	
			460 (500-1)	
			640-2	
			551 (600-2)	



SE-3, 22 OCT 2009 to 19 NOV 2009

SE-3, 22 OCT 2009 to 19 NOV 2009

OCALA, FLORIDA
Amdt 1 09295

29° 10'N - 82° 13'W

OCALA INTL-JIM TAYLOR FIELD (OCF)

RNAV (GPS) RWY 36