

AKRON, COLORADO

AL-5054 (FAA)

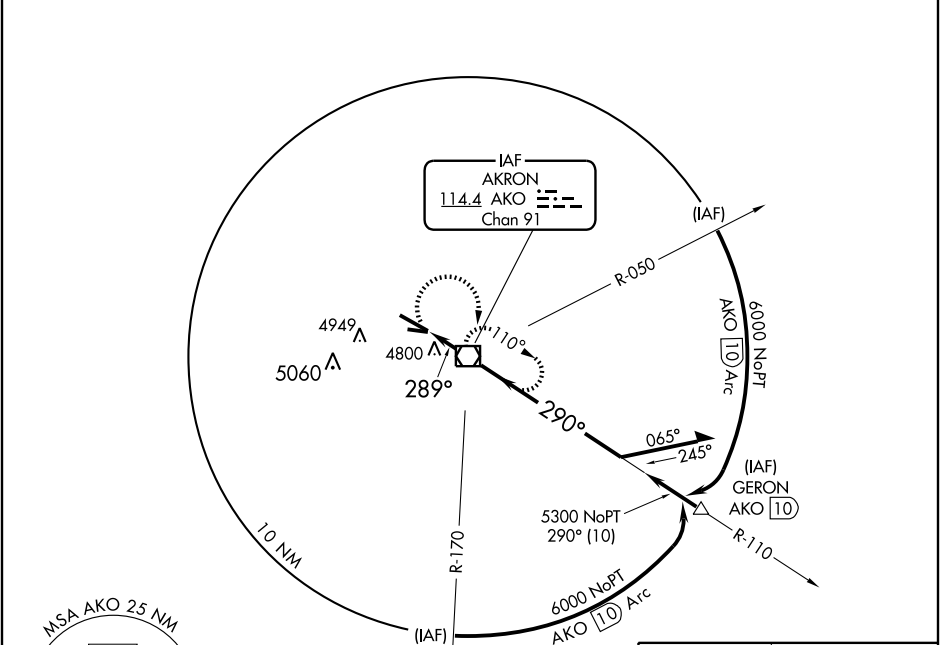
VOR/DME AKO 114.4 Chan 91	APP CRS 289°	Rwy Idg TDZE Apt Elev	7000 4681 4714
--	------------------------	-----------------------------	---

VOR RWY 29

AKRON/COLORADO PLAINS RGNL (AKO)

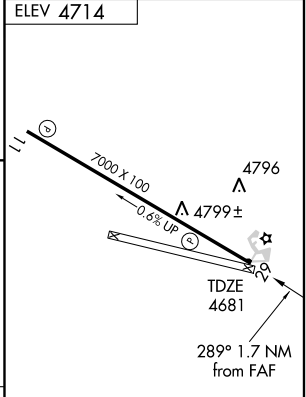
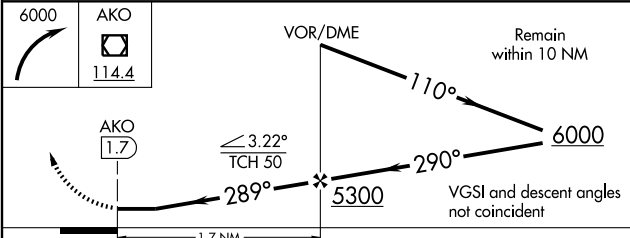
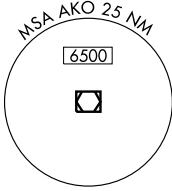
▽ MISSED APPROACH: Climbing right turn to 6000 direct AKO VOR/DME and hold.

ASOS 135.475	DENVER CENTER 133.95 317.55	UNICOM 122.8 (CTAF) ①
------------------------	---------------------------------------	---------------------------------



SW-1, 22 OCT 2009 to 19 NOV 2009

SW-1, 22 OCT 2009 to 19 NOV 2009



CATEGORY	A	B	C	D
S-29	5120-1	439 (500-1)	5120-1½ 439 (500-1½)	5120-1½ 439 (500-1½)
CIRCLING	5160-1 446 (500-1)	5180-1 466 (500-1)	5300-1½ 586 (600-1½)	5300-2 586 (600-2)

MIRL Rwy 11-29 ①
REIL Rws 11 and 29

FAF to MAP 1.7 NM					
Knots	60	90	120	150	180
Min:Sec	1:42	1:08	0:51	0:41	0:34

AKRON, COLORADO
Orig-A 09127

40° 11'N - 103° 13'W

VOR RWY 29