

AKRON, COLORADO

AL-5054 (FAA)

APP CRS 289°	Rwy Idg 7000
	TDZE 4681
	Apt Elev 4714

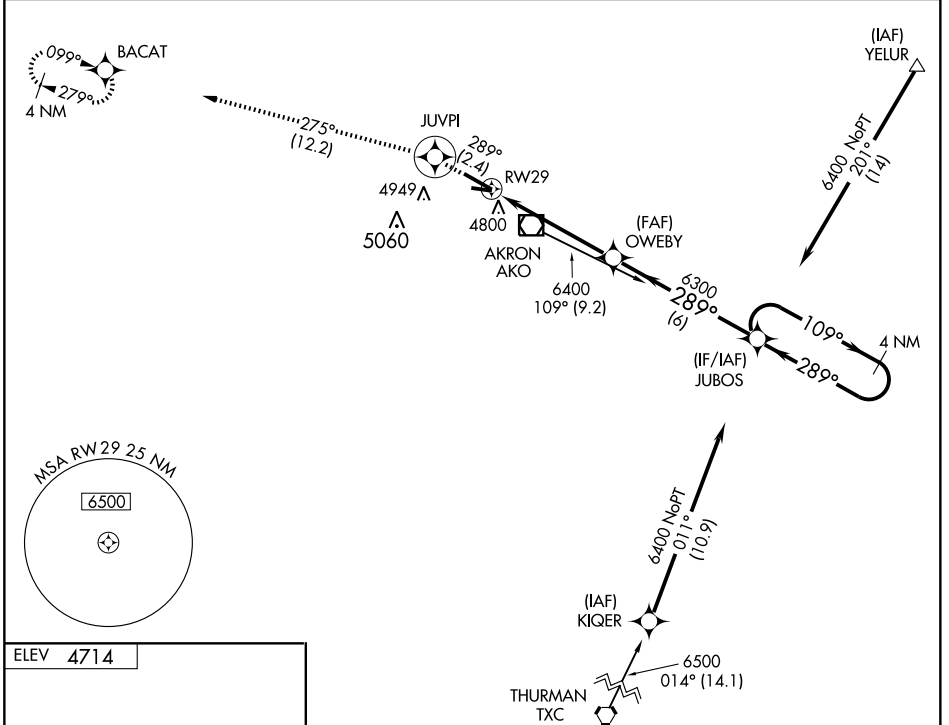
RNAV (GPS) RWY 29

AKRON/ COLORADO PLAINS RGNL (AKO)

V GPS or RNP -0.3 required. DME/DME RNP -0.3 NA. **MISSED APPROACH:** Climb to 7000, via 289° course to JUVPI WP then via 275° track to BACAT WP and hold.

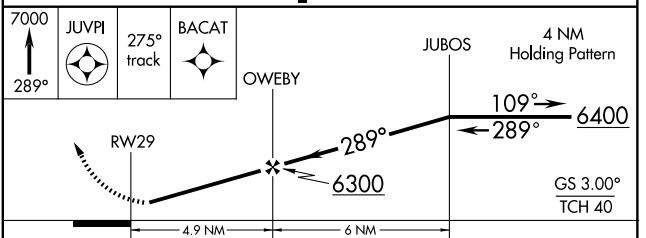
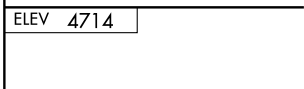
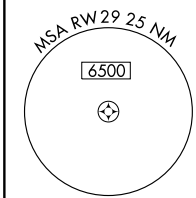
NA Baro-VNAV NA below -24°C (-11°F).

ASOS 135.475	DENVER CENTER 133.95 317.55	UNICOM 122.8 (CTAF)
------------------------	---------------------------------------	-------------------------------



SW-1, 22 OCT 2009 to 19 NOV 2009

SW-1, 22 OCT 2009 to 19 NOV 2009



CATEGORY	A	B	C	D
GLS PA DA	NA			
LNAV/VNAV DA	5100-1½ 419 (400-1½)			
LNAV MDA	5100-1 419 (400-1)		5100-1¼ 419 (400-1¼)	
CIRCLING	5180-1½ 466 (500-1½)			5280-2 566 (600-2)

MIRL Rwy 11-29
REIL Rwy 11 and 29

AKRON, COLORADO
Orig 09127

AKRON/ COLORADO PLAINS RGNL (AKO)
40° 11'N - 103° 13'W
RNAV (GPS) RWY 29