

RNAV (GPS) RWY 11

AKRON/COLORADO PLAINS RGNL (AKO)

APP CRS	Rwy Idg	7000
109°	TDZE	4714
	Apt Elev	4714

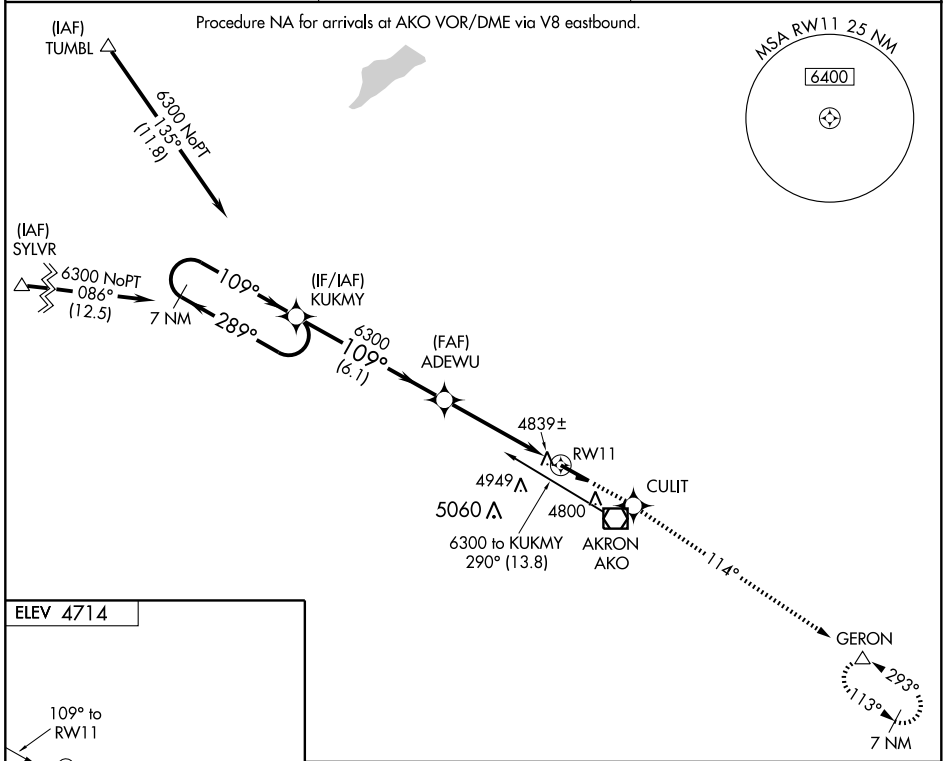
⚠ DME/DME RNP -0.3 NA. Visibility reduction by helicopters NA.
⚠ When local altimeter setting not received, use Sterling altimeter setting and increase all MDA 160 feet, increase LNAV Cat C and D visibility ½ mile and circling Cat C and D visibility ½ mile.
 VDP NA with Sterling altimeter setting. Straight-in minimums NA at night.

MISSED APPROACH: Climb to 6400 direct CULIT and via 114° track to GERON and hold.

ASOS
135.475

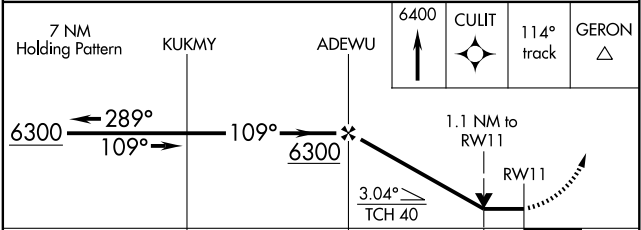
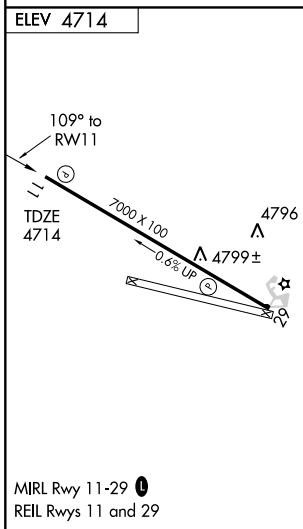
DENVER CENTER
133.95 317.55

UNICOM
122.8 (CTAF) 0



SW-1, 22 OCT 2009 to 19 NOV 2009

SW-1, 22 OCT 2009 to 19 NOV 2009



CATEGORY	A	B	C	D
LNAV MDA	5100-1 386 (400-1)			5100-1½ 386 (400-1½)
CIRCLING	5180-1 466 (500-1)		5180-1½ 466 (500-1½)	5280-2 566 (600-2)