

CROSSVILLE, TENNESSEE

AL-5051 (FAA)

WAAS CH <b>65911</b> <b>W26A</b>	APP CRS <b>256°</b>	Rwy Idg TDZE Apt Elev	<b>5418</b> <b>1871</b> <b>1881</b>
--	------------------------	-----------------------------	---

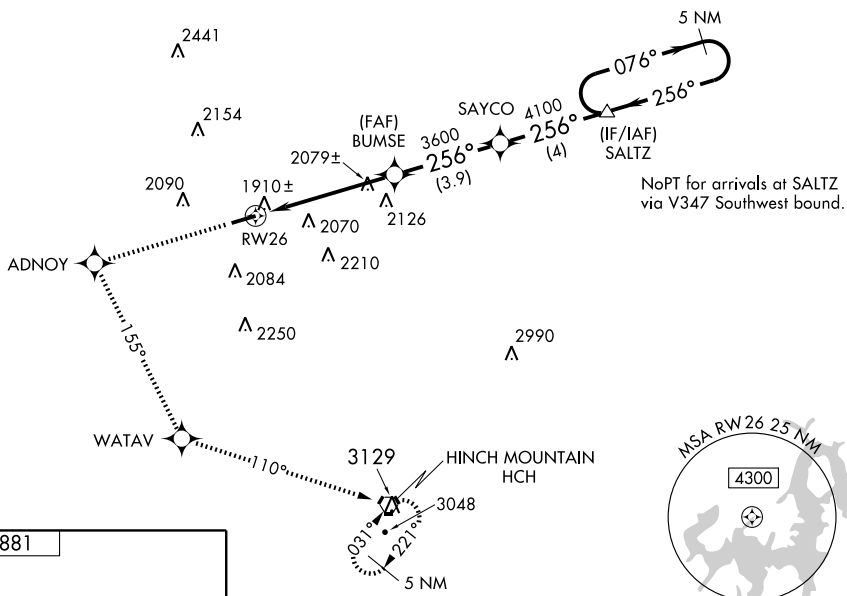
# RNAV (GPS) RWY 26

CROSSVILLE MEMORIAL-WHITSON FIELD (CSV)

For uncompensated Baro-VNAV systems, LNAV/VNAV NA below -18°C (0°F) or above 45°C (113°F). DME/DME RNP-0.3 NA.

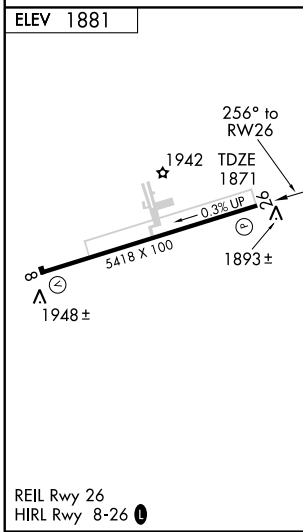
MISSED APPROACH: Climb to 5000 direct ADNOY and left turn via 155° track to WATAV and via 110° track to HCH VORTAC and hold.

ASOS <b>120.625</b>	ATLANTA CENTER <b>133.6 254.3</b>	UNICOM <b>122.7 (CTAF) 0</b>
------------------------	--------------------------------------	---------------------------------



SE-1, 22 OCT 2009 to 19 NOV 2009

SE-1, 22 OCT 2009 to 19 NOV 2009



5000	ADNOY	WATAV	TRK 155°	HCH	5 NM Holding Pattern
*LNAV only.					SALTZ
RW26		BUMSE	SAYCO	4100	4700
*1.3 NM to RW26		3600	256°	076°	GS 3.00° TCH 60
1.3 NM		3.9 NM	3.9 NM	4 NM	VGSI and RNAV glidepath not coincident.
CATEGORY	A	B	C	D	
LPV DA	2071-3/4 200 (200-3/4)				
LNAV/VNAV DA	2170-1 299 (300-1)				
LNAV MDA	2340-1	469 (500-1)	2340-1 1/4 469 (500-1 1/4)	2340-1 1/2 469 (500-1 1/2)	
CIRCLING	2340-1	459 (500-1)	2340-1 1/2 459 (500-1 1/2)	2440-2 559 (600-2)	

CROSSVILLE, TENNESSEE  
Orig 09071

# RNAV (GPS) RWY 26

35° 57' N-85° 05' W