

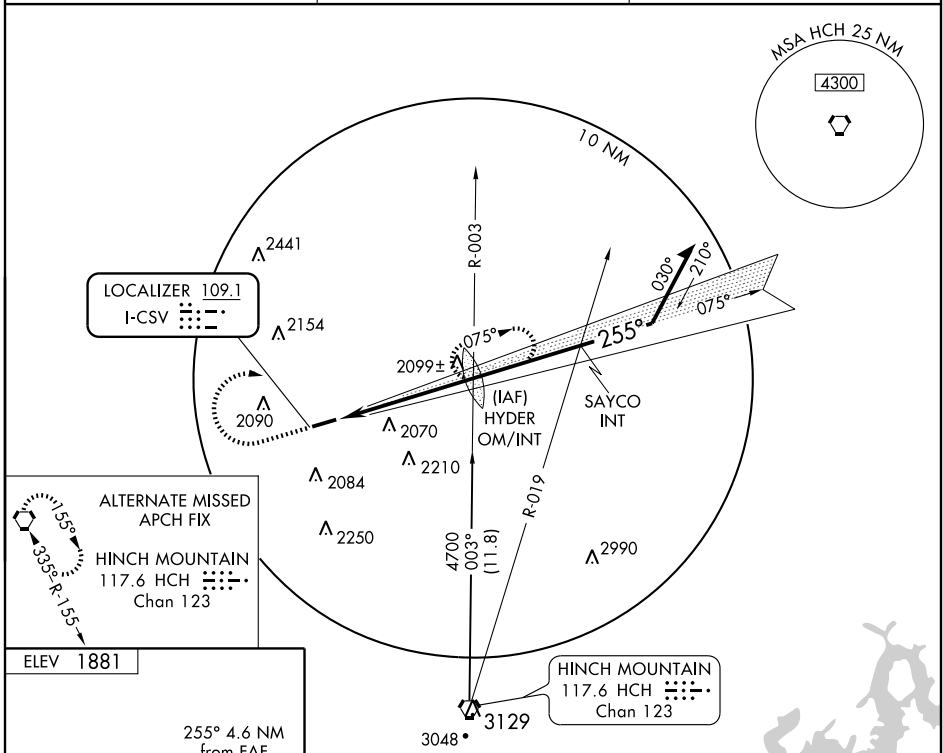
# ILS or LOC RWY 26

CROSSVILLE MEMORIAL-WHITSON FIELD (CSV)

LOC I-CSV <b>109.1</b>	APP CRS <b>255°</b>	Rwy Idg TDZE Apt Elev	<b>5418</b> <b>1871</b> <b>1881</b>
---------------------------	------------------------	-----------------------------	---

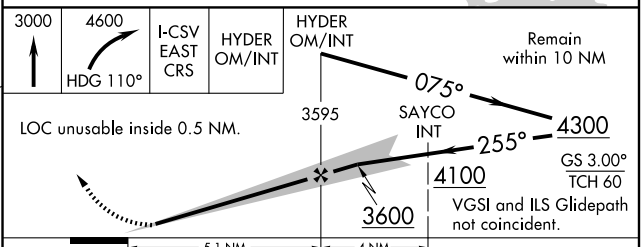
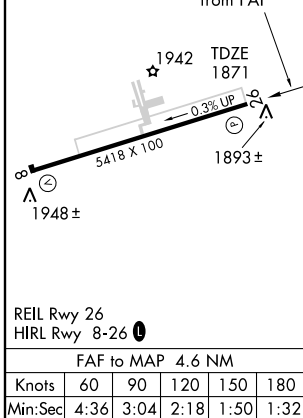
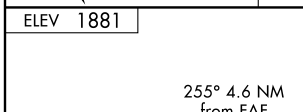
MISSED APPROACH: Climb to 3000 then climbing right turn to 4600 via heading 110° and I-CSV East course to HYDER OM/INT and hold.

ASOS <b>120.625</b>	ATLANTA CENTER <b>133.6 254.3</b>	UNICOM <b>122.7 (CTAF)</b>
------------------------	--------------------------------------	-------------------------------



SE-1, 22 OCT 2009 to 19 NOV 2009

SE-1, 22 OCT 2009 to 19 NOV 2009



	5.1 NM		4 NM	
CATEGORY	A	B	C	D
S-ILS 26	2090- <sup>3</sup> / <sub>4</sub> 219 (300- <sup>3</sup> / <sub>4</sub> )			
S-LOC 26	2360-1	489 (500-1)	2360-1 <sup>1</sup> / <sub>4</sub> 489 (500-1 <sup>1</sup> / <sub>4</sub> )	2360-1 <sup>1</sup> / <sub>2</sub> 489 (500-1 <sup>1</sup> / <sub>2</sub> )
CIRCLING	2360-1	479 (500-1)	2360-1 <sup>1</sup> / <sub>2</sub> 479 (500-1 <sup>1</sup> / <sub>2</sub> )	2440-2 559 (600-2)

# ILS or LOC RWY 26