

STEVENS POINT, WISCONSIN

AL-5050 (FAA)

|  |                        |   |
|--|------------------------|---|
| VORTAC STE<br><b>110.6</b><br>Chan <b>43</b> | APP CRS<br><b>292°</b> | Rwy ldg<br>TDZE <b>1107</b><br>Apt Elev <b>1110</b> |
|--|------------------------|---|

# VOR or GPS RWY 30

STEVENS POINT MUNI (STE)

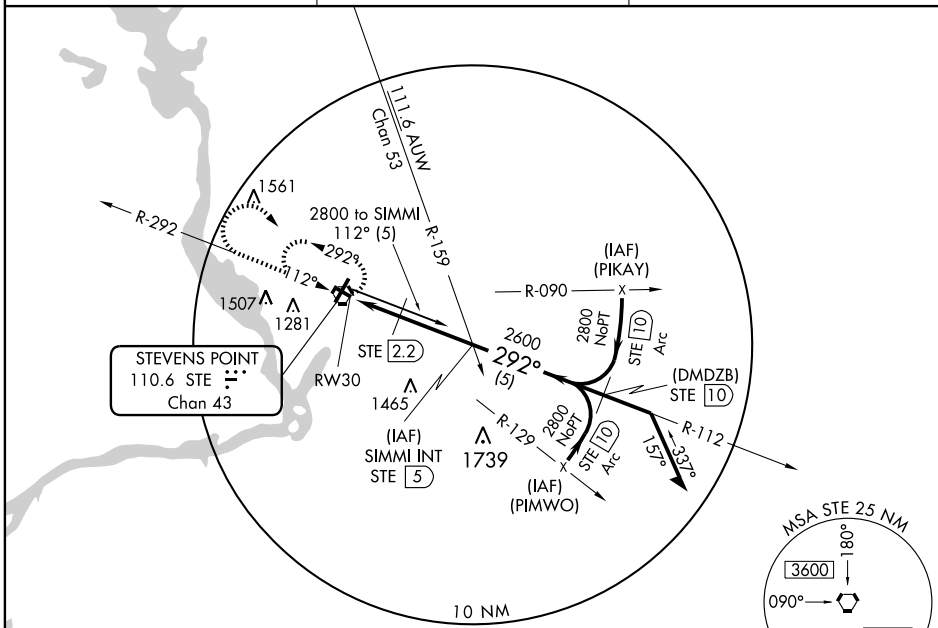


MISSED APPROACH: Climb to 2800, then right turn direct STE VORTAC and hold.

AWOS-3  
**119.275**

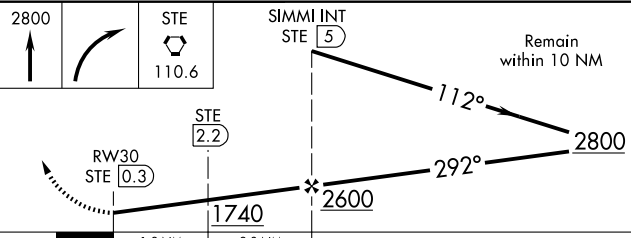
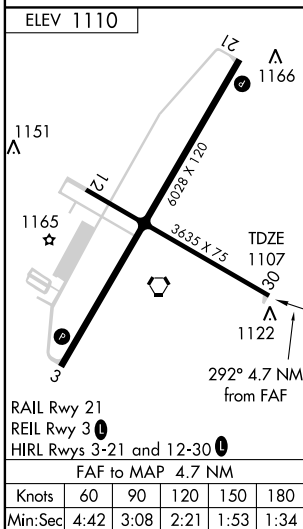
MINNEAPOLIS CENTER  
**124.4 317.7**

UNICOM  
**122.7 (CTAF) 0**



EC-3, 22 OCT 2009 to 19 NOV 2009

EC-3, 22 OCT 2009 to 19 NOV 2009



| CATEGORY     | A                  | B           | C  | D  |
|--------------|--------------------|-------------|--|--|
| S-30         | 1740-1             | 633 (700-1) | 1740-1 <sup>3</sup> / <sub>4</sub><br>633 (700-1 <sup>3</sup> / <sub>4</sub> ) | 1740-2<br>633 (700-2)  |
| CIRCLING     | 1740-1             | 630 (700-1) | 1740-1 <sup>3</sup> / <sub>4</sub><br>630 (700-1 <sup>3</sup> / <sub>4</sub> ) | 1800-2 <sup>1</sup> / <sub>4</sub><br>690 (700-2 <sup>1</sup> / <sub>4</sub> ) |
| DME MINIMUMS |                    |             |  |  |
| S-30         | 1480-1 373 (400-1) |             | 1480-1 <sup>1</sup> / <sub>4</sub><br>373 (400-1 <sup>1</sup> / <sub>4</sub> ) |  |
| CIRCLING     | 1580-1             | 470 (500-1) | 1660-1 <sup>1</sup> / <sub>2</sub><br>550 (600-1 <sup>1</sup> / <sub>2</sub> ) | 1800-2 <sup>1</sup> / <sub>4</sub><br>690 (700-2 <sup>1</sup> / <sub>4</sub> ) |

STEVENS POINT, WISCONSIN  
Amdt 17A 09295

44°33'N - 89°32'W

# STEVENS POINT MUNI (STE) VOR or GPS RWY 30