

VORTAC STE <b>110.6</b> Chan <b>43</b>	APP CRS <b>038°</b>	Rwy Idg TDZE <b>1108</b> Apt Elev <b>1110</b>	<b>6028</b>
--	------------------------	---	-------------

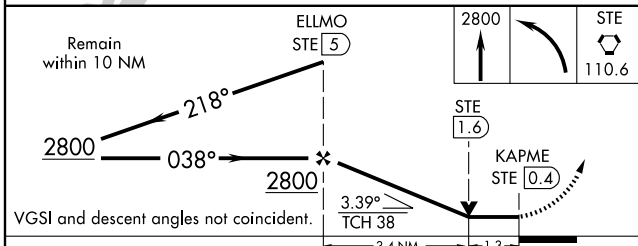
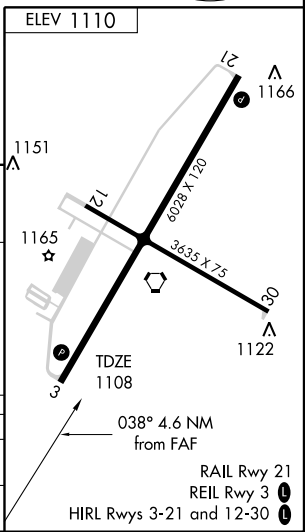
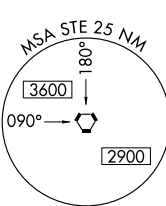
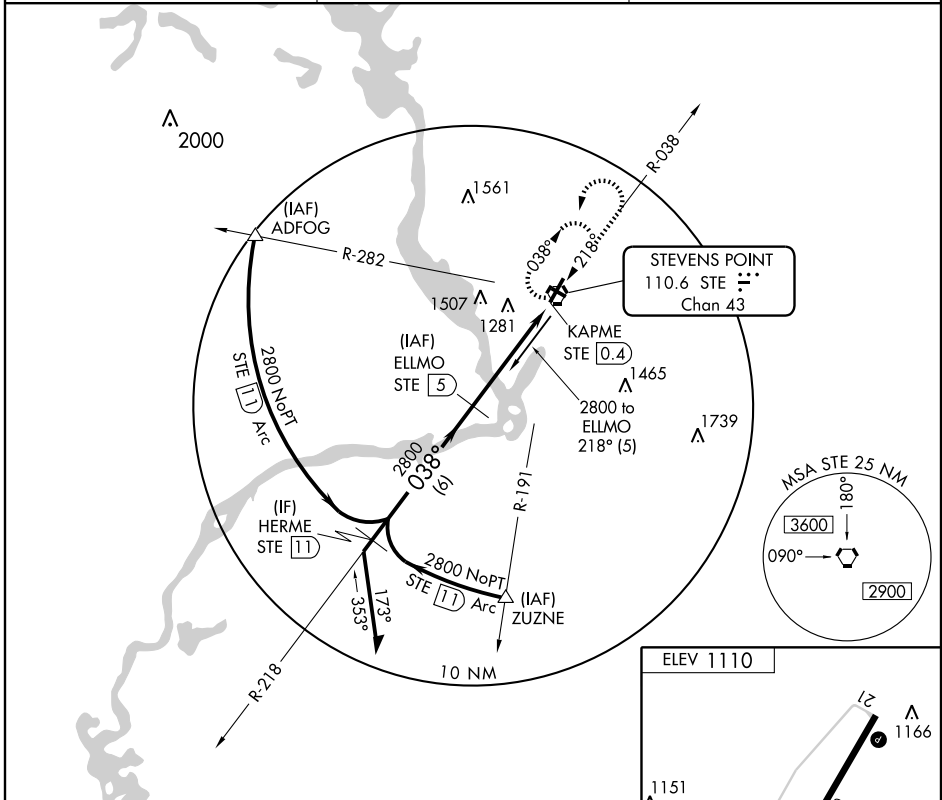
# VOR/DME RWY 3

STEVENS POINT MUNI (STE)

**⚠** Visibility reduction by helicopters NA. When local altimeter setting not received, use Mosinee altimeter setting and increase all MDA 60 feet and increase Circling Cat. C and D visibility ¼ mile. VDP NA when using Mosinee altimeter setting.

**⚠** MISSED APPROACH: Climb to 2800, then left turn direct STE VORTAC and hold.

AWOS-3 <b>119.275</b>	MINNEAPOLIS CENTER <b>124.4 317.7</b>	UNICOM <b>122.7 (CTAF)</b> <b>⓪</b>
--------------------------	--	--



CATEGORY	A	B	C	D
S-3	1540-1	432 (500-1)	1540-1½ 432 (500-1½)	1540-1½ 432 (500-1½)
CIRCLING	1580-1	470 (500-1)	1660-1½ 550 (600-1½)	1800-2¼ 690 (700-2¼)

EC-3, 22 OCT 2009 to 19 NOV 2009

EC-3, 22 OCT 2009 to 19 NOV 2009