

VORTAC STE	APP CRS	Rwy Idg	6028
110.6	205°	TDZE	1110
Chan 43		Apt Elev	1110

VOR/DME RWY 21

STEVENS POINT MUNI (STE)

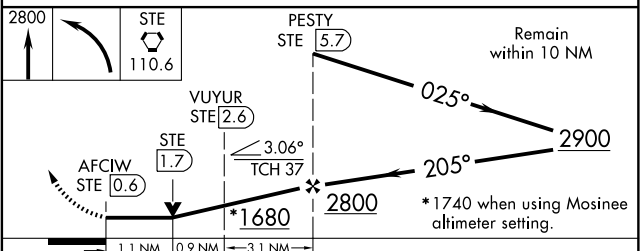
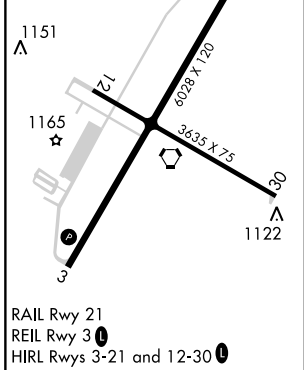
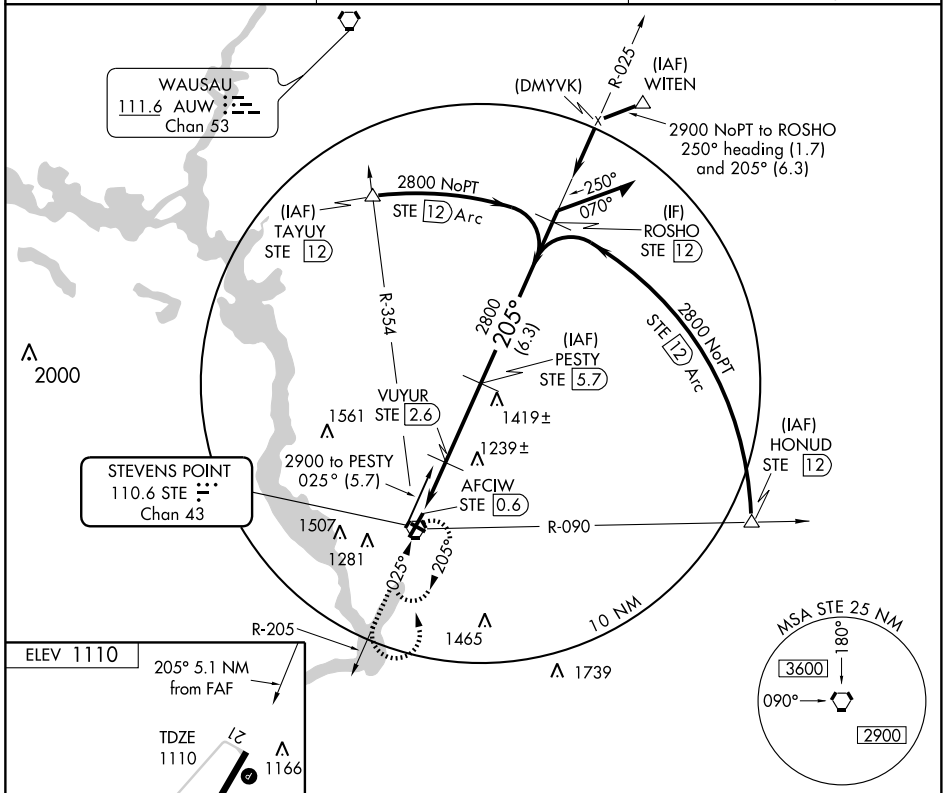
When local altimeter setting not received, use Mosinee altimeter setting and increase all MDA 60 feet and increase S-21 Cat. C visibility ½ mile, Cat. D visibility ¼ mile and Circling Cat. C and D visibility ¼ mile. Inoperative table does not apply to Cat. C when using Mosinee altimeter setting. VDP NA when using Mosinee altimeter setting.

MISSED APPROACH:
Climb to 2800 then left turn direct STE VORTAC and hold.

AWOS-3
119.275

MINNEAPOLIS CENTER
124.4 317.7

UNICOM
122.7 (CTAF)



CATEGORY	A	B	C	D
S-21	1500-¾ 390 (400-¾)			1500-1¼ 390 (400-1¼)
CIRCLING	1580-1	470 (500-1)	1660-1½ 550 (600-1½)	1800-2¼ 690 (700-2¼)

EC-3, 22 OCT 2009 to 19 NOV 2009

EC-3, 22 OCT 2009 to 19 NOV 2009