

RNAV (GPS) RWY 21

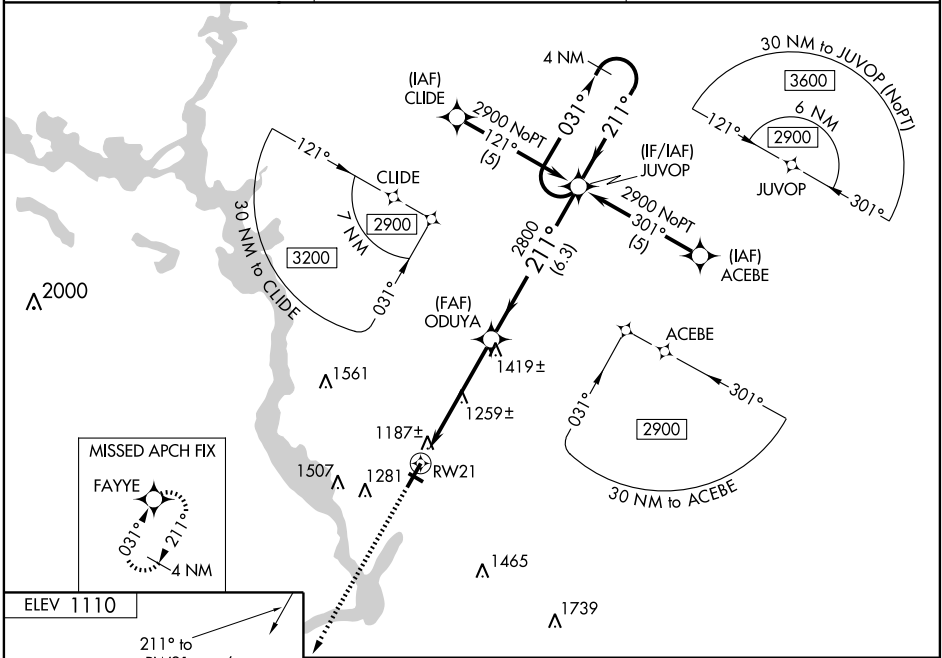
STEVENS POINT MUNI (STE)

WAAS CH 86511 W21A	APP CRS 211°	Rwy Idg 6028 TDZE 1110 Apt Elev 1110
--	------------------------	---

▼ For uncompensated Baro-VNAV systems, LNAV/VNAV NA below -17°C (2°F) or above 46°C (114°F). DME/DME RNP-0.3 NA. When local altimeter setting not received, use
 ▲ Mosinee altimeter setting and increase LPV DA to 1369, LNAV/VNAV DA to 1516, all MDA 60 feet, and increase LPV and LNAV/VNAV visibility all Cats. ¼ mile, increase LNAV Cat. D visibility ½ mile and Circling Cat. C and D visibility ½ mile. VDP and Baro-VNAV NA when using Mosinee altimeter setting. Inoperative table does not apply to LNAV/VNAV all Cats. and LNAV Cat. C.

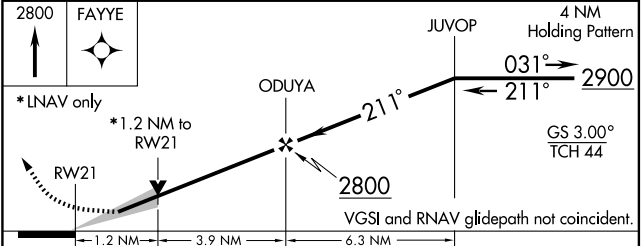
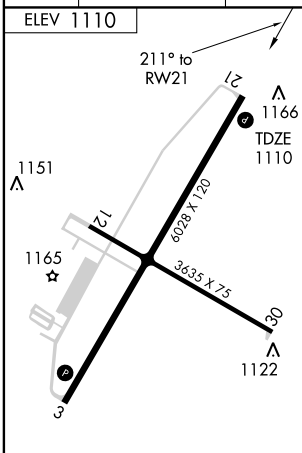
MISSED APPROACH:
Climb to 2800 direct FAYYE and hold.

AWOS-3 119.275	MINNEAPOLIS CENTER 124.4 317.7	UNICOM 122.7 (CTAF) 0
--------------------------	--	---------------------------------



EC-3, 22 OCT 2009 to 19 NOV 2009

EC-3, 22 OCT 2009 to 19 NOV 2009



CATEGORY	A	B	C	D
LPV DA		1310-3/4	200 (200-3/4)	
LNAV/VNAV DA		1457-1 1/4	347 (400-1 1/4)	
LNAV MDA	1520-3/4	410 (500-3/4)	1520-1 1/4	410 (500-1 1/4)
CIRCLING	1580-1	470 (500-1)	1660-1 1/2	1800-2 1/4
			550 (600-1 1/2)	690 (700-2 1/4)

RAIL Rwy 21
REIL Rwy 3
HIRL Rwy 3-21 and 12-30