

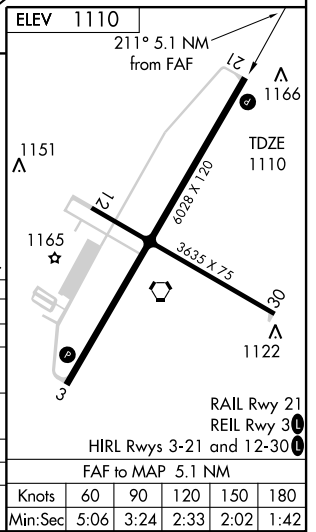
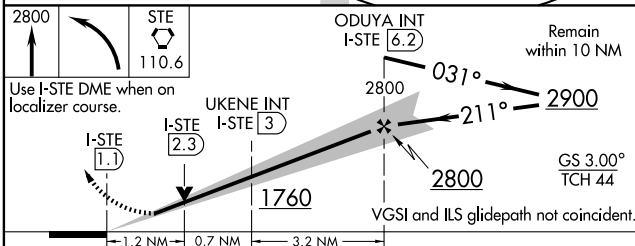
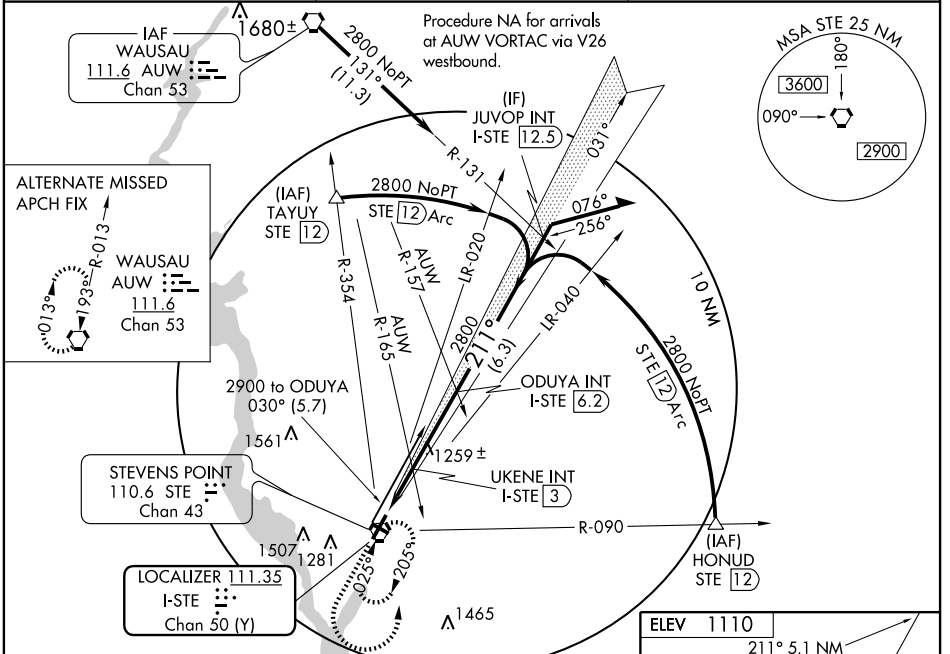
LOC/DME I-STE	APP CRS	Rwy Ldg	<b>6028</b>
<b>111.35</b>	<b>211°</b>	TDZE	<b>1110</b>
Chan <b>50(Y)</b>		Apt Elev	<b>1110</b>

# ILS or LOC RWY 21

STEVENS POINT MUNI (STE)

Inoperative table does not apply to S-LOC 21 Cat C.  
 When local altimeter setting not received, use Mosinee altimeter setting and increase all DA and all UKENE FIX minimums MDA 60 feet, increase S-ILS 21 all Cats visibility ¼ mile. UKENE FIX minimums: increase S-LOC 21 Cat D and Circling Cats C and D visibility ¼ mile. VDP NA when using Mosinee altimeter setting.

**MISSED APPROACH:** Climb to 2800 then left turn direct STE VORTAC and hold.



CATEGORY	A	B	C	D
S-ILS 21	1310- <sup>3</sup> / <sub>4</sub> 200 (200- <sup>3</sup> / <sub>4</sub> )			
S-LOC 21	1760- <sup>3</sup> / <sub>4</sub> 650 (700- <sup>3</sup> / <sub>4</sub> )		1760-1 <sup>3</sup> / <sub>4</sub> 650 (700-1 <sup>3</sup> / <sub>4</sub> )	1760-2 650 (700-2)
CIRCLING	1760-1 650 (700-1)		1760-1 <sup>3</sup> / <sub>4</sub> 650 (700-1 <sup>3</sup> / <sub>4</sub> )	1800-2 <sup>1</sup> / <sub>4</sub> 690 (700-2 <sup>1</sup> / <sub>4</sub> )
UKENE FIX MINIMUMS				
S-LOC 21	1520- <sup>3</sup> / <sub>4</sub> 410 (500- <sup>3</sup> / <sub>4</sub> )		1520-1 <sup>1</sup> / <sub>4</sub> 410 (500-1 <sup>1</sup> / <sub>4</sub> )	
CIRCLING	1580-1 470 (500-1)		1660-1 <sup>1</sup> / <sub>2</sub> 550 (600-1 <sup>1</sup> / <sub>2</sub> )	1800-2 <sup>1</sup> / <sub>4</sub> 690 (700-2 <sup>1</sup> / <sub>4</sub> )

EC-3, 22 OCT 2009 to 19 NOV 2009

EC-3, 22 OCT 2009 to 19 NOV 2009

Knots	60	90	120	150	180
	Min:Sec	5:06	3:24	2:33	2:02