

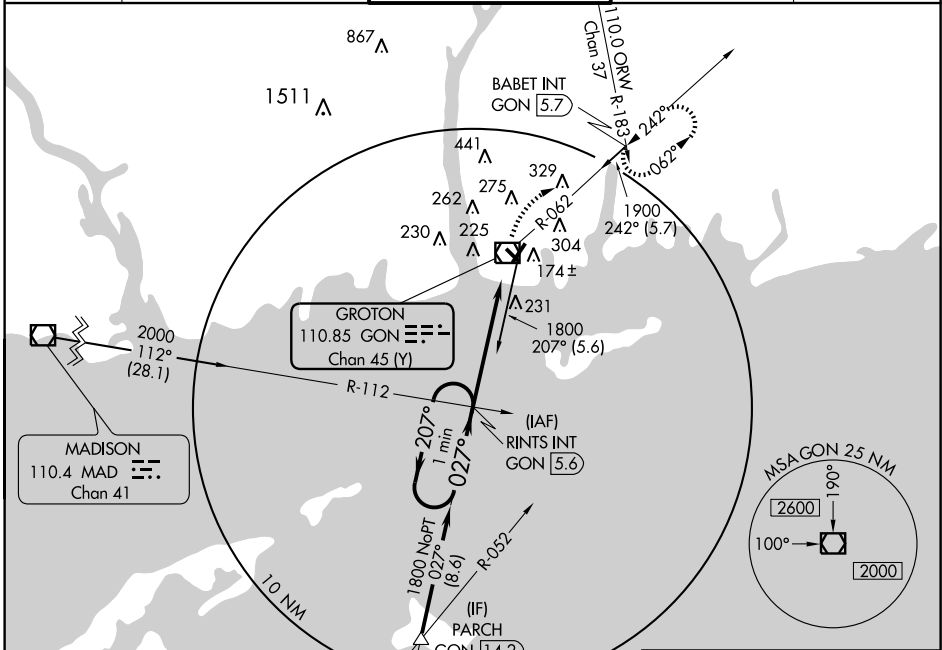
VOR/DME GON <b>110.85</b> Chan <b>45 (Y)</b>	APP CRS <b>027°</b>	Rwy Idg TDZE Apt Elev <b>5000</b> <b>7</b> <b>9</b>
--	------------------------	--

# VOR RWY 5

GROTON-NEW LONDON (GON)

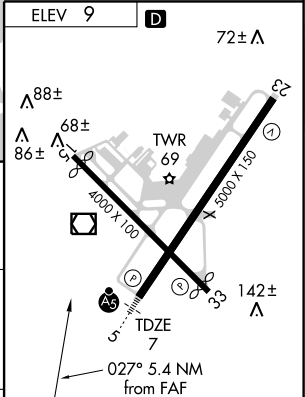
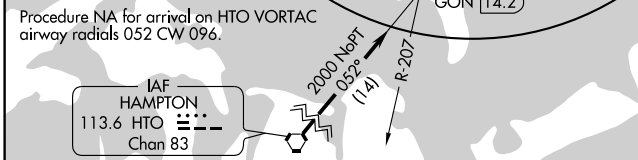
<b>▼</b> Inoperative table does not apply to Cat D.	MALSR 	MISSED APPROACH: Climbing right turn to 2000 via GON R-062 to BABET Int/GON 5.7 DME and hold, continue climb-in-hold to 2000.
---	-----------	---

ATIS <b>127.0</b>	PROVIDENCE APP CON * <b>125.75 319.2</b>	GROTON TOWER * <b>125.6 (CTAF) 0 352.8</b>	GND CON <b>121.65 352.8</b>	CLNC DEL * <b>119.85</b>
----------------------	---	---	--------------------------------	-----------------------------



NE-1, 22 OCT 2009 to 19 NOV 2009

NE-1, 22 OCT 2009 to 19 NOV 2009



CATEGORY	A	B	C	D
S-5	500/24	493 (500-1/2)	500/40 493 (500-3/4)	500-1 1/2 493 (500-1 1/2)
CIRCLING	560-1 551 (600-1)	620-1 611 (700-1)	620-1 1/4 611 (700-1 3/4)	620-2 611 (700-2)

FAF to MAP 5.4 NM					
Knots	60	90	120	150	180
Min:Sec	5:24	3:36	2:42	2:10	1:48