

# ILS RWY 27 (CAT II)

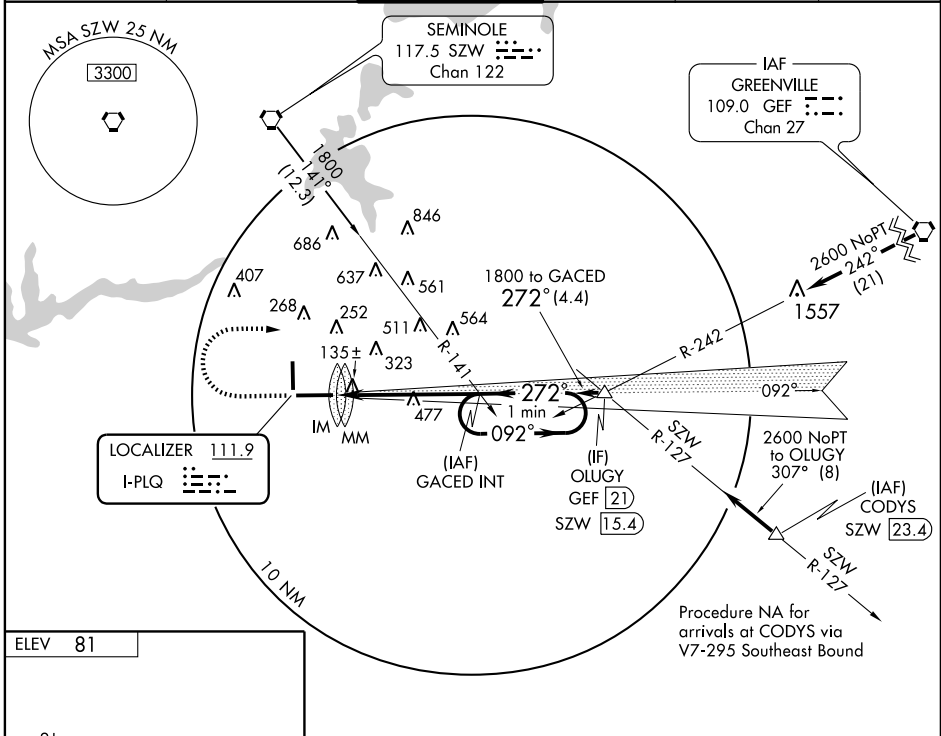
TALLAHASSEE RGNL (TLH)

LOC I-PLQ <b>111.9</b>	APP CRS <b>272°</b>	Rwy Idg <b>8000</b>
		TDZE <b>53</b>
		Apt Elev <b>81</b>

▼ S-ILS 27 not authorized when control tower closed.  
▲ S-ILS 27 not authorized when using Bainbridge, GA ASR altimeter setting.

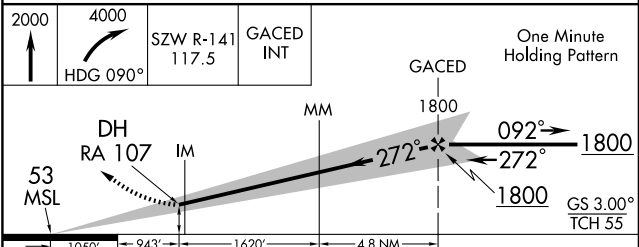
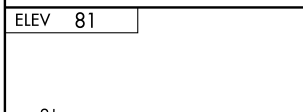
ALSIF-2 MISSED APPROACH: Climb to 2000 then climbing right turn to 4000 via heading 090° and SZW R-141 to GACED Int and hold, continue climb-in-hold to 4000.

ATIS <b>119.45 239.25</b>	TALLAHASSEE APP CON* <b>135.8 317.4</b>	TALLAHASSEE TOWER* <b>118.7(CTAF) 0 257.8</b>	GND CON <b>121.9 348.6</b>	CLNC DEL <b>126.65 275.8</b>	UNICOM <b>122.95</b>
------------------------------	--	--	-------------------------------	---------------------------------	-------------------------



SE-3, 22 OCT 2009 to 19 NOV 2009

SE-3, 22 OCT 2009 to 19 NOV 2009



CATEGORY	A	B	C	D
S-ILS 27		153/12	100 RA 107	

**CATEGORY II ILS - SPECIAL AIRCREW & AIRCRAFT CERTIFICATION REQUIRED**