

NILES, MICHIGAN

AL-5046 (FAA)

VORTAC GIJ <b>115.4</b> Chan 101	APP CRS <b>225°</b>	Rwy ldg <b>2565</b> TDZE <b>743</b> Apt Elev <b>750</b>
--	------------------------	---

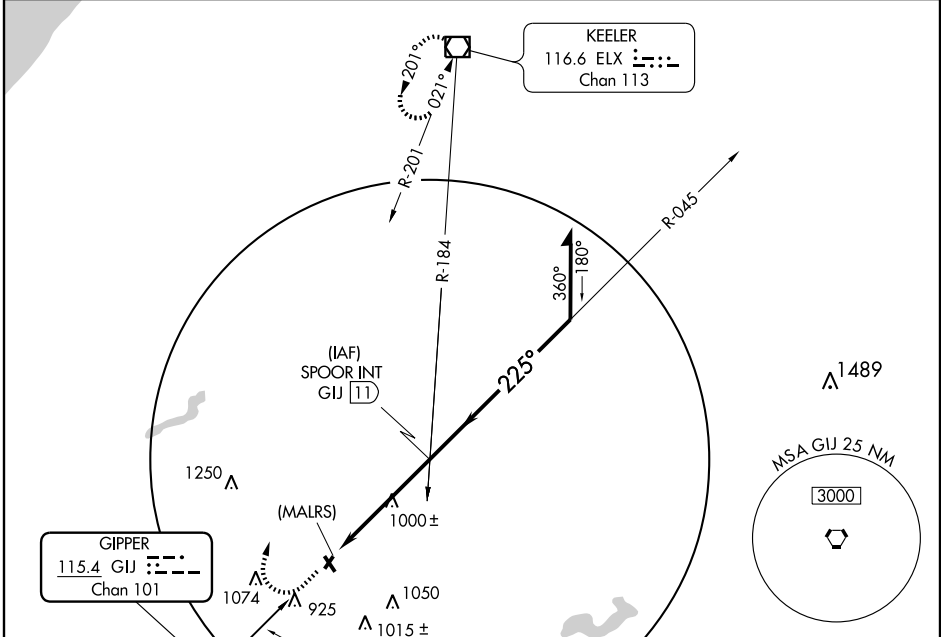
# VOR or GPS RWY 21

NILES / JERRY TYLER MEMORIAL (3TR)

**▼** Use South Bend altimeter setting.  
**▲ NA** Straight-in minimums not authorized at night.

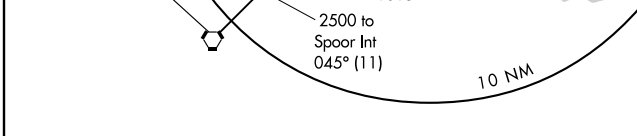
MISSED APPROACH: Climb to 1300, then climbing right turn to 2500 direct ELX VOR/DME and hold.

SOUTH BEND APP CON ★ <b>118.55 257.8</b>	GCO <b>121.725</b>	UNICOM <b>122.8 (CTAF) 0</b>
---	-----------------------	---------------------------------

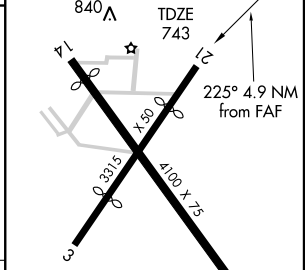
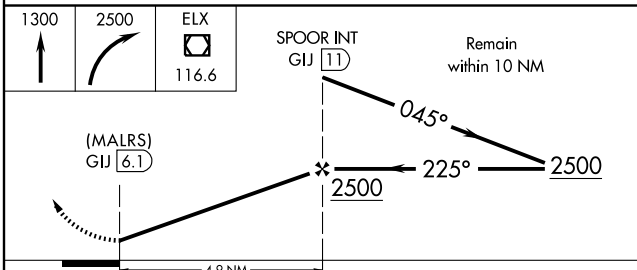


EC-1, 22 OCT 2009 to 19 NOV 2009

EC-1, 22 OCT 2009 to 19 NOV 2009



ELEV 750	Rwy 3 ldg 2415'
	Rwy 14 ldg 3800'
	Rwy 21 ldg 2565'
	799± ▲



CATEGORY	A	B	C	D
S-21	1280-1 537 (600-1)		1280-1½ 537 (600-1½)	1280-1¾ 537 (600-1¾)
CIRCLING	1300-1 557 (600-1)		1300-1½ 557 (600-1½)	1460-2¼ 717 (800-2¼)

MIRL Rwy 14-32 0				
REIL Rws 14 and 32 0				
FAF to MAP 4.9 NM				
Knots	60	90	120	150 180
Min:Sec	4:54	3:16	2:27	1:58 1:38

NILES, MICHIGAN  
Amdt 3A 06159

41°50'N - 86°14'W

# NILES / JERRY TYLER MEMORIAL (3TR)

## VOR or GPS RWY 21