

ROBBINSVILLE, NEW JERSEY

AL-5045 (FAA)

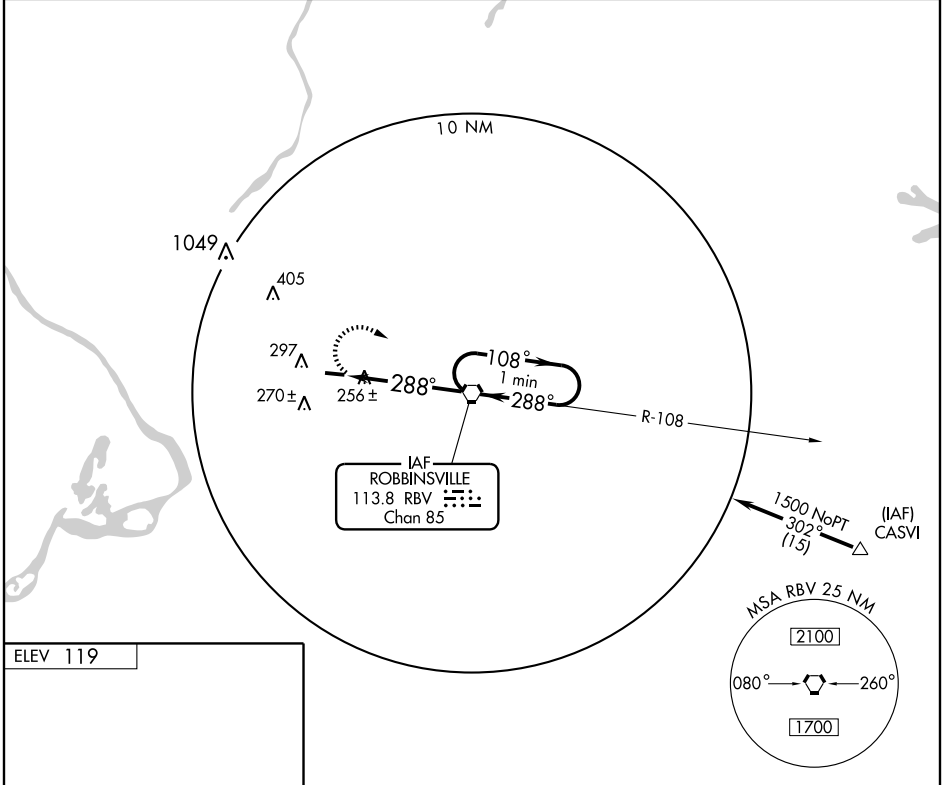
VORTAC RBV 113.8 Chan 85	APP CRS 288°	Rwy Idg 3975 TDZE 119 Apt Elev 119
--	------------------------	---

VOR RWY 29

ROBBINSVILLE/ TRENTON-ROBBINSVILLE (N87)

 <p>Use McGuire AFB altimeter setting.</p>	<p>MISSED APPROACH: Climbing right turn to 1700 direct RBV VORTAC and hold.</p>
--	---

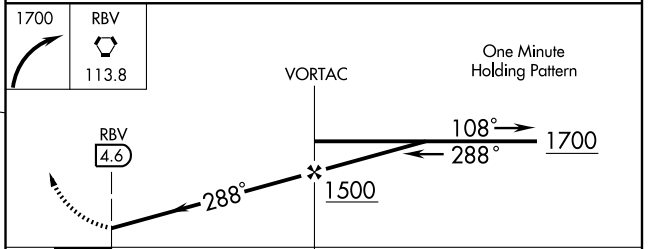
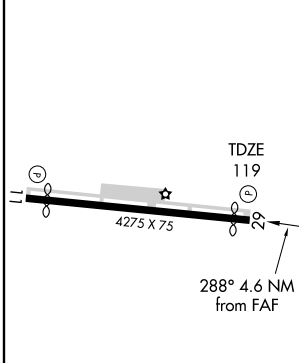
<p>McGUIRE APP CON 124.15 363.8</p>	<p>UNICOM 123.0 (CTAF)</p>	<p>123.3 </p>
--	---------------------------------------	---




NE-2, 22 OCT 2009 to 19 NOV 2009

NE-2, 22 OCT 2009 to 19 NOV 2009

ELEV 119



MIRL Rwy 11-29 

FAF to MAP 4.6 NM

Knots	60	90	120	150	180
Min:Sec	4:36	3:04	2:18	1:50	1:32

CATEGORY	A	B	C	D
S-29	800-1	681 (700-1)	800-2 681 (700-2)	800-2 1/4 681 (700-2 1/4)
CIRCLING	800-1	681 (700-1)	800-2 681 (700-2)	800-2 1/4 681 (700-2 1/4)

ROBBINSVILLE, NEW JERSEY
Amdt 10B 09183

ROBBINSVILLE/ TRENTON-ROBBINSVILLE (N87)

40°13'N-74°36'W

VOR RWY 29