

VOR or GPS RWY 23

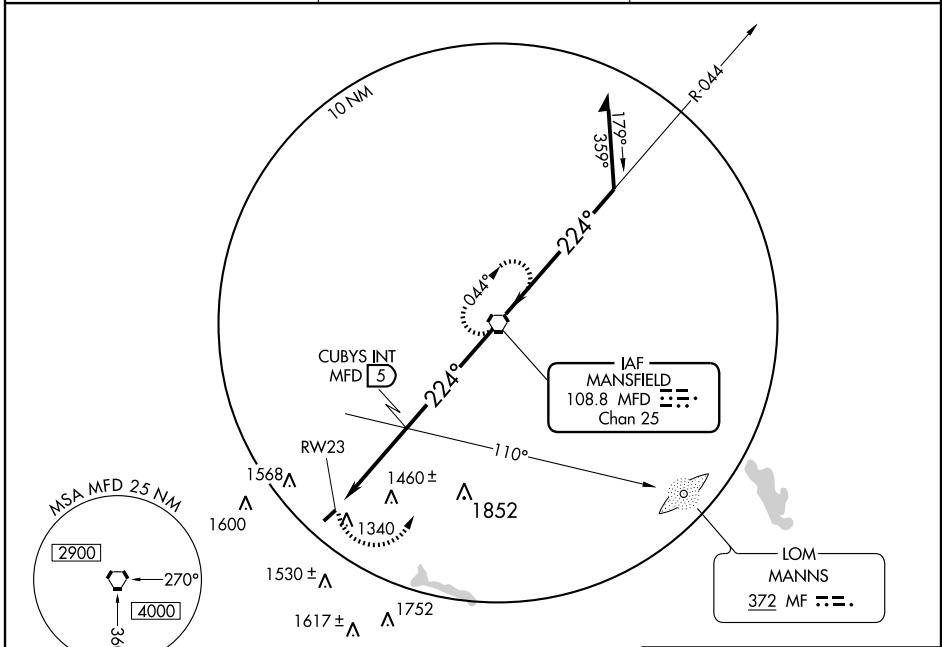
GALLION MUNI (GQQ)

VORTAC MFD 108.8 Chan 25	APP CRS 224°	Rwy Idg TDZE Apt Elev	3505 1225 1225
--	------------------------	-----------------------------	---

▲ NA Use Mansfield altimeter setting: when not received, use Port Columbus Intl altimeter setting and increase all MDAs 140 feet and all visibilities ½ mile.

MISSED APPROACH: Climbing left turn to 2900 direct MFD VORTAC and hold.

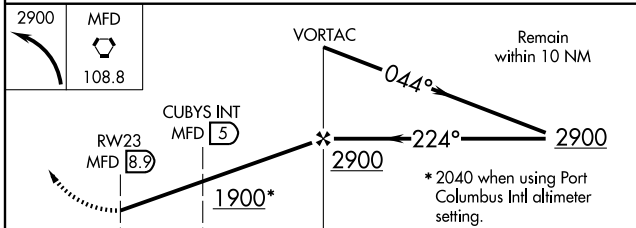
MANSFIELD APP CON ★ 124.2 390.8	CLNC DEL 126.8	UNICOM 122.8 (CTAF) 0
--	---------------------------------	--



EC-2, 22 OCT 2009 to 19 NOV 2009

EC-2, 22 OCT 2009 to 19 NOV 2009

ELEV 1225	Rwy 5 Idg 3317'
-----------	-----------------



CATEGORY	A	B	C	D
S-23	1900-1	675 (700-1)	1900-2 675 (700-2)	NA
CIRCLING	1900-1	675 (700-1)	1900-2 675 (700-2)	NA
CUBYS FIX MINIMUMS				
S-23	1760-1	535 (600-1)	1760-1½ 535 (600-1½)	NA
CIRCLING	1800-1	575 (600-1)	1800-1½ 575 (600-1½)	NA

