

DAYTON, OHIO

AL-5042 (FAA)

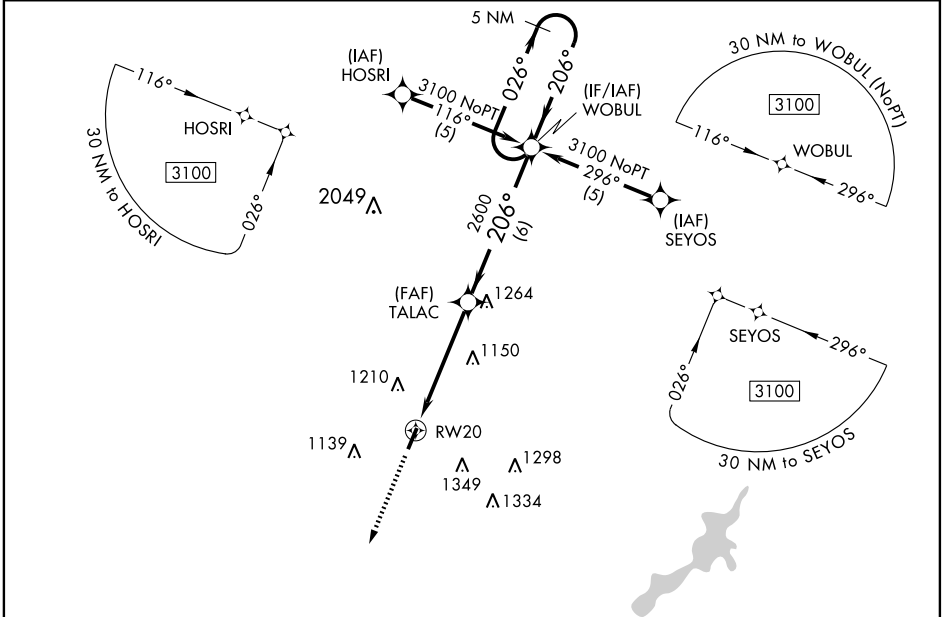
WAAS CH 93601 W20A	APP CRS 206°	Rwy Idg TDZE 955 Apt Elev 957	4410 955 957
--	------------------------	---	---

RNAV (GPS) RWY 20

DAYTON-WRIGHT BROTHERS (MGY)

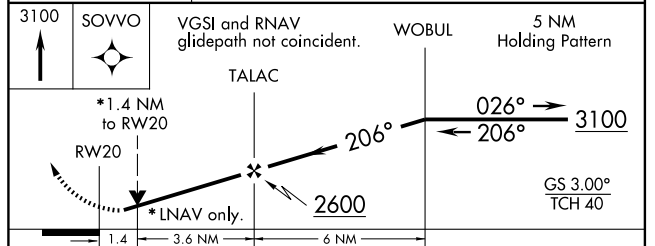
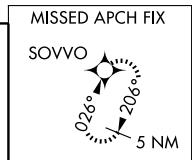
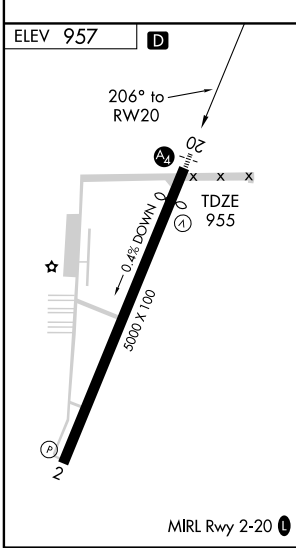
<p>▼ DME/DME RNP-0.3 NA. Inoperative table does not apply. If local altimeter setting not received, use James M Cox Dayton Intl and increase all DAs/MDAs 60 feet. Visibility reduction for helicopters NA. VDP NA when using James M Cox Dayton Intl altimeter setting.</p>	<p>MALS </p>	<p>MISSED APPROACH: Climb to 3100 direct SOVVO and hold.</p>
---	--------------	--

ASOS 118.375	DAYTON APP CON 118.85 127.225 327.1	CLNC DEL 119.4	UNICOM 122.8 (CTAF) 0
------------------------	---	--------------------------	---------------------------------



EC-2, 22 OCT 2009 to 19 NOV 2009

EC-2, 22 OCT 2009 to 19 NOV 2009



CATEGORY	A	B	C	D
LPV DA	1294-1 1/4 339 (400-1 1/4)			
LNAV MDA	1440-1	485 (500-1)	1440-1 1/2 485 (500-1 1/2)	1440-1 1/2 485 (500-1 1/2)
CIRCLING	1480-1 1/4	523 (600-1 1/4)	1520-1 1/2 563 (600-1 1/2)	1660-2 1/4 703 (800-2 1/4)

DAYTON, OHIO
Orig 09183

39°35'N - 84°13'W

DAYTON-WRIGHT BROTHERS (MGY)

RNAV (GPS) RWY 20