

RNAV (GPS) RWY 2

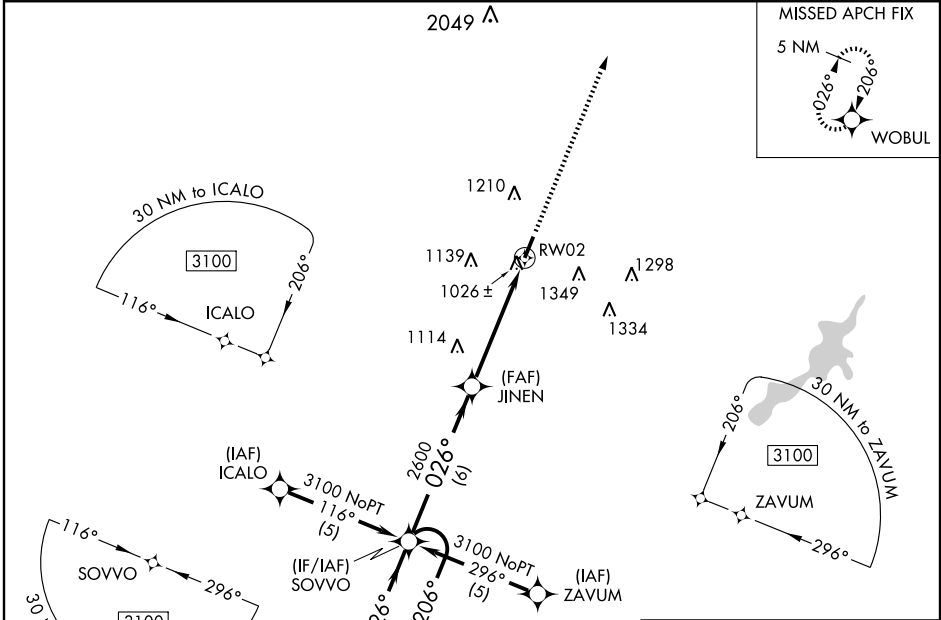
DAYTON-WRIGHT BROTHERS (MGY)

WAAS CH 45801 W02A	APP CRS 026°	Rwy Idg TDZE Apt Elev	5000 949 957
----------------------------------------	------------------------	-----------------------------	-----------------------------------------

Baro-VNAV NA when using James M Cox Dayton Intl altimeter setting. For uncompensated Baro-VNAV systems, LNAV/VNAV NA below -16°C (4°F) or above 47°C (116°F). DME/DME RNP-0.3 NA. Visibility reduction for helicopters NA. If local altimeter setting not received, use James M Cox Dayton Intl altimeter setting and increase all DAs/MDAs 60 feet.

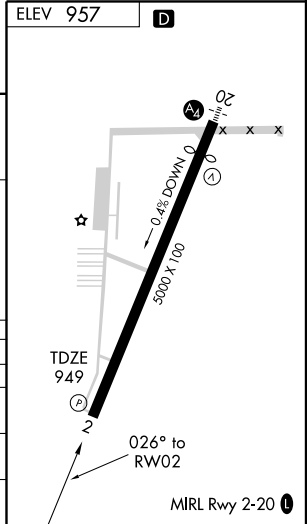
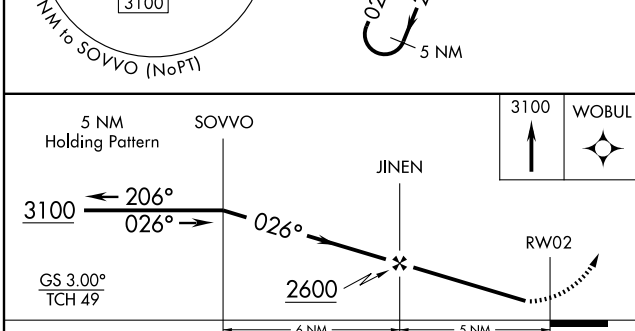
MISSED APPROACH:
Climb to 3100 direct
WOBUL and hold.

ASOS 118.375	DAYTON APP CON 118.85 127.225 327.1	CLNC DEL 119.4	UNICOM 122.8 (CTAF) U
------------------------	-----------------------------------------------	--------------------------	----------------------------------------



EC-2, 22 OCT 2009 to 19 NOV 2009

EC-2, 22 OCT 2009 to 19 NOV 2009



CATEGORY	A	B	C	D
LPV DA		1214-1	265 (300-1)	
LNAV/VNAV DA		1299-1¼	350 (400-1½)	
LNAV MDA	1420-1	471 (500-1)	1420-1¼ 471 (500-1½)	1420-1½ 471 (500-1½)
CIRCLING	1480-1¼	523 (600-1¼)	1520-1½ 563 (600-1½)	1660-2¼ 703 (800-2¼)