

LOC/DME RWY 20

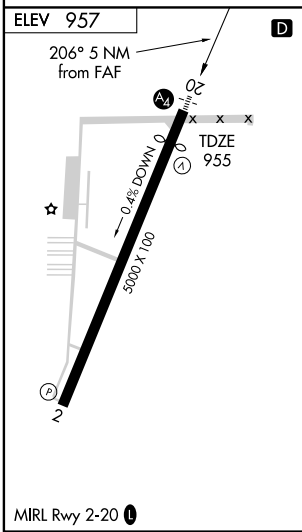
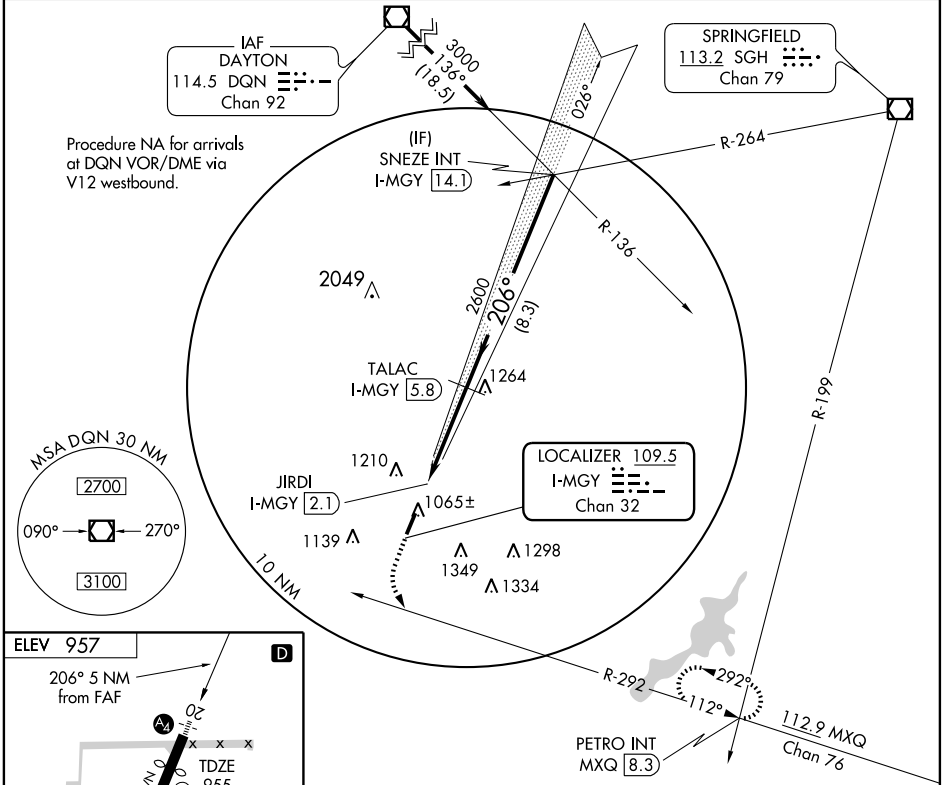
DAYTON-WRIGHT BROTHERS (MGY)

LOC/DME I-MGY 109.5 Chan 32	APP CRS 206°	Rwy Idg 4410 TDZE 955 Apt Elev 957
---	------------------------	---

NA Inoperative table does not apply. Visibility reduction by helicopters NA. If local altimeter setting not received, use James M Cox Dayton Intl altimeter setting and increase all MDAs 60 feet.

MALSF MISSED APPROACH: Climb to 1600 then climbing left turn to 3000 via heading 118° and MXQ VOR/DME R-292 to PETRO Int/MXQ 8.3 DME and hold.

ASOS 118.375	DAYTON APP CON 118.85 127.225 327.1	CLNC DEL 119.4	UNICOM 122.8 (CTAF) 0
------------------------	---	--------------------------	---------------------------------



1600	3000	PETRO INT MXQ 8.3	TALAC I-MGY 5.8	SNEZE INT I-MGY 14.1
↑		HDG 118° MXQ R-292 112.9		3000
JIRDI I-MGY 2.1		2600		Procedure Turn NA
≤ 3.04° TCH 40		VGSi and descent angles not coincident.		
1.2	3.7 NM	B	8.3 NM	D
CATEGORY	A	B	C	D
S-20		1320-1½	365 (400-1½)	
CIRCLING	1480-1½	523 (600-1½)	1520-1½ 563 (600-1½)	1660-2¼ 703 (800-2¼)

EC-2, 22 OCT 2009 to 19 NOV 2009

EC-2, 22 OCT 2009 to 19 NOV 2009