

ROCHESTER, MINNESOTA

AL-5041 (FAA)

VOR/DME RST	APP CRS	Rwy Idg	7300
112.0	204°	TDZE	1304
Chan 57		Apt Elev	1317

VOR/DME RWY 20

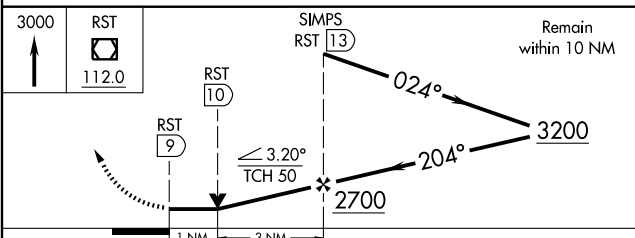
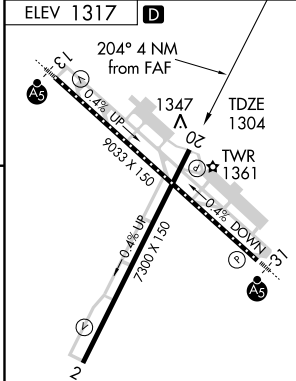
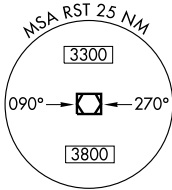
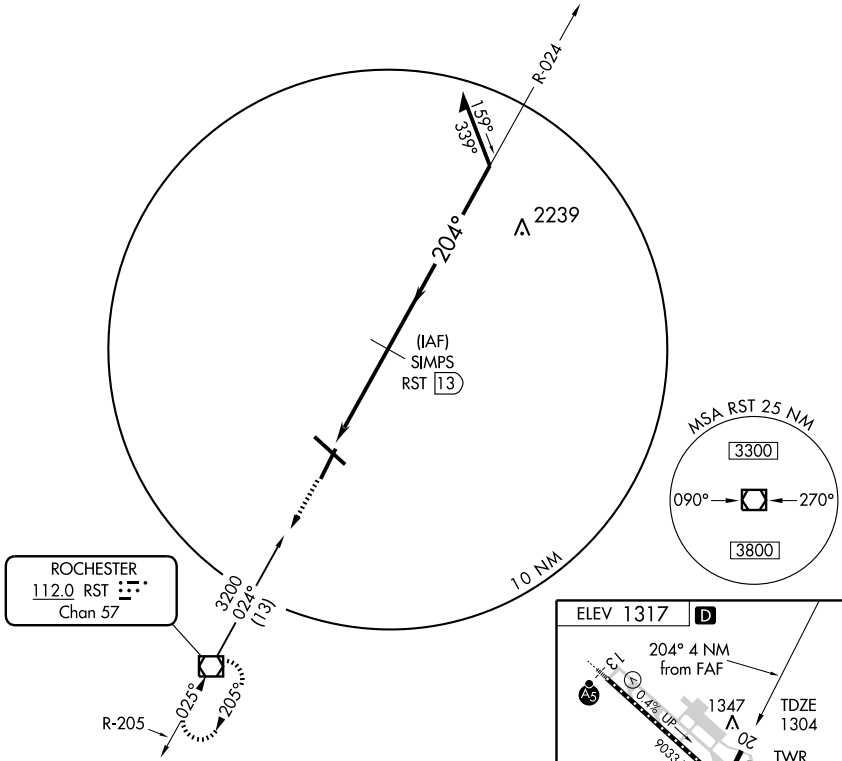
ROCHESTER INTL (RST)

ASR	MISSED APPROACH: Climb to 3000 direct RST VOR/DME and hold.			
-----	---	--	--	--

ATIS 120.5	ROCHESTER APP CON* 119.8 251.125	ROCHESTER TOWER* 118.3 (CTAF) 257.8	GND CON 121.9	UNICOM 122.95
----------------------	--	---	-------------------------	-------------------------

NC-1, 22 OCT 2009 to 19 NOV 2009

NC-1, 22 OCT 2009 to 19 NOV 2009



CATEGORY	A	B	C	D
S-20	1660-1	356 (400-1)		1660-1¼ 356 (400-1¼)
CIRCLING	1720-1 403 (500-1)	1780-1 463 (500-1)	1780-1½ 463 (500-1½)	1880-2 563 (600-2)

TDZ/CL Rwys 13 and 31
HIRL Rwy 13-31
MIRL Rwy 2-20
REIL Rwys 2 and 20

ROCHESTER, MINNESOTA
Amdt 13B 09295

43°54'N-92°30'W

ROCHESTER INTL (RST) VOR/DME RWY 20