

RNAV (GPS) RWY 31

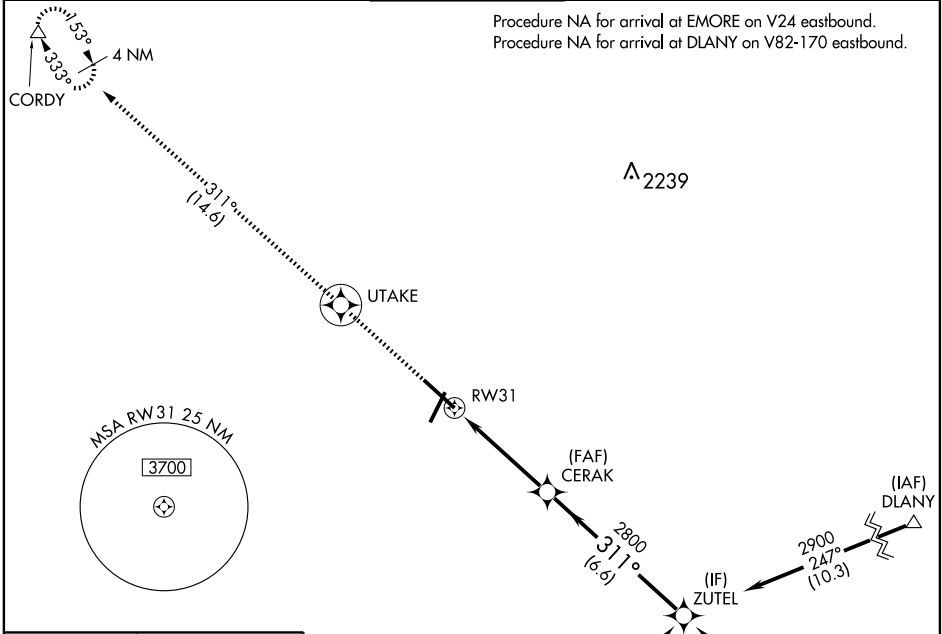
ROCHESTER INTL (RST)

APP CRS 311°	Rwy Idg TDZE Apt Elev	9033 1304 1317
------------------------	-----------------------------	---

NA Baro-VNAV NA below -17°C (2°F).
ASR GPS or RNP-0.3 required. DME/DME RNP-0.3 NA.
 For inoperative MALSR increase LNAV/VNAV Cat. D visibility to RVR 5000 and increase LNAV Cat. D visibility to RVR 6000.

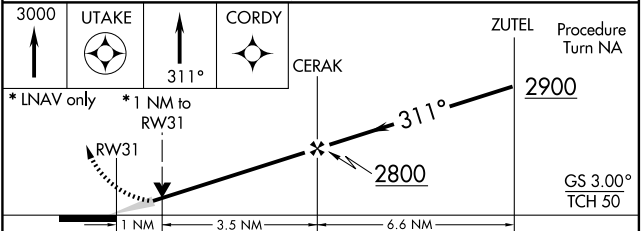
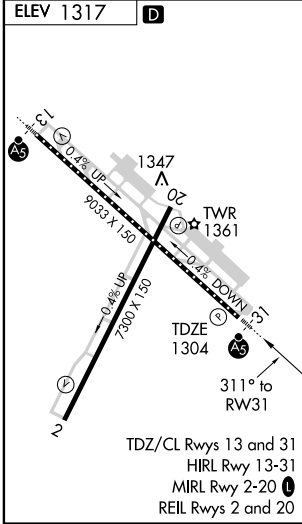
MALSR MISSED APPROACH: Climb to 3000 direct UTAKE WP and via 311° track to CORDY WP and hold.

ATIS 120.5	ROCHESTER APP CON* 119.8 251.125	ROCHESTER TOWER* 118.3 (CTAF) 0 257.8	GND CON 121.9	UNICOM 122.95
----------------------	--	---	-------------------------	-------------------------



NC-1, 22 OCT 2009 to 19 NOV 2009

NC-1, 22 OCT 2009 to 19 NOV 2009



CATEGORY	A				B		C		D
GLS PA DA	NA								
LNAV/VNAV MDA	1620/24		316 (400-½)				1620/40 316 (400-¾)		
LNAV MDA	1680/24		376 (400-½)				1680/50 376 (400-1)		
CIRCLING	1720-1 403 (500-1)		1780-1 463 (500-1)		1780-1½ 463 (500-1½)		1880-2 563 (600-2)		