

ROCHESTER, MINNESOTA

AL-5041 (FAA)

# RNAV (GPS) RWY 20

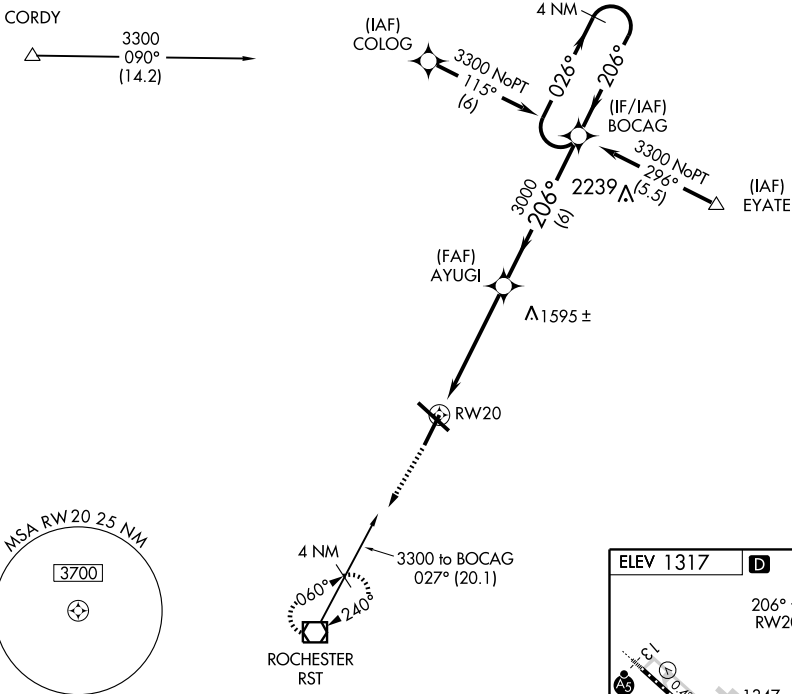
ROCHESTER INTL (RST)

APP CRS <b>206°</b>	Rwy Idg <b>7300</b> TDZE <b>1304</b> Apt Elev <b>1317</b>
------------------------	---

**NA** GPS or RNP-0.3 required. DME/DME RNP-0.3 NA. **ASR** MISSED APPROACH: Climb to 3000 direct RST VOR/DME and hold.

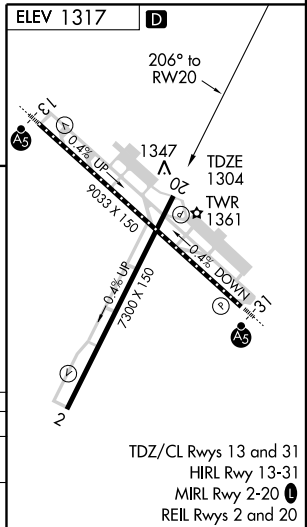
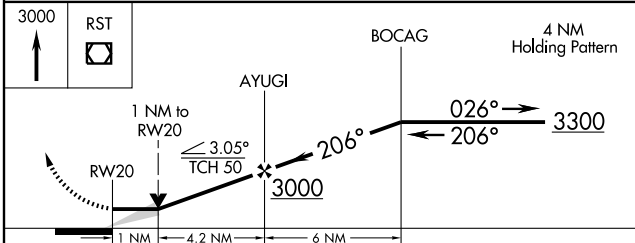
ATIS <b>120.5</b>	ROCHESTER APP CON * <b>119.8 251.125</b>	ROCHESTER TOWER * <b>118.3 (CTAF) 257.8</b>	GND CON <b>121.9</b>	UNICOM <b>122.95</b>
----------------------	---	--	-------------------------	-------------------------

Procedure NA for arrivals at EYATE via V218 southeastbound.



NC-1, 22 OCT 2009 to 19 NOV 2009

NC-1, 22 OCT 2009 to 19 NOV 2009



CATEGORY	A	B	C	D
LNVA MDA	1660-1 356 (400-1)			1660-1¼ 356 (400-1¼)
CIRCLING	1720-1 403 (500-1)	1780-1 463 (500-1)	1780-1½ 463 (500-1½)	1880-2 563 (600-2)

ROCHESTER, MINNESOTA  
Orig 09295

43°54'N-92°30'W

# ROCHESTER INTL (RST)

## RNAV (GPS) RWY 20