

RNAV (GPS) RWY 13

ROCHESTER INTL (RST)

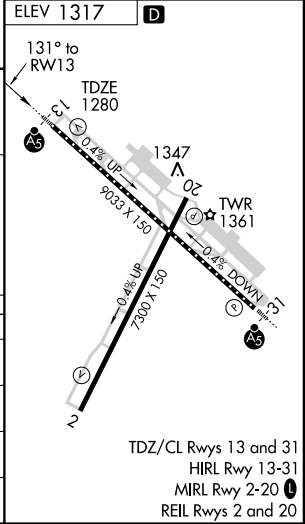
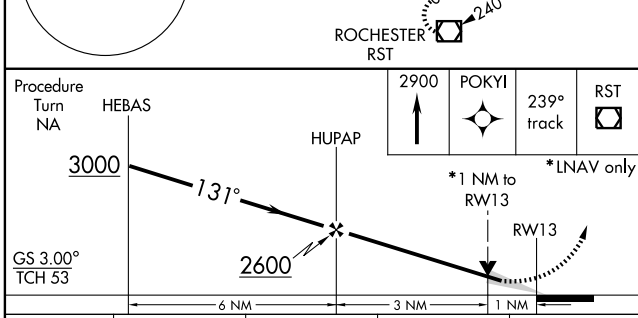
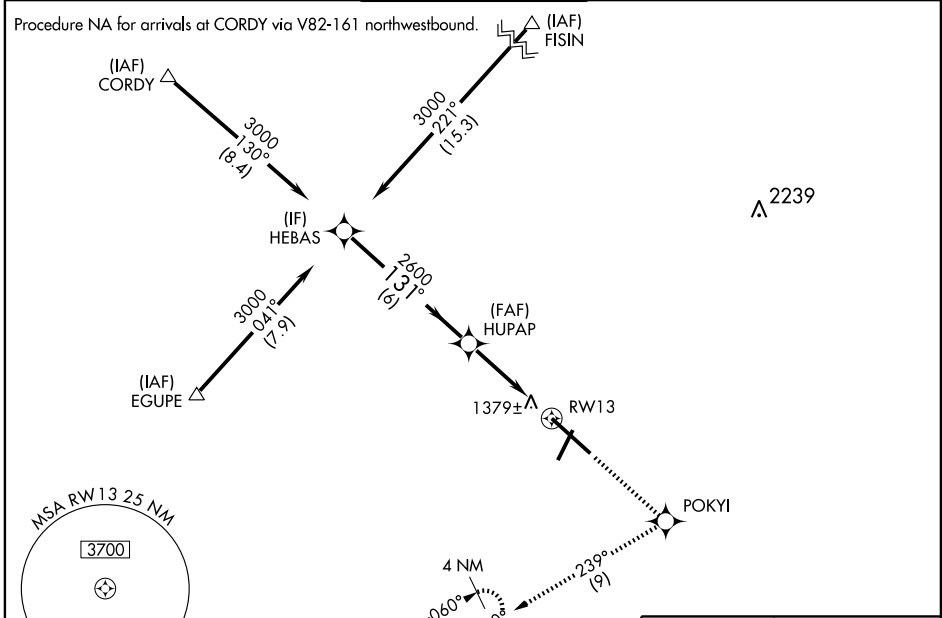
WAAS CH 90202 W13A	APP CRS 131°	Rwy Idg 9033 TDZE 1280 Apt Elev 1317
----------------------------------------	------------------------	-----------------------------------------------------------------

ASR DME/DME RNP-0.3 NA.
For uncompensated Baro-VNAV system, LNAV/VNAV NA below -17°C (2°F) or above 45°C (114°F).
For inoperative MALSR increase LPV all Cats visibility to RVR 5000 and LNAV Cat D visibility to RVR 6000.

MALSR
A5

MISSED APPROACH: Climb to 2900 direct POKYI and via 239° track to RST VOR/DME and hold.

ATIS 120.5	ROCHESTER APP CON* 119.8 251.125	ROCHESTER TOWER* 118.3 (CTAF) 257.8	GND CON 121.9	UNICOM 122.95
----------------------	--------------------------------------------	-----------------------------------------------	-------------------------	-------------------------



CATEGORY	A	B	C	D
LPV DA		1530/24	250 (300-½)	
LNAV/VNAV DA		1679/50	399 (400-1)	
LNAV MDA	1640/24	360 (400-½)		1640/50 360 (400-1)
CIRCLING	1720-1½ 403 (500-1½)	1780-1½	463 (500-1½)	1880-2 563 (600-2)

NC-1, 22 OCT 2009 to 19 NOV 2009

NC-1, 22 OCT 2009 to 19 NOV 2009