

ILS or LOC RWY 31

ROCHESTER INTL (RST)

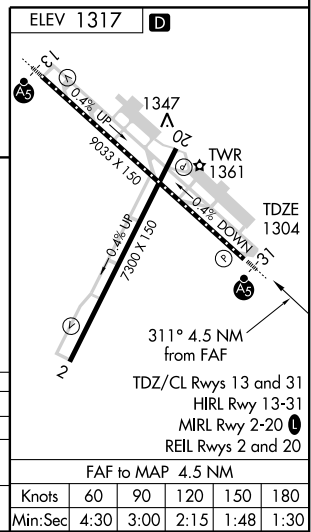
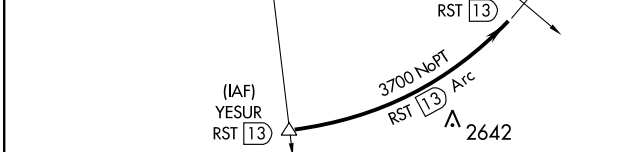
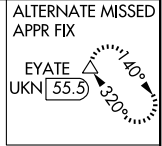
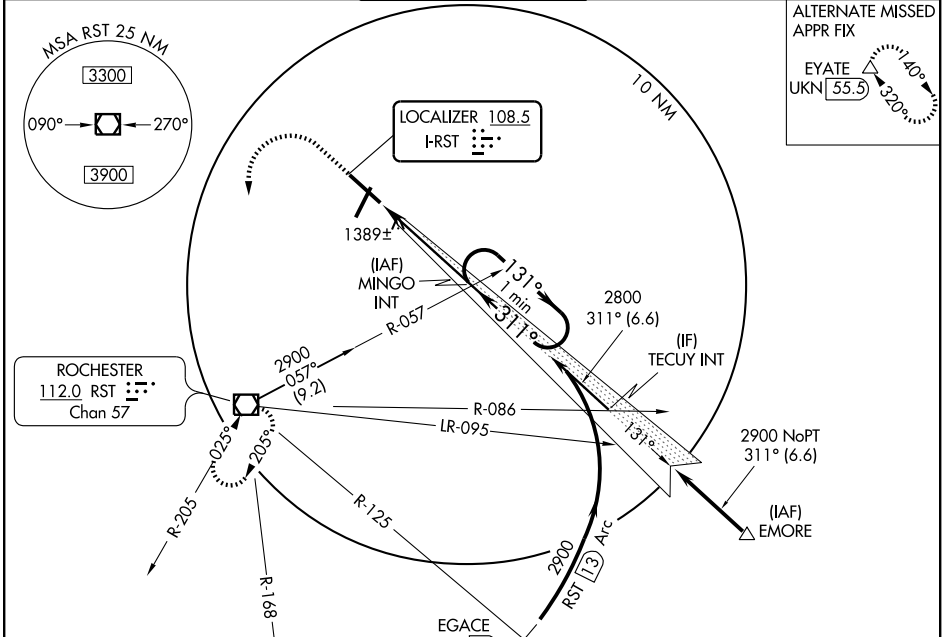
LOC I-RST 108.5	APP CRS 311°	Rwy Idg 9033
		TDZE 1304
		Apt Elev 1317

Autopilot coupled approach not authorized below 1542 MSL.

MALSR

MISSED APPROACH: Climb to 2000 then climbing left turn to 3000 direct RST VOR/DME and hold.

ATIS 120.5	ROCHESTER APP CON * 119.8 251.125	ROCHESTER TOWER * 118.3 (CTAF) 257.8	GND CON 121.9	UNICOM 122.95
----------------------	---	--	-------------------------	-------------------------



CATEGORY	A	B	C	D
S-ILS 31	1504/18		200 (200-½)	
S-LOC 31	1660/24		356 (400-½)	
			1660/40	
			356 (400-¾)	
CIRCLING	1720-1	1780-1	1780-1½	1880-2
	403 (500-1)	463 (500-1)	463 (500-1½)	563 (600-2)

NC-1, 22 OCT 2009 to 19 NOV 2009

NC-1, 22 OCT 2009 to 19 NOV 2009