

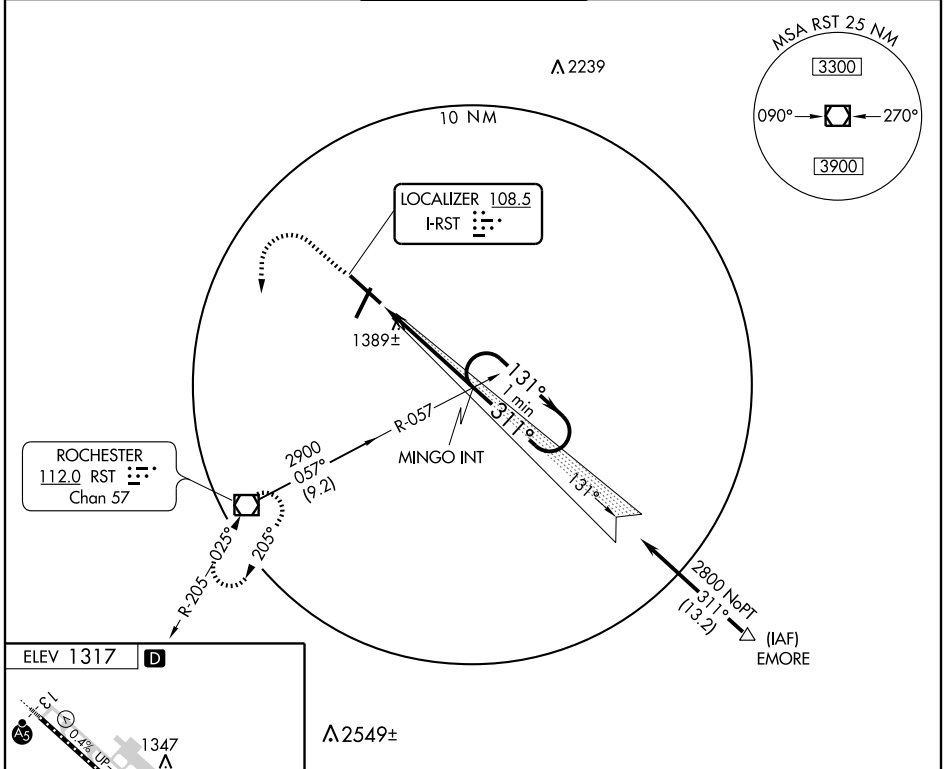
COPTER ILS or LOC RWY 31

ROCHESTER INTL (RST)

LOC I-RST 108.5	APP CRS 311°	Rwy Idg TDZE Apt Elev	9033 1304 1317
---------------------------	------------------------	-----------------------------	---

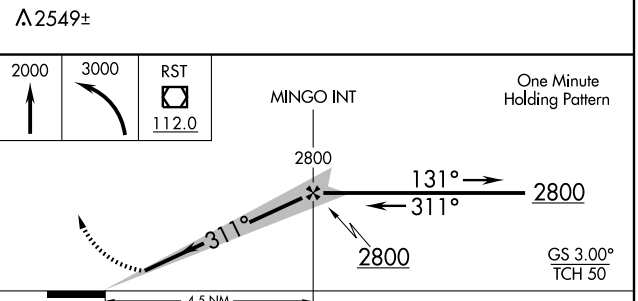
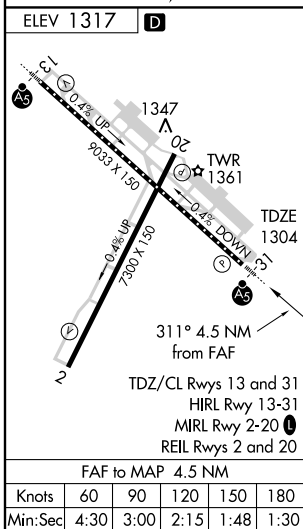
	For inoperative MALS, increase visibility to RVR 2400.		MISSED APPROACH: Climb to 2000 then climbing left turn to 3000 direct RST VOR/DME and hold.

ATIS 120.5	ROCHESTER APP CON* 119.8 251.125	ROCHESTER TOWER* 118.3 (CTAF) 257.8	GND CON 121.9	UNICOM 122.95
----------------------	--	---	-------------------------	-------------------------



NC-1, 22 OCT 2009 to 19 NOV 2009

NC-1, 22 OCT 2009 to 19 NOV 2009



CATEGORY	COPTER	B	C	D
S-ILS 31	1504/16 200 (200-¼)		NA	
S-LOC 31	1660/16 356 (400-¼)		NA	
CIRCLING		NA		