

VOR or TACAN RWY 16

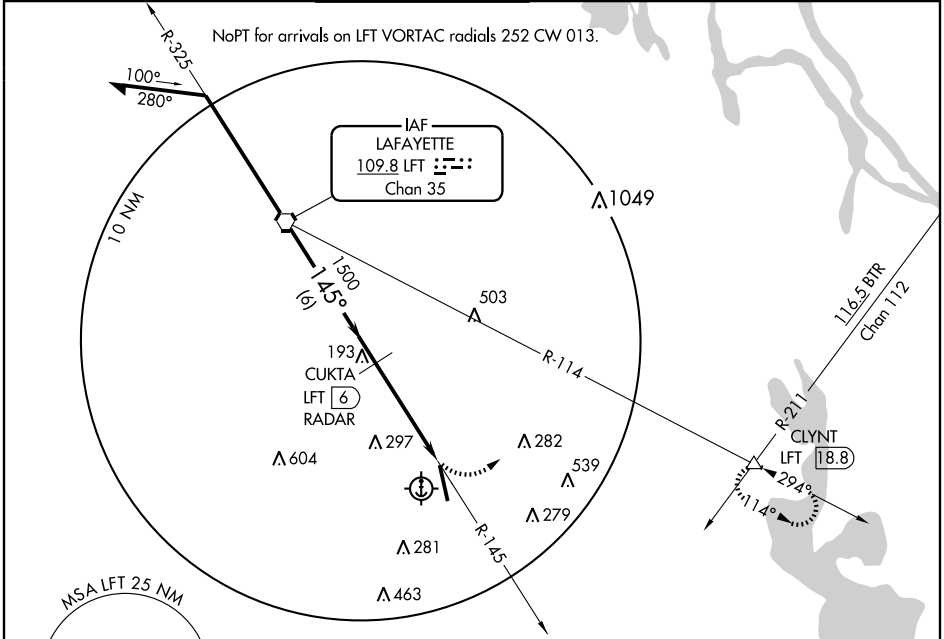
NEW IBERIA/ACADIANA RGNL (A.R.A.)

VORTAC LFT 109.8 Chan 35	APP CRS 145°	Rwy Idg 8002 TDZE 24 Apt Elev 24
--	------------------------	---

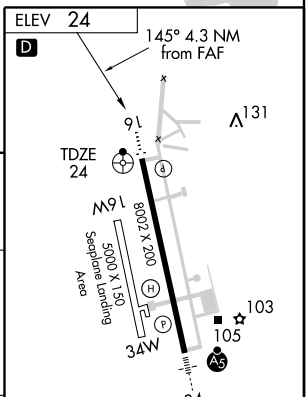
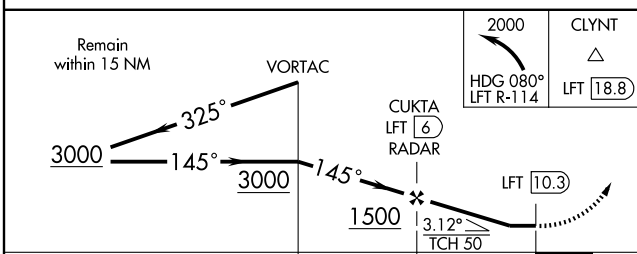
▼ Visibility reduction by helicopters NA. DME or RADAR required. When local altimeter setting not received, use Lafayette altimeter setting and increase all MDA 40 feet and increase visibility S-16 Cat D ¼ mile. Inoperative table does not apply.

ODALS MISSED APPROACH: Climbing left turn to 2000 via heading 080° and LFT R-114 to CLYNT Int/18.8 DME and hold.

ASOS 133.325	LAFAYETTE APP CON * 121.1 268.7	ACADIANA TOWER * 125.0 (CTAF) 239.3	GND CON 121.7	CLNC DEL 121.7 122.7 *	UNICOM 122.95
------------------------	---	--	-------------------------	----------------------------------	-------------------------



DME or RADAR REQUIRED



CATEGORY	A	B	C	D	E
S-16	440-1	416 (500-1)	440-1¼ 416 (500-1¼)	440-1½	416 (500-1½)
CIRCLING	440-1 416 (500-1)	480-1 456 (500-1)	480-1½ 456 (500-1½)	580-2 556 (600-2)	840-3 816 (900-3)

HIRL Rwy 16-34

MIRL Rwy 16W-34W *

FAF to MAP 4.3 NM

Knots	60	90	120	150	180
Min:Sec	4:18	2:52	2:09	1:43	1:26

SC-4, 22 OCT 2009 to 19 NOV 2009

SC-4, 22 OCT 2009 to 19 NOV 2009