


VOR/DME RWY 34

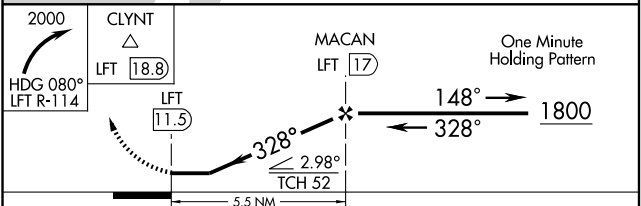
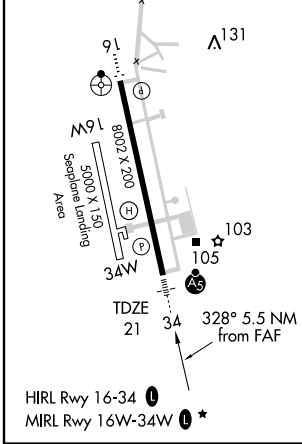
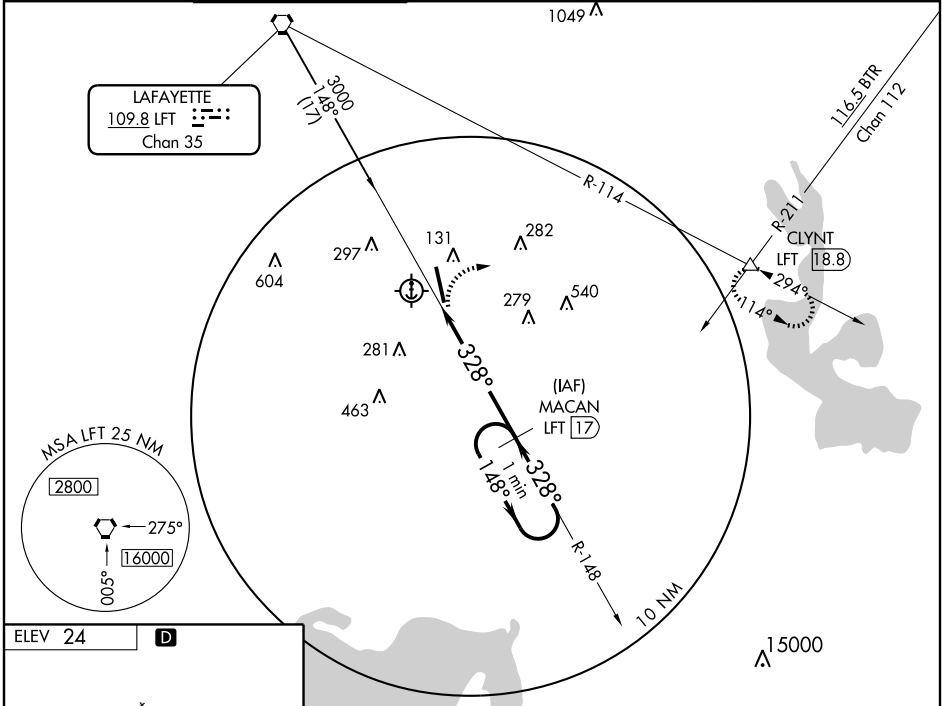
NEW IBERIA/ACADIANA RGNL (A.R.A)

VORTAC LFT 109.8	APP CRS 328°	Rwy Idg 8002	TDZE 21
Chan 35		Apt Elev 24	

▲ When control tower closed, use Lafayette Rgnl altimeter setting. Local altimeter setting: S-34 inoperative table does not apply to Cat D. Lafayette Rgnl setting altimeter setting minimum: For inoperative MALSR increase S-34 Cats A/B visibility to 1. Inoperative table does not apply to Cat D.

MALSR
 MISSED APPROACH: Climbing right turn to 2000 via heading 080° and LFT R-114 to CLYNT Int/ LFT 18.8 DME and hold.

LAFAYETTE APP CON *	ACADIANA TOWER *	GND CON	CLNC DEL	UNICOM
121.1 268.7	125.0 (CTAF) 239.3	121.7	121.7 122.7 0*	122.95



CATEGORY	A	B	C	D
S-34	500-½	479 (500-½)	500-¾ 479 (500-¾)	500-1½ 479 (500-1½)
CIRCLING	500-1	476 (500-1)	500-1½ 476 (500-1½)	580-2 556 (600-2)
LAFAYETTE RGNL ALTIMETER SETTING MINIMUMS				
S-34	520-¾ 499 (500-¾)		520-1½ 499 (500-1½)	
CIRCLING	520-1	496 (500-1)	520-1½ 496 (500-1½)	620-2 596 (600-2)

SC-4, 22 OCT 2009 to 19 NOV 2009

SC-4, 22 OCT 2009 to 19 NOV 2009