

RNAV (GPS) RWY 34

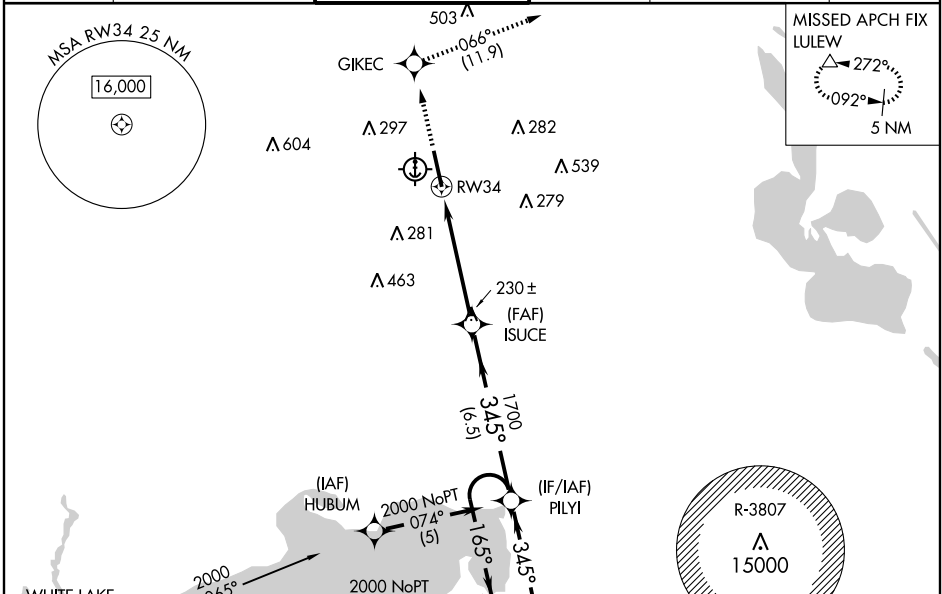
NEW IBERIA/ACADIANA RGNL (A.R.A.)

WAAS CH 40301 W34A	APP CRS 345°	Rwy Idg 8002 TDZE 21 Apt Elev 24
----------------------------------------	------------------------	-------------------------------------------------------------

⚠ DME/DME RNP-0.3 NA. BARO-VNAV and VDP NA when using Lafayette altimeter setting. For uncompensated BARO-VNAV systems, LNAV/VNAV NA below -1.5°C (5°F) or above 48°C (120°F). If local altimeter setting not received, use Lafayette altimeter setting and increase all DAs/MDAs 40 feet. For inoperative MALS/R increase LPV all Cats visibility to ¾, and LNAV/VNAV Cat D to 1. Inoperative table does not apply to LNAV Cat D.

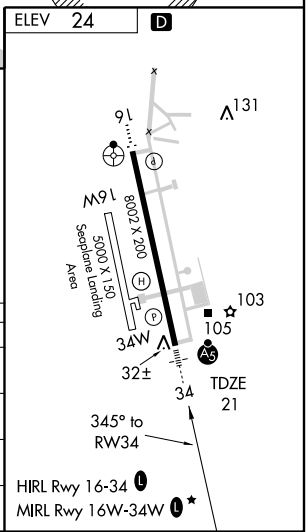
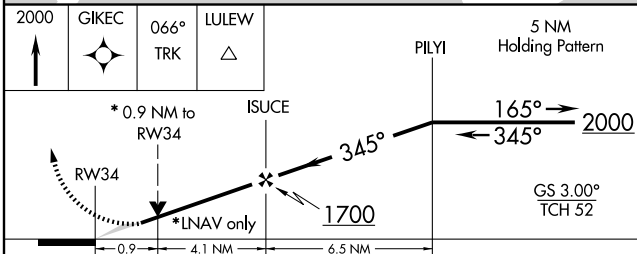
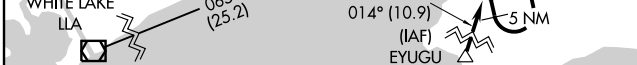
MALS/R
 MISSED APPROACH:
Climb to 2000 direct GIKEC and via 066° track to LULEW and hold.

ASOS 133.325	LAFAYETTE APP CON * 121.1 268.7	ACADIANA TOWER * 125.0 (CTAF) 239.3	GND CON 121.7	CLNC DEL 121.7 122.7	UNICOM 122.95
------------------------	-------------------------------------------	------------------------------------------------------	-------------------------	--------------------------------	-------------------------



SC-4, 22 OCT 2009 to 19 NOV 2009

SC-4, 22 OCT 2009 to 19 NOV 2009



CATEGORY	A	B	C	D
LPV DA		271-½	250 (300-½)	
LNAV/VNAV DA		310-½	289 (300-½)	310-¾ 289 (300-¾)
LNAV MDA		360-½	339 (400-½)	360-1 339 (400-1)
CIRCLING	440-1 416 (500-1)	480-1 456 (500-1)	480-1½ 456 (500-1½)	580-2 556 (600-2)