

RNAV (GPS) RWY 5

KINSTON RGNL JETPORT AT STALLINGS FIELD (ISO)

WAAS CH 82004 W05A	APP CRS 050°	Rwy ldg 10960 TDZE 94 Apt Elev 94
--	------------------------	--

▼ If local altimeter setting not received, use Goldsboro-Wayne Muni altimeter setting and increase LPV DA to 500 feet, increase LNAV/VNAV DA to 533 feet; increase all MDAs 60 feet. VDP NA when using Goldsboro-Wayne Muni altimeter setting. For inoperative **▲** MALSR, increase LPV visibility to 1¼ mile all Cats. Baro-VNAV NA when using Goldsboro-Wayne Muni altimeter setting. DME/DME RNP-0.3 NA. For uncompensated Baro-VNAV systems, LNAV/VNAV NA below -15°C (5°F) or above 48°C (118°F).

MALSR



MISSED APPROACH:
Climb to 2500 direct WINTI and hold.

AWOS-3
132.75

SEYMOUR JOHNSON APP CON ★

127.3 273.6

KINSTON TOWER ★

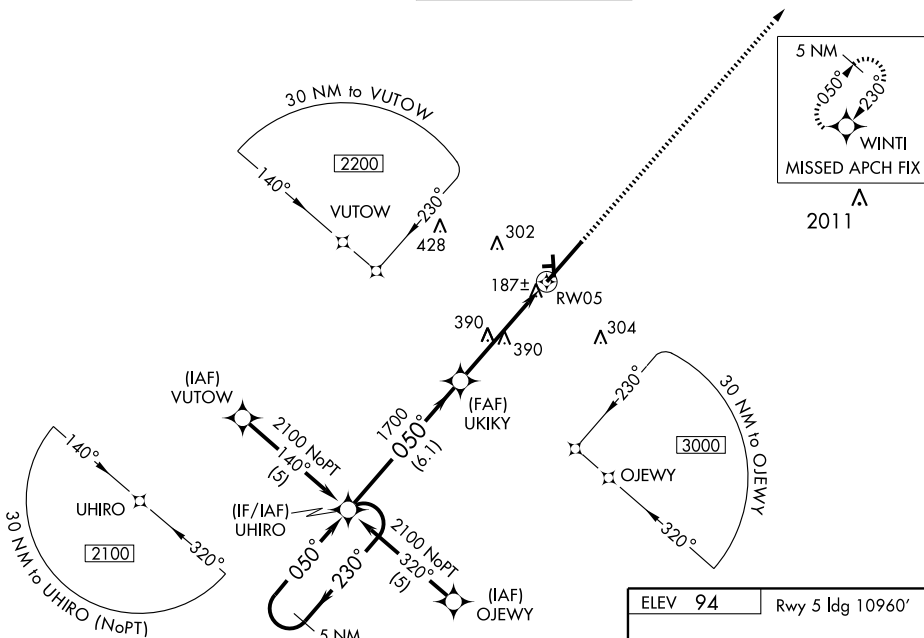
120.6 (CTAF) 335.55

GND CON

121.9

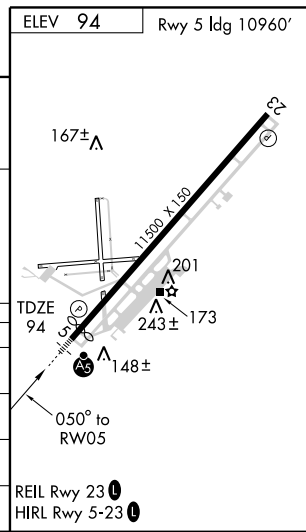
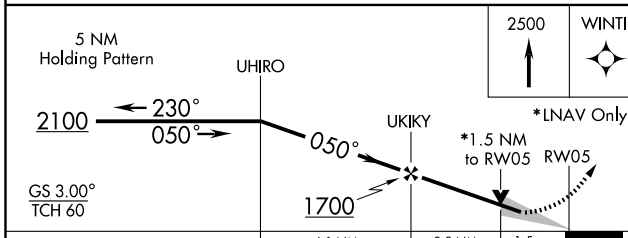
UNICOM

122.95



SE-2, 22 OCT 2009 to 19 NOV 2009

SE-2, 22 OCT 2009 to 19 NOV 2009



CATEGORY	A	B	C	D
LPV DA		450-¾	356 (400-¾)	
LNAV/VNAV DA		483-¾	389 (400-¾)	
LNAV MDA	640-½	546 (600-½)	640-1 546 (600-1)	640-1¼ 546 (600-1¼)
CIRCLING	640-1	546 (600-1)	640-1½ 546 (600-1½)	660-2 566 (600-2)

RNAV (GPS) RWY 5