

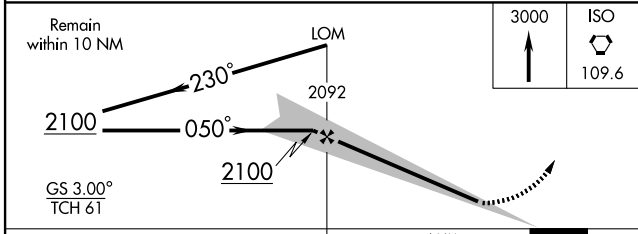
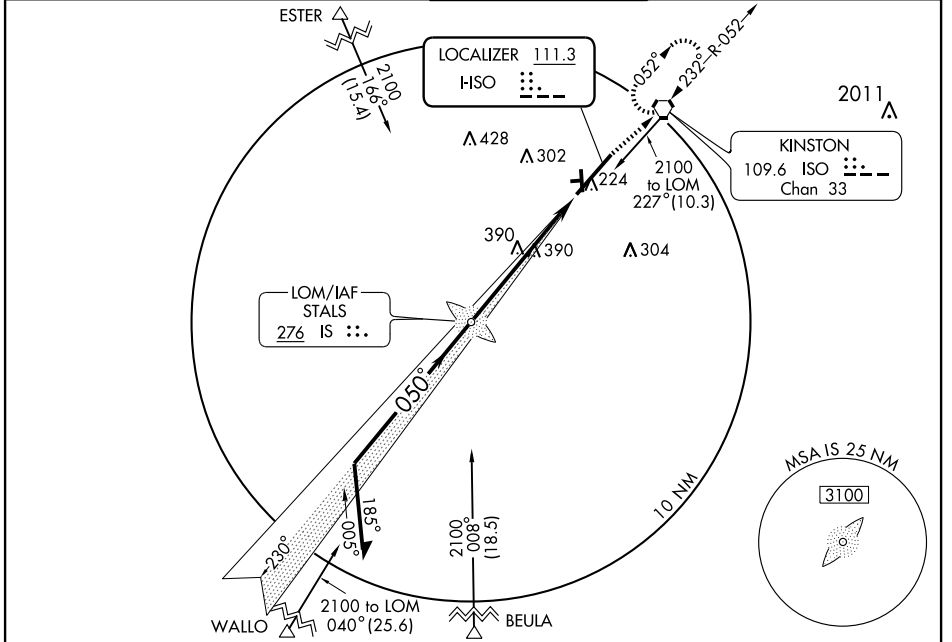
# ILS RWY 5

KINSTON RGNL JETPORT AT STALLINGS FIELD (ISO)

LOC I-ISO <b>111.3</b>	APP CRS <b>050°</b>	Rwy ldg <b>10960</b> TDZE <b>94</b> Apt Elev <b>94</b>
---------------------------	------------------------	--

When control tower closed, use Seymour Johnson AFB altimeter setting. ADF REQUIRED	MALS R	MISSED APPROACH: Climb to 3000 direct ISO VORTAC and hold.	
		AWOS-3 <b>132.75</b>	SEYMOUR JOHNSON APP CON * <b>127.3 273.6</b>

AWOS-3 <b>132.75</b>	SEYMOUR JOHNSON APP CON * <b>127.3 273.6</b>	KINSTON TOWER * <b>120.6 (CTAF) 335.55</b>	GND CON <b>121.9</b>	UNICOM <b>122.95</b>
-------------------------	---	---	-------------------------	-------------------------



ELEV 94	Rwy 5 ldg 10960'
3000 ISO	109.6
TDZE 94 050° 6 NM from FAF	REIL Rwy 23 HIRL Rwy 5-23
FAF to MAP 6 NM	
Knots	60 90 120 150 180
Min:Sec	6:00 4:00 3:00 2:24 2:00

CATEGORY	A	B	C	D
S-ILS 5	294-1/2 200 (200-1/2)			
S-LOC 5	640-1/2	546 (600-1/2)	640-1 546 (600-1)	640-1 1/4 546 (600-1 1/4)
CIRCLING	640-1	546 (600-1)	640-1 1/2 546 (600-1 1/2)	660-2 566 (600-2)
SEYMOUR JOHNSON AFB ALTIMETER SETTING MINIMUMS				
S-ILS 5	336-1/2 242 (300-1/2)			
S-LOC 5	700-1/2	606 (700-1/2)	700-1 1/4 606 (700-1 1/4)	700-1 1/2 606 (700-1 1/2)
CIRCLING	700-1	606 (700-1)	700-3/4 606 (700-3/4)	700-2 606 (700-2)

# ILS RWY 5

SE-2, 22 OCT 2009 to 19 NOV 2009

SE-2, 22 OCT 2009 to 19 NOV 2009