

HOUMA, LOUISIANA

AL-5037 (FAA)

VORTAC TBD	APP CRS	Rwy Idg	4999
112.0	121°	TDZE	9
Chan 57		Apt Elev	10

VOR RWY 12

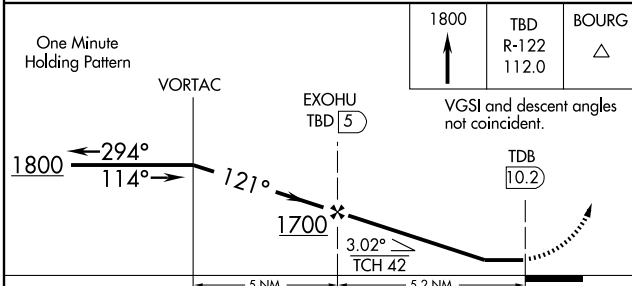
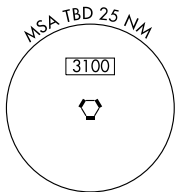
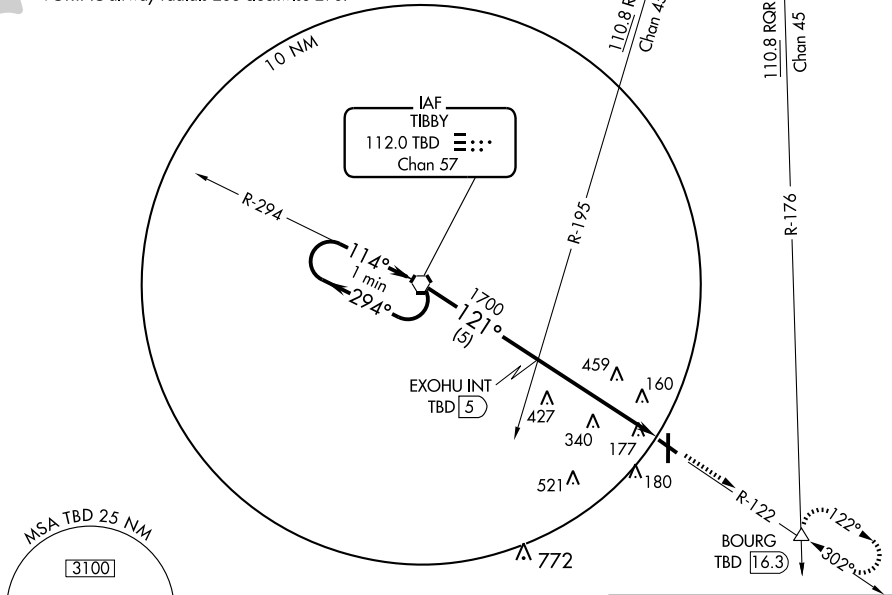
HOUMA-TERREBONNE (HUM)

⚠ When local altimeter setting not received, use Louis Armstrong New Orleans Intl altimeter setting and increase all MDA 80 feet, increase S-12 Cat B/C/D and Circling Cat B/C/D visibility 1/4 mile.

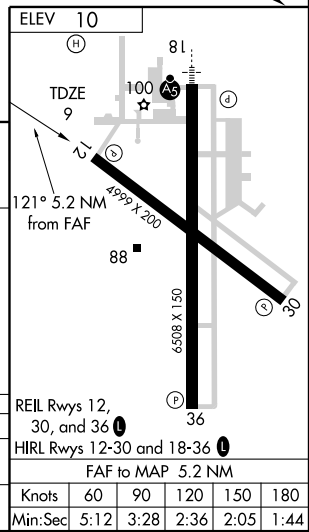
⚠ MISSED APPROACH: Climb to 1800 via TBD R-122 to BOURG Int/TBD 16.3 DME and hold.

ATIS 120.25	NEW ORLEANS APP CON 118.9 256.9	HOUMA TOWER* 125.3 (CTAF) 0346.3	GND CON 121.8	UNICOM 122.95
-----------------------	---	--	-------------------------	-------------------------

No Procedure Turn for arrivals on TBD
VORTAC airway radials 268 clockwise 296.



CATEGORY	A	B	C	D
S-12	720-1 711 (800-1)		720-2 711 (800-2)	720-2 1/4 711 (800-2 1/4)
CIRCLING	720-1 710 (800-1)		720-2 710 (800-2)	720-2 1/4 710 (800-2 1/4)



SC-4, 22 OCT 2009 to 19 NOV 2009

SC-4, 22 OCT 2009 to 19 NOV 2009

HOUMA, LOUISIANA
Amdt 5C 09183

29°34'N-90°40'W

HOUMA-TERREBONNE (HUM) VOR RWY 12