

RNAV (GPS) RWY 12

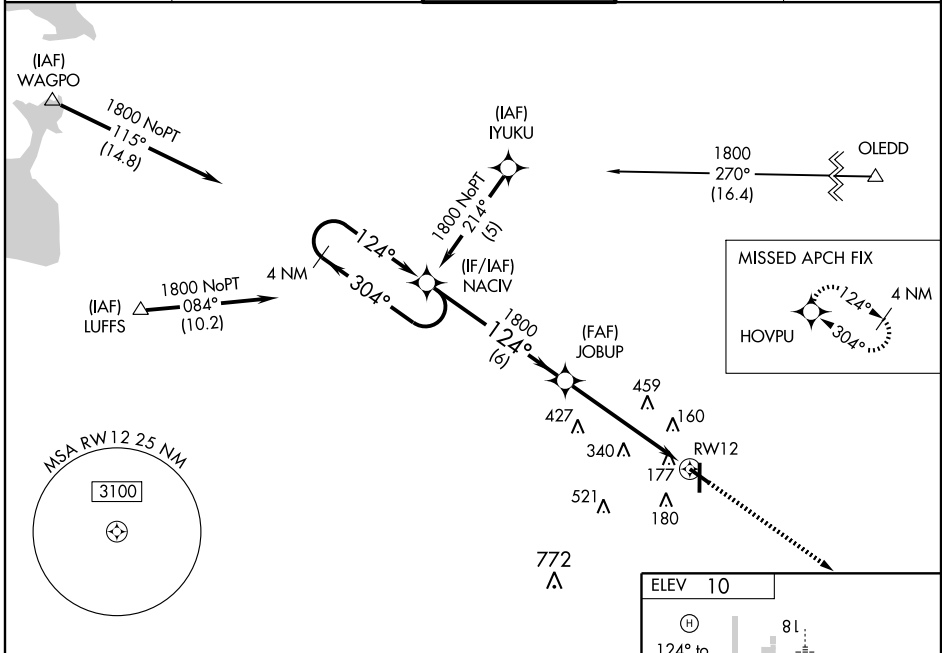
HOUMA-TERREBONNE (HUM)

WAAS CH 56313 W12A	APP CRS 124°	Rwy Idg TDZE Apt Elev	4999 9 10
--	------------------------	-----------------------------	--------------------------------------

▼ For uncompensated Baro-VNAV systems, LNAV/VNAV NA below -15°C (5°F) or above 49°C (120°F).
▲ DME/DME RNP-0.3 NA. Visibility reduction by helicopters NA.
 When local altimeter setting not received, use Louis Armstrong New Orleans Intl altimeter setting and increase all DA 77 feet and all MDA 80 feet, increase LPV and LNAV/VNAV all Cats and LNAV and Circling Cat B/C/D visibility ¼ mile. Baro-VNAV NA when using Louis Armstrong New Orleans Intl altimeter setting.

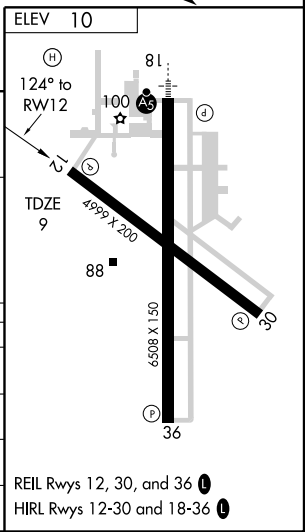
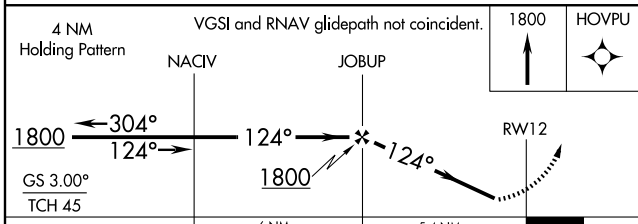
MISSED APPROACH: Climb to 1800 direct HOVPU and hold.

ATIS 120.25	NEW ORLEANS APP CON 118.9 256.9	HOUMA TOWER* 125.3 (CTAF) 0346.3	GND CON 121.8	UNICOM 122.95
-----------------------	---	---	-------------------------	-------------------------



SC-4, 22 OCT 2009 to 19 NOV 2009

SC-4, 22 OCT 2009 to 19 NOV 2009



CATEGORY	A	B	C	D
LPV DA	294-1 285 (300-1)			
LNAV/VNAV DA	491-1¾ 482 (500-1¾)			
LNAV MDA	680-1 671 (700-1)	680-2 671 (700-2)		680-2¼ 671 (700-2¼)
CIRCLING	680-1 670 (700-1)	680-2 670 (700-2)		680-2¼ 670 (700-2¼)

REIL Rwy 12, 30, and 36 **Ⓛ**
 HIRL Rwy 12-30 and 18-36 **Ⓛ**