

HOUMA, LOUISIANA

AL-5037 (FAA)

COPTER VOR/DME RWY 12

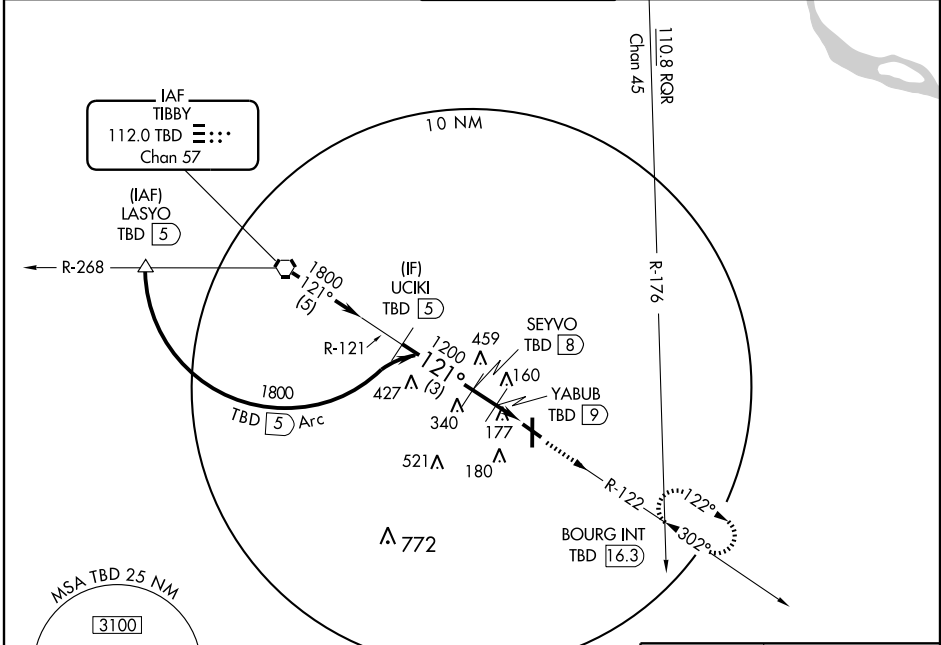
HOUMA-TERREBONNE (HUM)

VORTAC TBD 112.0 Chan 57	APP CRS 121°	Rwy Idg TDZE Apt Elev	4999 9 10
---------------------------------------	------------------------	-----------------------------	--------------------------------------

⚠ When local altimeter setting not received, use Louis Armstrong New Orleans Intl altimeter setting and increase MDA 80 feet.

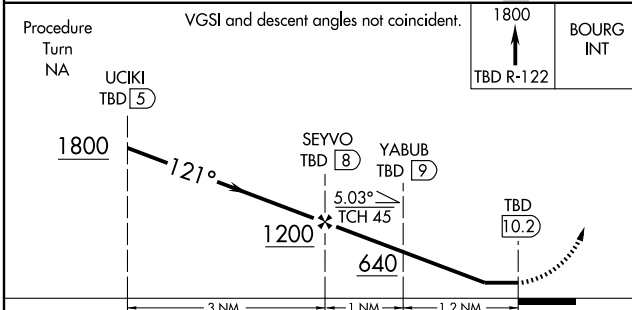
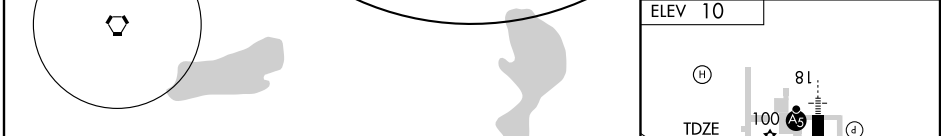
MISSED APPROACH: Climb to 1800 via TBD VORTAC R-122 to BOURG INT/16.3 DME and hold.

ATIS 120.25	NEW ORLEANS APP CON 118.9 256.9	HOUMA TOWER* 125.3 (CTAF) 0346.3	GND CON 121.8	UNICOM 122.95
-----------------------	---	--	-------------------------	-------------------------

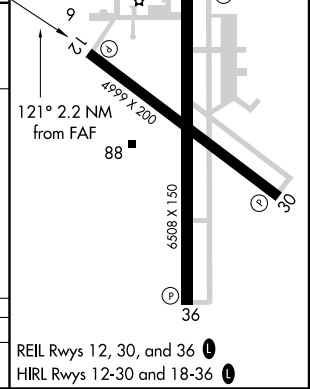


SC-4, 22 OCT 2009 to 19 NOV 2009

SC-4, 22 OCT 2009 to 19 NOV 2009



CATEGORY	COPTER	B	C	D
H-12	440- ³ / ₄ 431 (500- ³ / ₄)	NA	NA	NA



HOUMA, LOUISIANA
Amdt 4 09183

29°34'N-90°40'W

HOUMA-TERREBONNE (HUM) COPTER VOR/DME RWY 12