

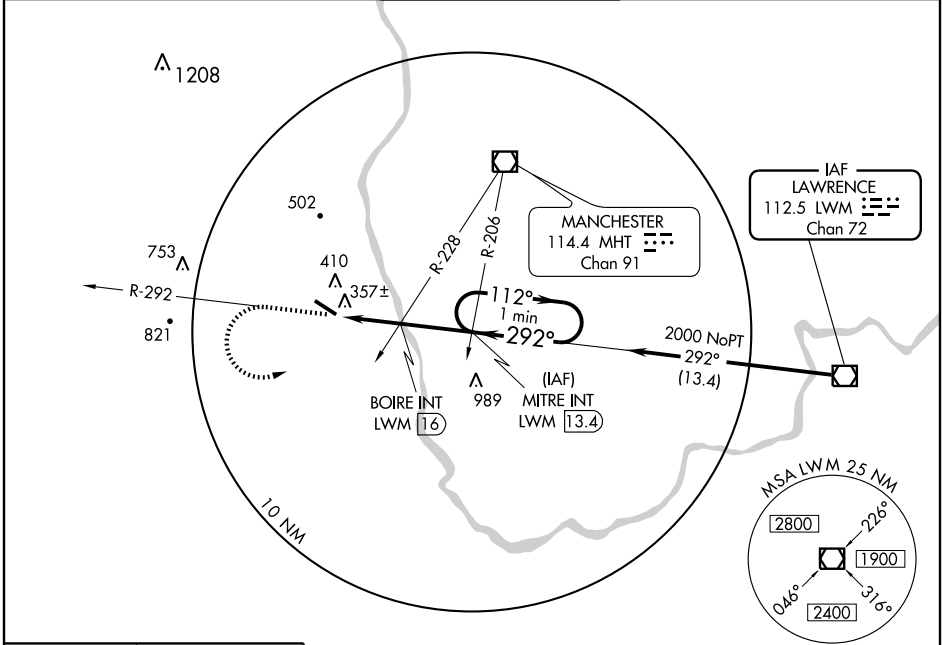
VOR/DME LWM 112.5 Chan 72	APP CRS 292°	Rwy Idg TDZE 193 Apt Elev 200	5501
---	------------------------	---	-------------

VOR RWY 32
NASHUA/BOIRE FIELD (ASH)

⚠ When local altimeter not received, use Manchester altimeter setting and increase all MDAs 40 feet and Cat C and D visibilities ¼ mile.

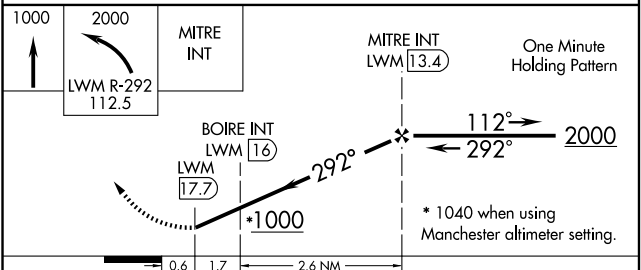
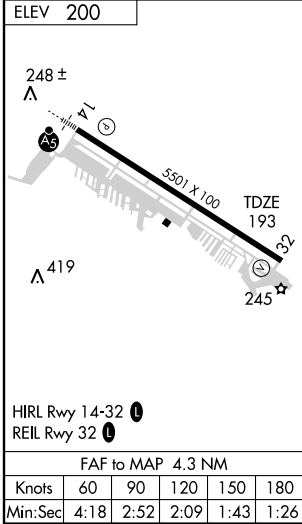
⚠ MISSED APPROACH: Climb to 1000 then climbing left turn to 2000 via LWM R-292 to MITRE INT and hold.

ATIS 125.1	BOSTON APP CON 124.9 269.075	NASHUA TOWER ★ 133.2 (CTAF) 0	GND CON 121.8	CLNC DEL 121.8
----------------------	--	---	-------------------------	--------------------------



NE-1, 22 OCT 2009 to 19 NOV 2009

NE-1, 22 OCT 2009 to 19 NOV 2009



CATEGORY	A	B	C	D
S-32	1000-1 807 (800-1)	1000-1¼ 807 (800-1¼)	1000-2¼ 807 (800-2¼)	1000-2½ 807 (800-2½)
CIRCLING	1000-1 800 (800-1)	1000-1¼ 800 (800-1¼)	1000-2¼ 800 (800-2¼)	1000-2½ 800 (800-2½)
BOIRE INT MINIMUMS				
S-32	620-1	427 (500-1)	620-1¼ 427 (500-1¼)	620-1½ 427 (500-1½)
CIRCLING	800-1 600 (600-1)	840-1 640 (700-1)	840-1¾ 640 (700-1¾)	840-2 640 (700-2)