

RNAV (GPS) RWY 32

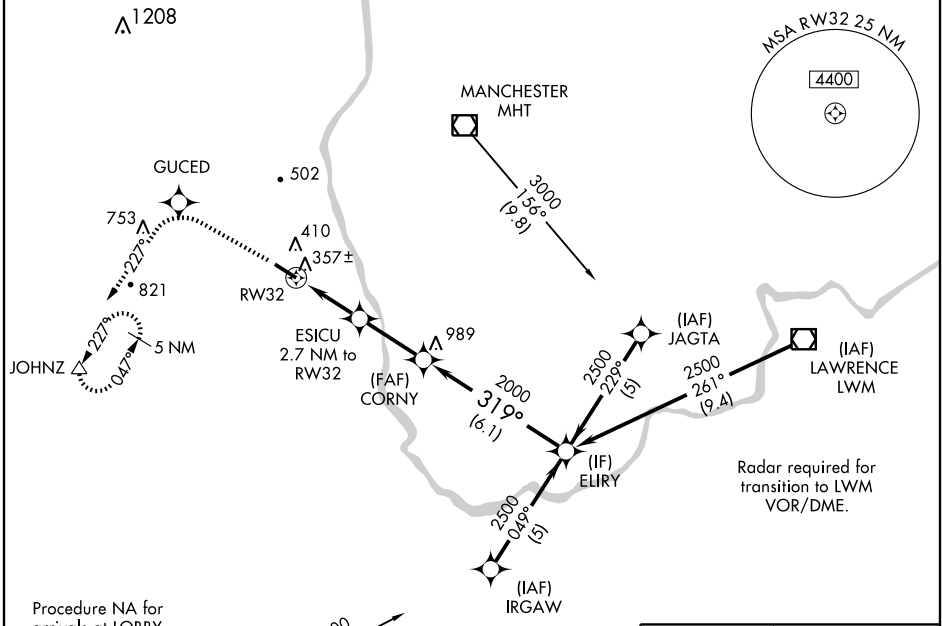
NASHUA/BOIRE FIELD (ASH)

WAAS CH 86402 W32A	APP CRS 319°	Rwy Idg TDZE 192 Apt Elev 199	5501
--	------------------------	---	-------------

▼ Baro-VNAV NA when using Manchester altimeter setting. If local altimeter setting not received, use Manchester altimeter setting and increase all DAs/MDAs 40 feet. For uncompensated Baro-VNAV systems, LNAV/VNAV NA below -15°C (5°F) or above 48°C (119°F). DME/DME RNP -0.3 NA. Visibility reduction by helicopters NA.

MISSED APPROACH: Climb to 3000 direct GUCED and left turn via 227° track to JOHNZ and hold, continue climb-in-hold to 3000.

ATIS 125.1	BOSTON APP CON 124.9 269.075	NASHUA TOWER ★ 133.2 (CTAF) 0	GND CON 121.8	CLNC DEL 121.8
----------------------	--	---	-------------------------	--------------------------

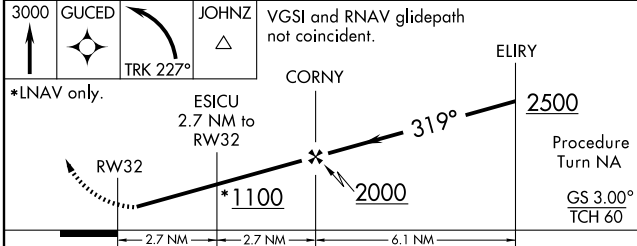


NE-1, 22 OCT 2009 to 19 NOV 2009

NE-1, 22 OCT 2009 to 19 NOV 2009

Procedure NA for arrivals at LOBBY via V431 West bnd.

↑ 3000 GUCED
 ↙ JOHNZ TRK 227°
 VGSI and RNAV glidepath not coincident.



CATEGORY	A	B	C	D
LPV DA		528-1¼	336 (400-1¼)	
LNAV/VNAV DA		617-1½	425 (500-1½)	
LNAV MDA	660-1	468 (500-1)	660-1¼ 468 (500-1¼)	660-1½ 468 (500-1½)
CIRCLING	800-1½	601 (700-1½)	820-1¾ 621 (700-1¾)	820-2 621 (700-2)

