

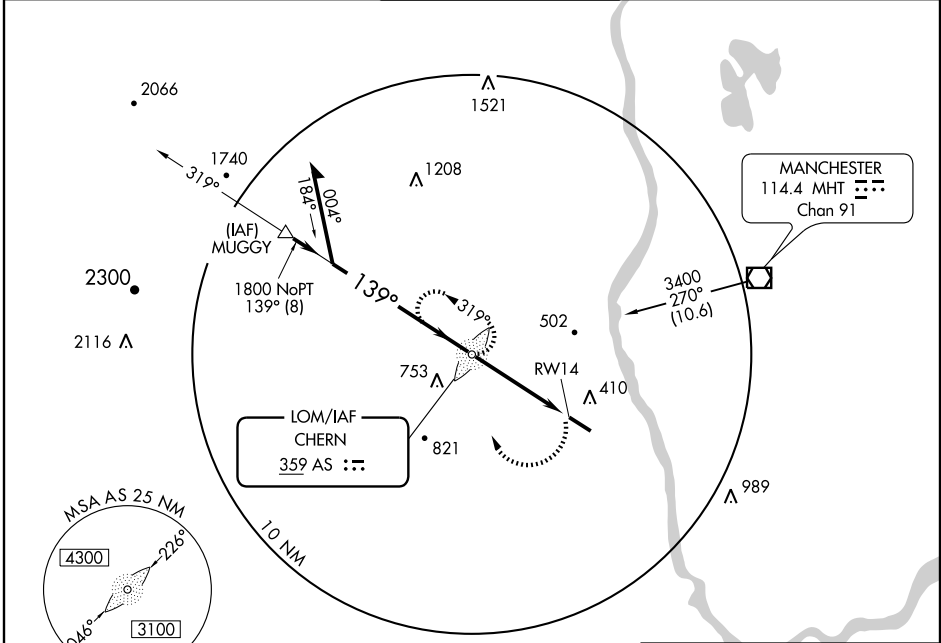
NDB or GPS RWY 14

NASHUA/BOIRE FIELD (ASH)

LOM AS 359	APP CRS 139°	Rwy Idg TDZE Apt Elev	5501 200 200
----------------------	------------------------	-----------------------------	---

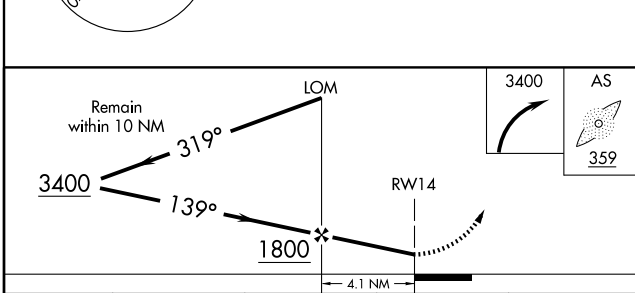
<p>When local altimeter not received, use Manchester altimeter setting.</p>	<p>MALS</p>	<p>MISSED APPROACH: Climbing right turn to 3400 direct AS LOM and hold.</p>
---	-------------	---

ATIS 125.1	BOSTON APP CON 124.9 269.075	NASHUA TOWER ★ 133.2 (CTAF) 0	GND CON 121.8	CLNC DEL 121.8
----------------------	--	---	-------------------------	--------------------------



NE-1, 22 OCT 2009 to 19 NOV 2009

NE-1, 22 OCT 2009 to 19 NOV 2009



ELEV 200

HIRL Rwy 14-32	0
REIL Rwy 32	0

FAF to MAP 4.1 NM					
Knots	60	90	120	150	180
Min:Sec	4:06	2:44	2:03	1:38	1:22

CATEGORY	MANCHESTER ALTIMETER SETTING		MINIMUMS	
	A	B	C	D
S-14	840- $\frac{3}{4}$	640 (700- $\frac{3}{4}$)	840-1 $\frac{1}{4}$ 640 (700-1 $\frac{1}{4}$)	840-1 $\frac{1}{2}$ 640 (700-1 $\frac{1}{2}$)
CIRCLING	840-1	640 (700-1)	840-1 $\frac{3}{4}$ 640 (700-1 $\frac{3}{4}$)	840-2 640 (700-2)
S-14	860- $\frac{3}{4}$	660 (700- $\frac{3}{4}$)	860-1 $\frac{1}{4}$ 660 (700-1 $\frac{1}{4}$)	860-1 $\frac{1}{2}$ 660 (700-1 $\frac{1}{2}$)
CIRCLING	860-1	660 (700-1)	860-1 $\frac{3}{4}$ 660 (700-1 $\frac{3}{4}$)	860-2 660 (700-2)