

# RNAV (GPS) RWY 25

DUBOIS RGNL (DUJ)

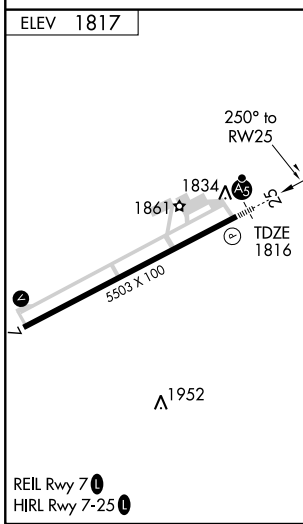
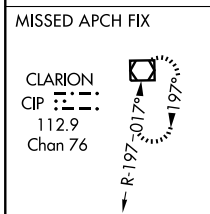
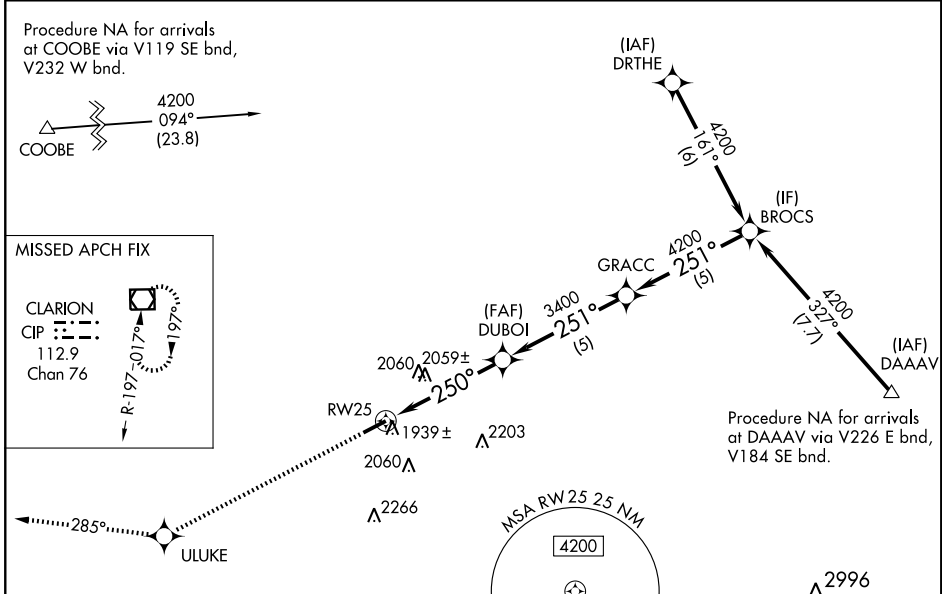
WAAS CH <b>97407</b> <b>W25A</b>	APP CRS <b>250°</b>	Rwy Idg <b>5503</b> TDZE <b>1816</b> Apt Elev <b>1817</b>
--	------------------------	---

For uncompensated Baro-VNAV systems, LNAV/VNAV NA below -18°C (0°F) or above 45°C (113°F). DME/DME RNP-0.3 NA. When local altimeter setting not received, use Clearfield altimeter setting and increase all DAs 96 feet and all MDAs 100 feet and LPV all Cats, LNAV Cat C, Circling Cat C visibilities ½ mile and LNAV/VNAV all Cats and LNAV Cat D visibilities ½ mile. For inoperative MALS R when using Clearfield altimeter setting; increase LPV all Cats visibility ½ mile. Baro-VNAV and VDP NA when using Clearfield altimeter setting.



**MISSED APPROACH:**  
Climb to 4000 direct ULUKE and via 285° track to CIP VOR/DME and hold.

ASOS <b>119.025</b>	CLEVELAND CENTER <b>126.725 291.65</b>	UNICOM <b>123.0 (CTAF) 0</b>
------------------------	---	---------------------------------



4000	ULUKE	TRK 285°	CIP 112.9	GRACC	BROCS
				251°	4200
				4200	Procedure Turn NA
				GS 3.00° TCH 57	
				1.4	3.3 NM
				5 NM	5 NM
CATEGORY	A	B	C	D	
LPV DA		2066-1/2	250 (300-1/2)		
LNAV/VNAV DA		2209-3/4	393 (400-3/4)		
LNAV MDA	2320-1/2	504 (600-1/2)	2320-1	504 (600-1)	
CIRCLING	2320-1	503 (600-1)	2320-1 1/2	2380-2	563 (600-2)

# RNAV (GPS) RWY 25

NE-4, 22 OCT 2009 to 19 NOV 2009

NE-4, 22 OCT 2009 to 19 NOV 2009