


ILS or LOC RWY 25

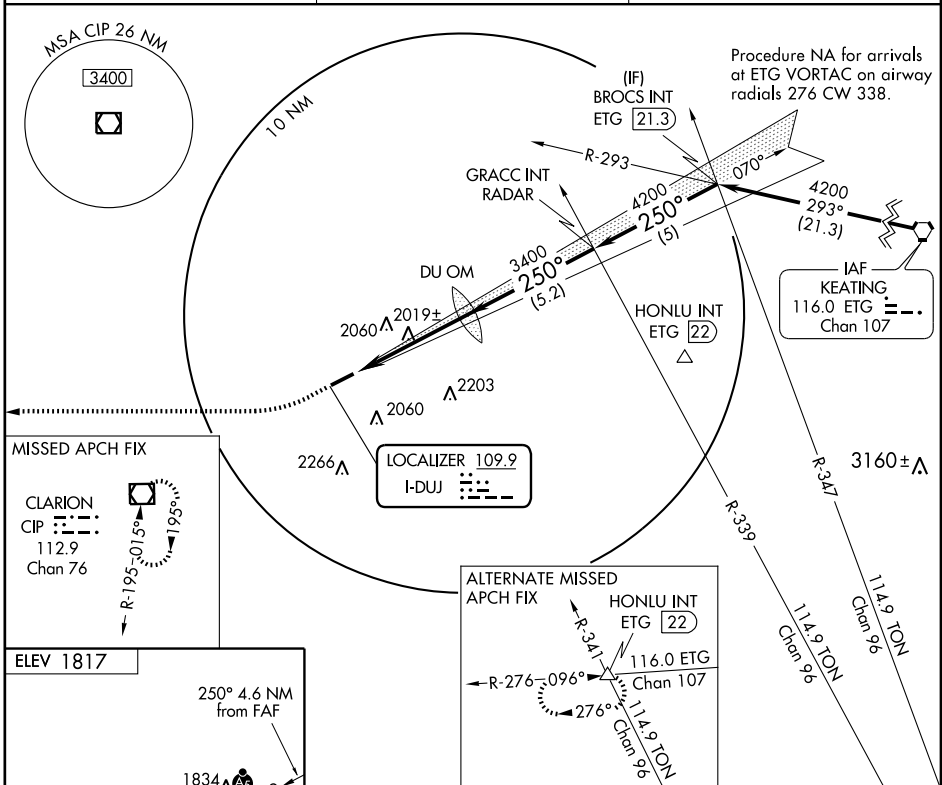
DUBOIS RGNL (DUJ)

LOC I-DUJ 109.9	APP CRS 250°	Rwy ldg TDZE Apt Elev	5503 1816 1817
---------------------------	------------------------	-----------------------------	---

When local altimeter setting not received, use Clearfield altimeter setting and increase DA to 2112 feet and all MDAs 100 feet and S-LOC 25 visibility Cats C/D and Circling Cat C ¼ mile. For inoperative MALS/R when using Clearfield altimeter setting, increase S-ILS 25 all Cats visibility ½ mile.

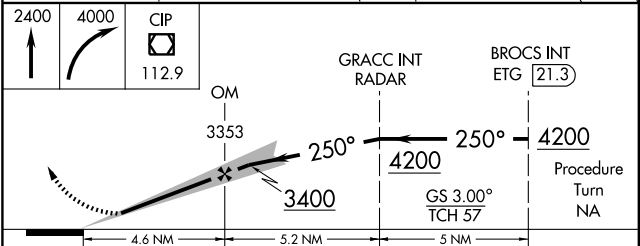
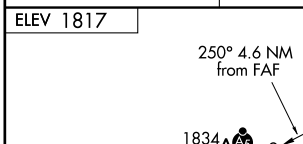
MALS/R

MISSED APPROACH:
 Climb to 4000 then climbing right turn to 4000 direct CIP VOR/DME and hold.


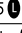
ASOS 119.025	CLEVELAND CENTER 126.725 291.65	UNICOM 123.0 (CTAF) 
------------------------	---	---



NE-4, 22 OCT 2009 to 19 NOV 2009

NE-4, 22 OCT 2009 to 19 NOV 2009



REIL Rwy 7 	HIRL Rwy 7-25 	FAF to MAP 4.6 NM	Knots		Min:Sec	
			60	90	120	150
			4:36	3:04	2:18	1:50
			180	1:50	1:32	
CATEGORY	A	B	C	D		
S-ILS 25	2016-½ 200 (200-½)					
S-LOC 25	2280-½	464 (500-½)	2280-¾	464 (500-¾)	2280-1	464 (500-1)
CIRCLING	2300-1	2320-1	2320-1½	2380-2		
	483 (500-1)	503 (600-1)	503 (600-1½)	563 (600-2)		