

FLAGSTAFF, ARIZONA

AL-5034 (FAA)

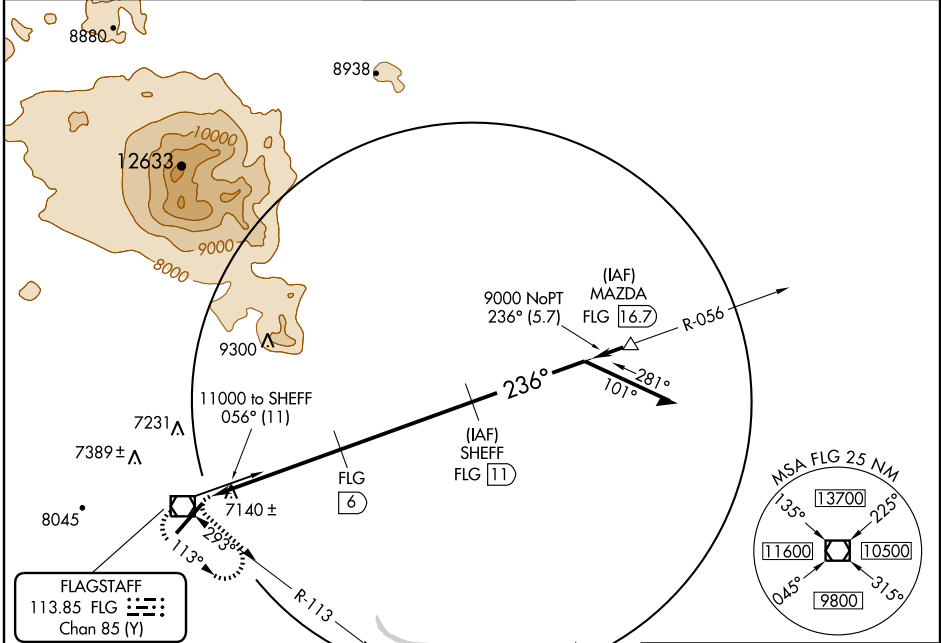
VOR/DME RWY 21

FLAGSTAFF PULLIAM (FLG)

VOR/DME FLG 113.85 Chan 85 (Y)	APP CRS 236°	Rwy Idg 7000 TDZE 7000 Apt Elev 7011
--	------------------------	---

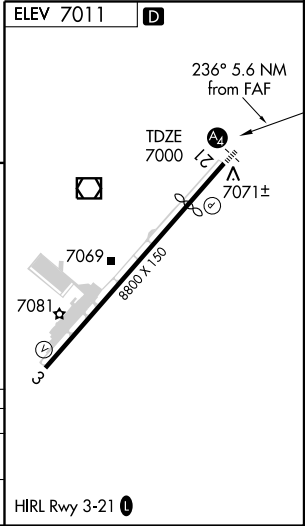
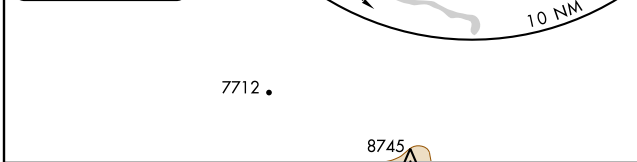
Inoperative table does not apply.	MALS -E- 	MISSED APPROACH: Climbing left turn to 9000 via FLG R-113, reverse course climbing to 11000 direct to FLG VOR/DME and hold.
-----------------------------------	-----------------	--

ATIS 125.8	ALBUQUERQUE CENTER 124.5 306.2	FLAGSTAFF TOWER ★ 134.55 (CTAF) 226.3	GND CON 121.9	UNICOM 122.95
----------------------	--	---	-------------------------	-------------------------



SW-4, 22 OCT 2009 to 19 NOV 2009

SW-4, 22 OCT 2009 to 19 NOV 2009



9000	11000	FLG	SHEFF
REVERSE COURSE	↑	113.85	FLG 11
FLG R-113		FLG 1	FLG 6
		8200	9000
0.6	5 NM	5 NM	

CATEGORY	A	B	C	D
S-21	7800-1 800 (800-1)	7800-1¼ 800 (800-1¼)	7800-2¼ 800 (800-2¼)	7800-2½ 800 (800-2½)
CIRCLING	7800-1 789 (800-1)	7800-1¼ 789 (800-1¼)	7800-2¼ 789 (800-2¼)	7800-2½ 789 (800-2½)

FLAGSTAFF, ARIZONA
Orig-B 08325

35°08'N-111°40'W

FLAGSTAFF PULLIAM (FLG)

VOR/DME RWY 21