


RNAV (GPS) Y RWY 21

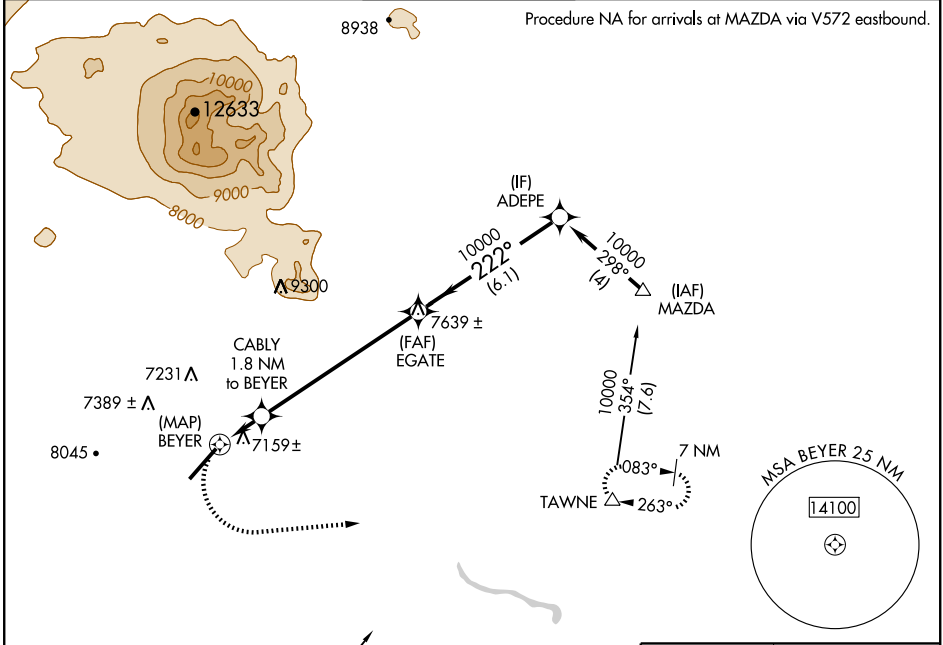
FLAGSTAFF PULLIAM (FLG)

| | | |
|-------------|----------|-------------|
| APP CRS | Rwy Idg | 7000 |
| 222° | TDZE | 7003 |
| | Apt Elev | 7014 |

When local altimeter setting not received, procedure NA.
 DME/DME RNP -0.3 NA.
 Visibility reduction by helicopters NA.

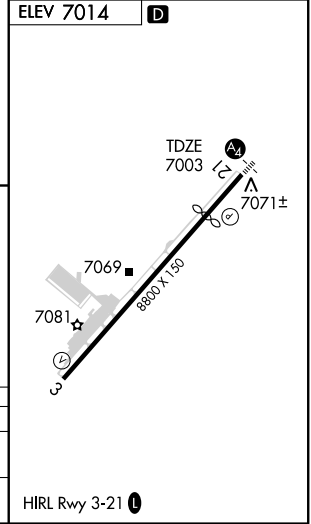
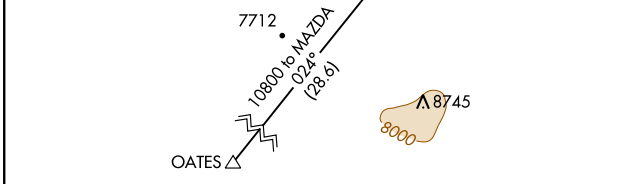
MALS 
 MISSED APPROACH: Climbing left turn to 10500 direct TAWNE and hold, continue climb-in-hold to 10500.



| | | | | |
|----------------------|--|---|-------------------------|-------------------------|
| ATIS 125.8 | ALBUQUERQUE CENTER 124.5 306.2 | FLAGSTAFF TOWER ★ 134.55 (CTAF) 0 226.3 | GND CON 121.9 | UNICOM 122.95 |
|----------------------|--|---|-------------------------|-------------------------|



SW-4, 22 OCT 2009 to 19 NOV 2009

SW-4, 22 OCT 2009 to 19 NOV 2009



| | | | |
|--|---|-----------------------|-------------------------|
| 10500 | TAWNE | EGATE | ADEPE |
|  |  | | Procedure Turn NA |
| | CABLY 1.8 NM to BEYER | | |
| | BEYER $\leq 3.10^\circ$ TCH 51 | EGATE | ADEPE |
| | 7800 | 10000 | 10000 |
| | 0.4 | 1.8 NM | 6.8 NM |
| CATEGORY | A | B | C |
| RNAV MDA | 7420-1 | 417 (500-1) | 7420-1½ 417 (500-1½) |
| CIRCLING | 7520-1 506 (600-1) | 7560-1 546 (600-1) | 7560-1½ 546 (600-1½) |
| | | | D |
| | | | 7420-1⅞ 417 (500-1⅞) |
| | | | 7580-2 566 (600-2) |