

CARIBOU, MAINE

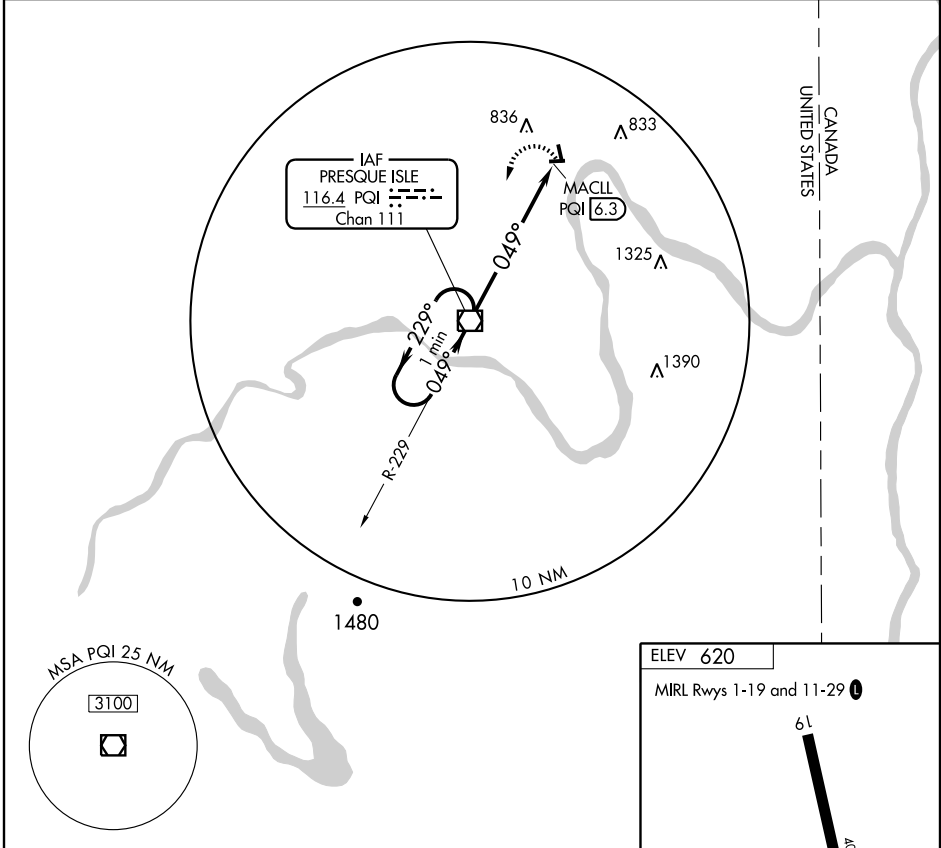
AL-5033 (FAA)

VOR-A
CARIBOU MUNI (CAR)

VOR/DME PQI 116.4 Chan 111	APP CRS 049°	Rwy Idg TDZE Apt Elev	N/A N/A 620
---	------------------------	-----------------------------	--

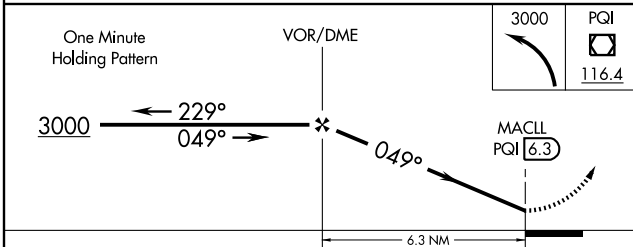
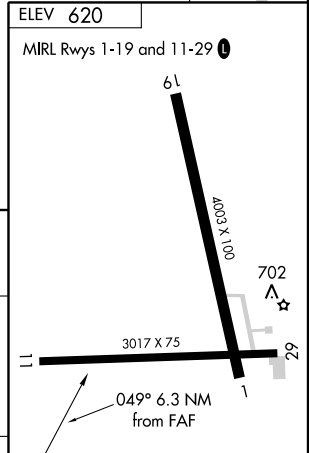
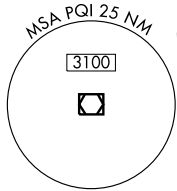
▽ MISSED APPROACH: Climbing left turn to 3000 direct PQI VOR/DME and hold.

ASOS 135.125	BOSTON CENTER 124.75 239.5	CLNC DEL 124.75	UNICOM 122.8 (CTAF) 0
------------------------	--------------------------------------	---------------------------	---------------------------------



NE-1, 22 OCT 2009 to 19 NOV 2009

NE-1, 22 OCT 2009 to 19 NOV 2009



CATEGORY	A	B	C	D
CIRCLING	1140-1	520 (600-1)	1140-1½ 520 (600-1½)	NA

FAF to MAP 6.3 NM					
Knots	60	90	120	150	180
Min:Sec	6:18	4:12	3:09	2:31	2:06

CARIBOU, MAINE
Amdt 11 04274

46°52'N - 68°01'W

CARIBOU MUNI (CAR)
VOR-A