

RNAV (GPS) RWY 35

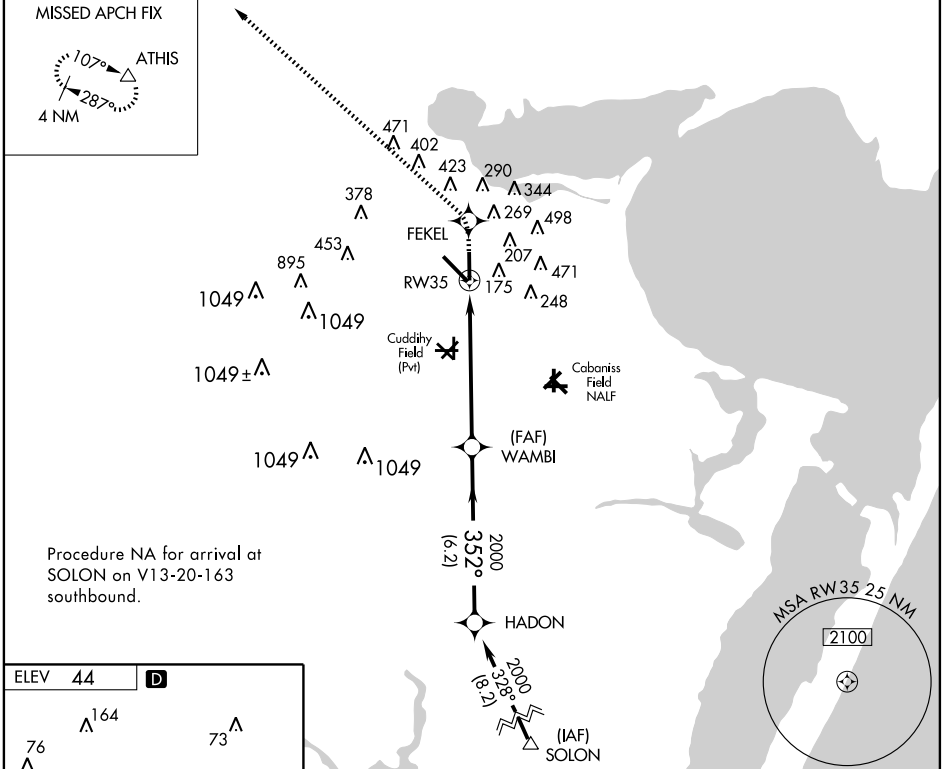
CORPUS CHRISTI INTL (CRP)

APP CRS 352°	Rwy Idg 6081
	TDZE 40
	Apt Elev 44

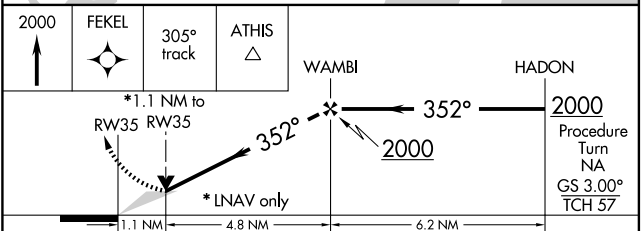
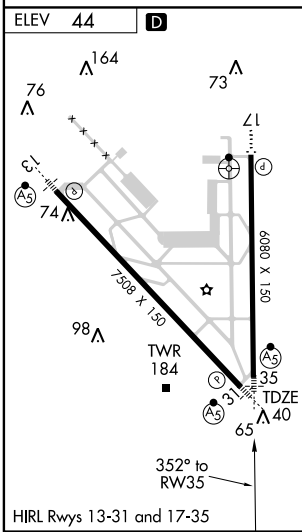
▼ For inoperative MALSR, increase LNAV Cat. D visibility to 6000. Baro-VNAV NA below -15°C (5°F).
▲ NA GPS or RNP-0.3 required. DME/DME RNP-0.3 NA.
Ⓜ MALSR

MISSED APPROACH: Climb to 2000 direct FEKEL via 305° track to ATHIS and hold.

ATIS 126.8	CORPUS APP CON 120.9 348.725	CORPUS TOWER 119.4 257.8	GND CON 121.9 269.15	CLNC DEL 118.55	UNICOM 122.95
----------------------	--	------------------------------------	--------------------------------	---------------------------	-------------------------



Procedure NA for arrival at SOLON on V13-20-163 southbound.



CATEGORY	A	B	C	D	E
GLS PA DA	NA				
LNAV/VNAV DA	440/40 400 (400-¾)				
LNAV MDA	440/24 400 (400-½)		440/50 400 (400-1)		
CIRCLING	500-1¼ 456 (500-1¼)	520-1¼ 476 (500-1¼)	580-1½ 536 (600-1½)	740-2¼ 696 (700-2¼)	860-3 816 (900-3)

SC-3, 22 OCT 2009 to 19 NOV 2009

SC-3, 22 OCT 2009 to 19 NOV 2009