

RNAV (GPS) RWY 31

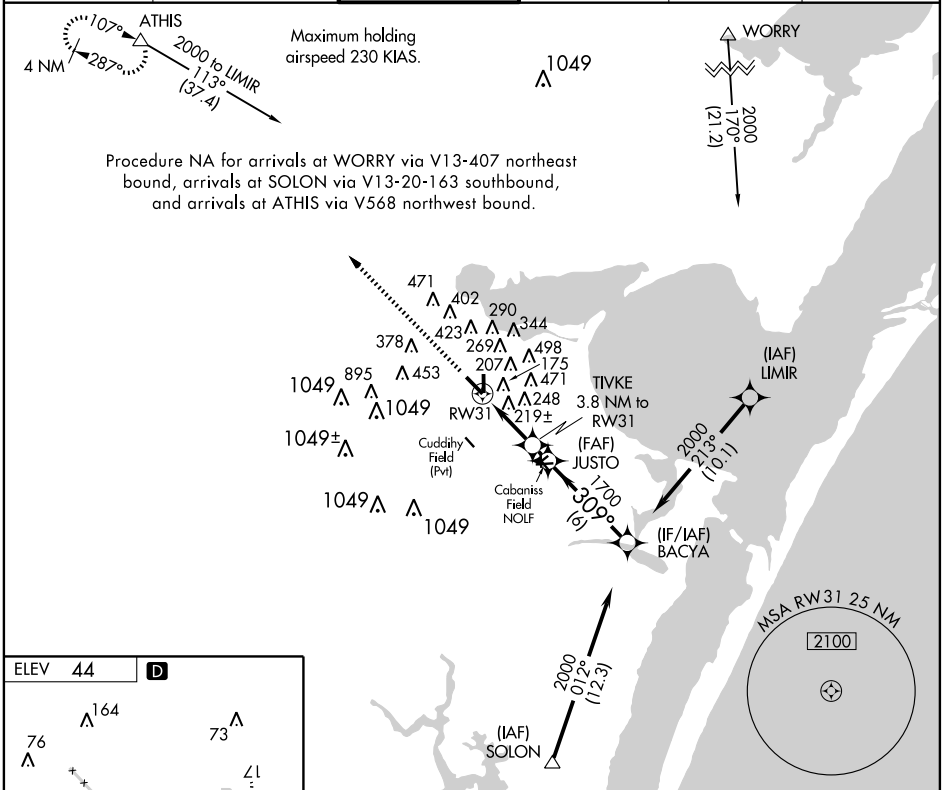
CORPUS CHRISTI INTL (CRP)

WAAS CH 60914 W31A	APP CRS 309°	Rwy Idg 7508 TDZE 44 Apt Elev 44
--	------------------------	---

⚠ For inoperative MALS, increase LPV Cat. E visibility to ¾, LNAV/VNAV Cat. E visibility to 1½, and LNAV Cat. E visibility to 1¾. For uncompensated Baro-VNAV systems, LNAV/VNAV NA below -15°C (5°F) or above 48°C (120°F). DME/DME RNP-0.3 NA.

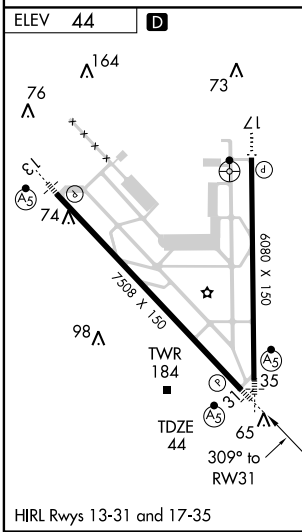
MALS MISSED APPROACH: Climb to 2000 direct ATHIS and hold.

ATIS 126.8	CORPUS APP CON 120.9 348.725	CORPUS TOWER 119.4 257.8	GND CON 121.9 269.15	CLNC DEL 118.55	UNICOM 122.95
----------------------	--	------------------------------------	--------------------------------	---------------------------	-------------------------



SC-3, 22 OCT 2009 to 19 NOV 2009

SC-3, 22 OCT 2009 to 19 NOV 2009



2000	ATHIS	BACYA			
↑	△	2000			
* NNAV only		* 1.3 NM to RWY 31		TIVKE 3.8 NM to RWY 31	
RWY 31		RWY 31		RWY 31	
1300		1700		309°	
1.3 NM		2.5 NM		1.2 NM	
6 NM					
CATEGORY	A	B	C	D	E
LPV DA		294-½		250 (300-½)	
LNAV/VNAV DA		450-1		406 (500-1)	
LNAV MDA	520-½	476 (500-½)	520-¾ 476 (500-¾)	520-1 476 (500-1)	520-1¼ 476 (500-1¼)
CIRCLING	520-1	476 (500-1)	640-1½ 596 (600-1½)	740-2¼ 696 (700-2¼)	860-3 816 (900-3)

Procedure Turn NA

GS 3.00° TCH 54