

LOC/DME I-OYC 109.5	APP CRS 352°	Rwy Idg TDZE Apt Elev	6080 40 44
Chan 32			

ILS or LOC RWY 35

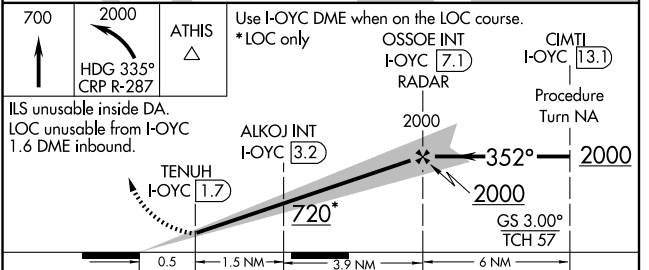
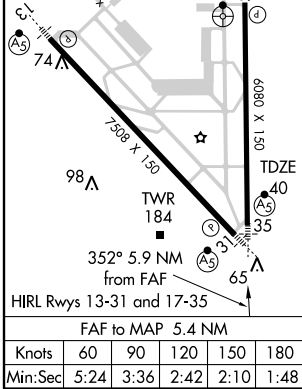
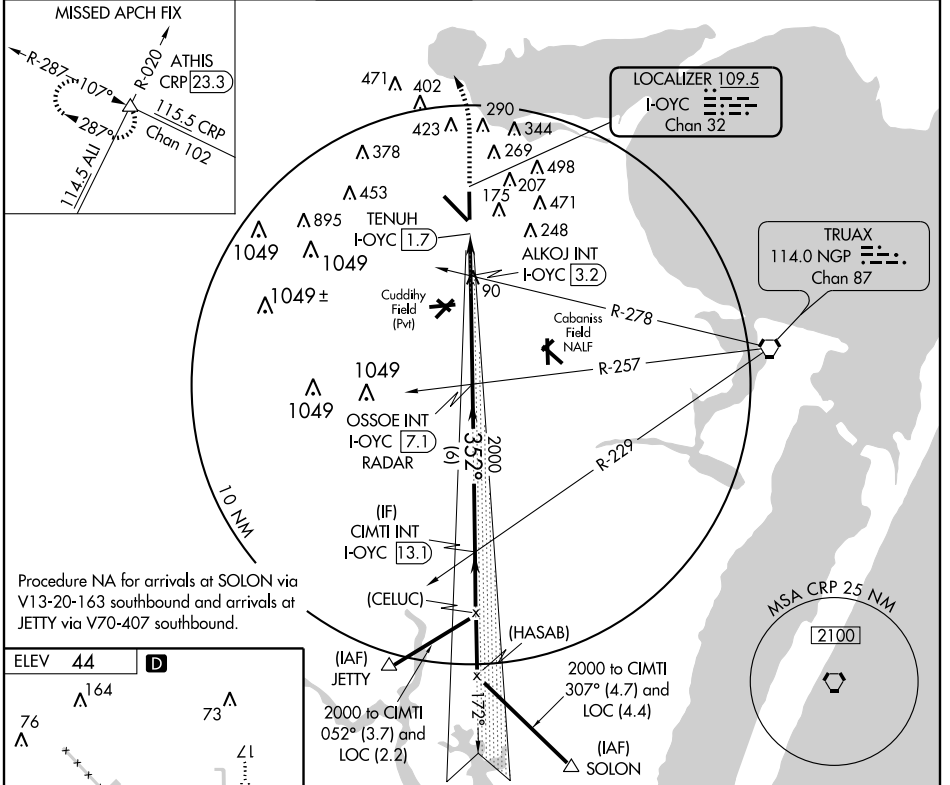
CORPUS CHRISTI INTL (CRP)

▲ For inoperative MALSR, increase S-ILS 35 Cat E visibility to RVR 4000 and S-LOC 35 Cat D visibility to RVR 5000, Cat E to RVR 6000.

▲ MALSR

MISSED APPROACH: Climb to 700 then climbing left turn to 2000 via heading 335° and CRP R-287 to ATHIS INT/CRP 23.3 DME and hold.

ATIS 126.8	CORPUS APP CON 120.9 348.725	CORPUS TOWER 119.4 257.8	GND CON 121.9 269.15	CLNC DEL 118.55	UNICOM 122.95
----------------------	--	------------------------------------	--------------------------------	---------------------------	-------------------------



CATEGORY	A	B	C	D	E
S-ILS 35	240/24 200 (200-½)				
S-LOC 35	380/24 340 (400-½) 380/40 340 (400-¾)				
CIRCLING	500-1 456 (500-1)	520-1 476 (500-1)	580-1½ 536 (600-1½)	740-2¼ 696 (700-2¼)	860-3 816 (900-3)

SC-3, 22 OCT 2009 to 19 NOV 2009

SC-3, 22 OCT 2009 to 19 NOV 2009