

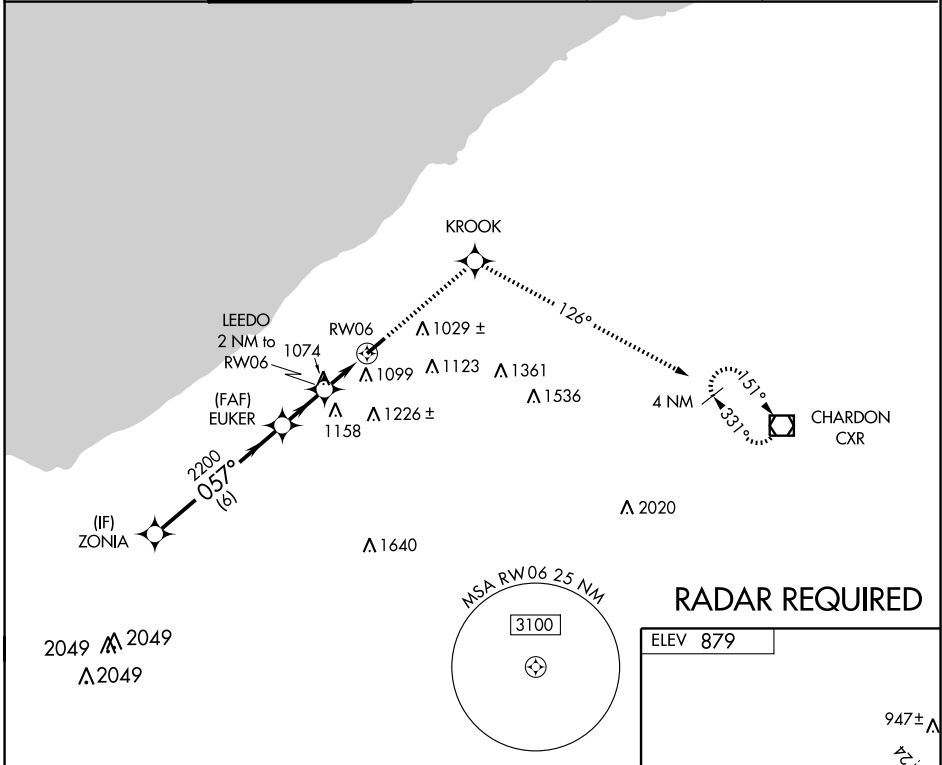
**RNAV (GPS) RWY 6**  
CLEVELAND/CUYAHOGA COUNTY (CGF)

APP CRS <b>057°</b>	Rwy Idg <b>5102</b>
	TDZE <b>873</b>
	Apt Elev <b>879</b>

**▽** DME/DME RNP-0.3 NA. Visibility reduction by helicopters NA.  
**▲** When local altimeter setting not received, use Cleveland-Hopkins Intl altimeter setting and increase all MDA 60 feet. Increase LNAV Cat D and Circling Cat C visibility ¼ mile.

**MISSED APPROACH:** Climb to 3100 direct KROOK and via 126° Track to CXR VOR/DME and hold.

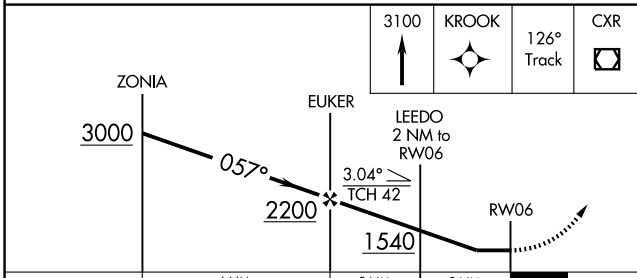
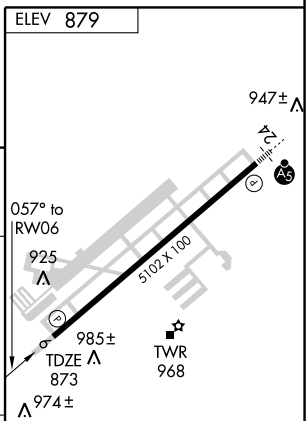
CLEVELAND APP CON <b>125.35 354.025</b>	COUNTY TOWER★ <b>118.5 (CTAF)</b>	GND CON <b>121.85</b>	CLNC DEL <b>121.85</b>	UNICOM <b>122.95</b>
--	--------------------------------------	--------------------------	---------------------------	-------------------------



EC-2, 22 OCT 2009 to 19 NOV 2009

EC-2, 22 OCT 2009 to 19 NOV 2009

**RADAR REQUIRED**



CATEGORY	A	B	C	D
LNAV MDA	1380-1	507 (600-1)	1380-1½	507 (600-1½)
CIRCLING	1400-1 521 (600-1)	1420-1 541 (600-1)	1420-1½ 541 (600-1½)	1480-2 601 (700-2)