

LOC/DME I-CGF 111.1 Chan 48	APP CRS 237°	Rwy Idg TDZE Apt Elev	5102 879 879
--	------------------------	-----------------------------	---

ILS or LOC RWY 24

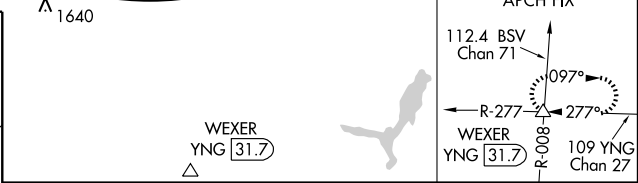
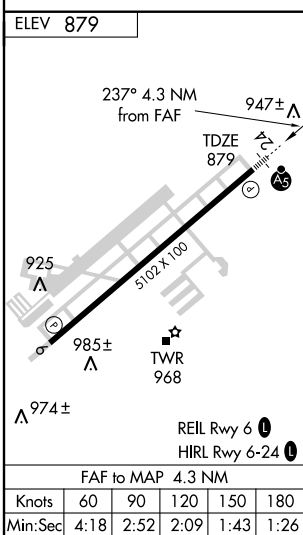
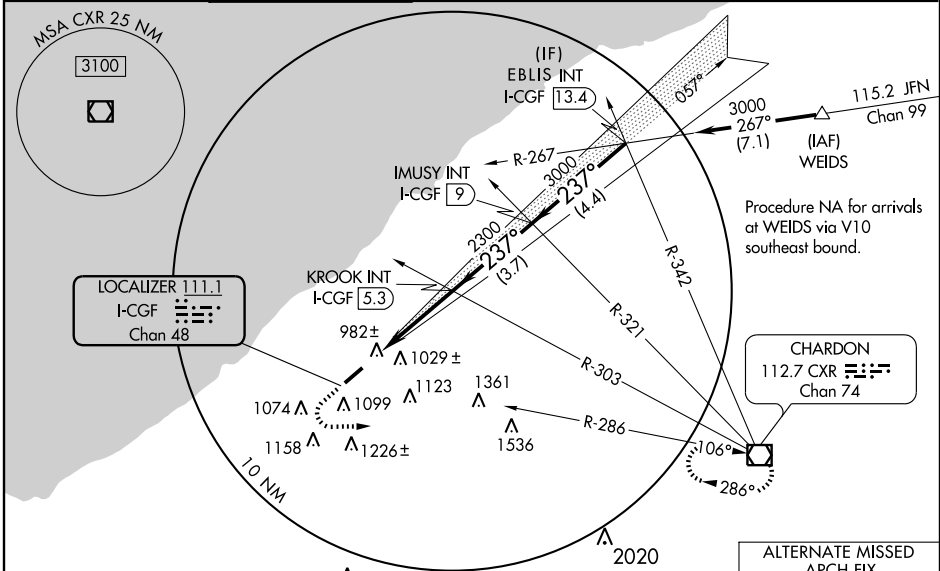
CLEVELAND/CUYAHOGA COUNTY (CGF)

⚠ For inoperative MALSR, increase S-LOC 24 Cat A/B/C visibility to 1 mile. Visibility reduction by helicopters NA. For inoperative MALSR, when using Cleveland-Hopkins Intl altimeter setting, increase S-ILS 24 all Cats visibility to 1½ mile and S-LOC 24 Cat A/B visibility to 1 mile. When local altimeter setting not received, use Cleveland-Hopkins Intl altimeter setting and increase DA 56 feet, and all MDA 60 feet. Increase circling Cat C visibility ¼ mile. VDP NA when using Cleveland-Hopkins Intl altimeter setting.

MALSR

MISSED APPROACH: Climb to 1600, then climbing left turn to 3100 via CXR VOR/DME R-286 to CXR VOR/DME and hold.

CLEVELAND APP CON 125.35 354.025	COUNTY TOWER★ 118.5 (CTAF)	GND CON 121.85	CLNC DEL 121.85	UNICOM 122.95
--	--------------------------------------	--------------------------	---------------------------	-------------------------



1600	3100	CXR R-286 112.7	CXR [112.7]	KROOK INT I-CGF [5.3]	IMUSY INT I-CGF [9]	EBLIS INT I-CGF [13.4]
2300	2300	I-CGF [1]	I-CGF [2]	2300	237° 3000	3000
-1 NM		-3.3 NM		-3.7 NM		-4.4 NM
CATEGORY	A	B	C	D		
S-ILS 24	1192-¾		313 (400-¾)			
S-LOC 24	1240-¾		361 (400-¾)			
CIRCLING	1400-1 521 (600-1)	1420-1 541 (600-1)	1420-1½ 541 (600-1½)	1480-2 601 (700-2)		

GS 3.00° TCH 50

Procedure Turn NA

EC-2, 22 OCT 2009 to 19 NOV 2009

EC-2, 22 OCT 2009 to 19 NOV 2009