

ANDOVER, NEW JERSEY

AL-5026 (FAA)

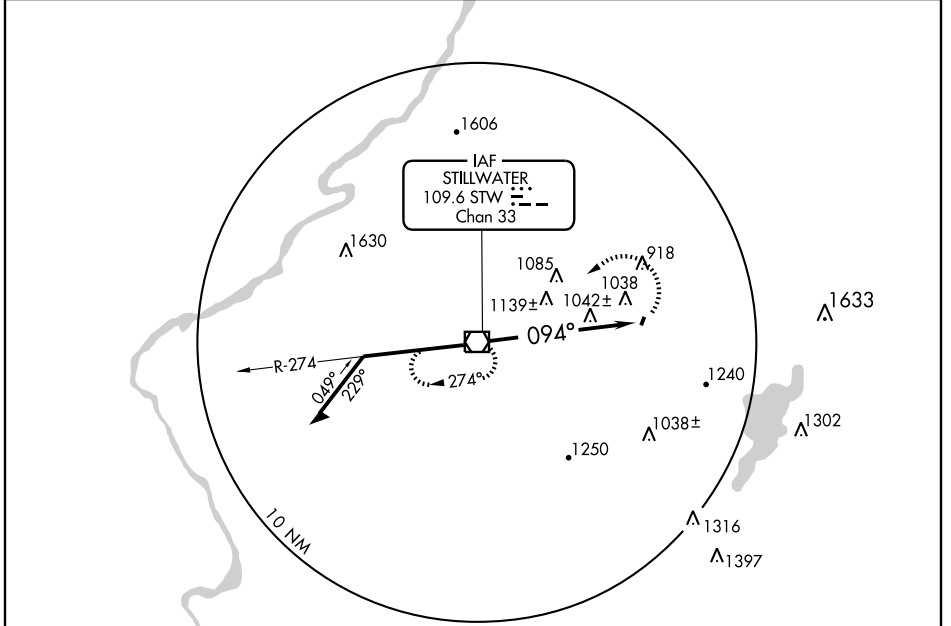
VOR-A

VOR/DME STW 109.6 Chan 33	APP CRS 094°	Rwy Idg TDZE Apt Elev	1981 N/A 583
---	------------------------	-----------------------------	---

ANDOVER / AEROFLEX-ANDOVER (12N)

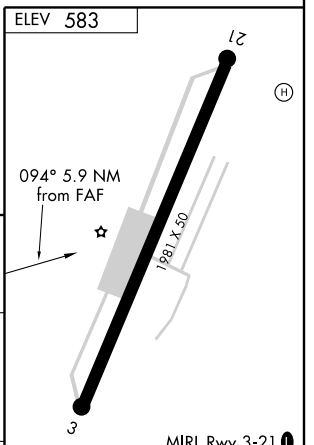
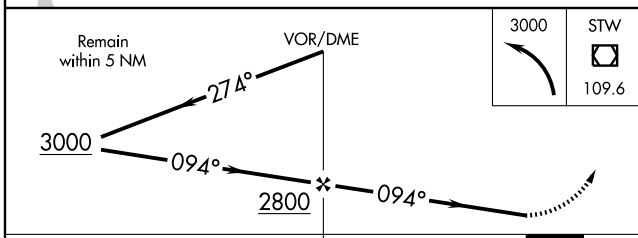
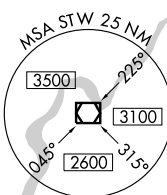
<p>▼ Procedure NA at night except by prior arrangement for runway lights. When local altimeter setting not received, use Caldwell altimeter setting and increase MDA 120 feet.</p> <p>▲</p>	<p>MISSED APPROACH: Climbing left turn to 3000 direct STW VOR/DME and hold.</p>
---	---

<p>NEW YORK APP CON 127.6 379.9</p>	<p>UNICOM 122.8 (CTAF)</p>	<p>122.85 0</p>
--	---------------------------------------	-------------------------------



NE-2, 22 OCT 2009 to 19 NOV 2009

NE-2, 22 OCT 2009 to 19 NOV 2009



CATEGORY	A	B	C	D	FAF to MAP 5.9 NM					
CIRCLING	1560-1¼ 977 (1000-1¼)		NA		Knots	60	90	120	150	180
					Min:Sec	5:54	3:56	2:57	2:22	1:58

ANDOVER, NEW JERSEY
Amdt 8 08297

41°01'N - 74°44'W

ANDOVER / AEROFLEX-ANDOVER (12N)
VOR-A