

# RNAV (GPS) RWY 9

FRANKLIN MUNI-JOHN BEVERLY ROSE (F'KN)

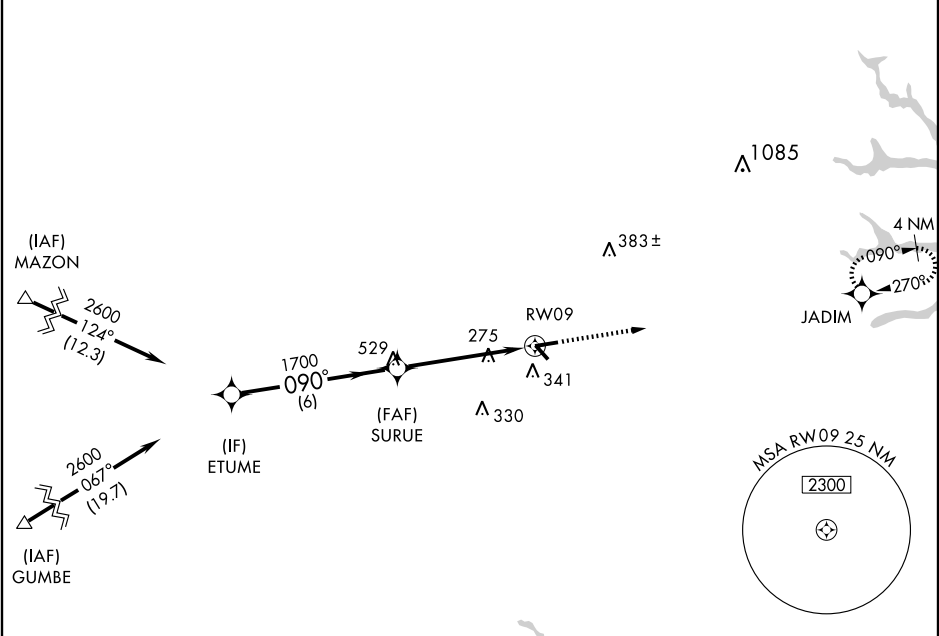
APP CRS <b>090°</b>	Rwy Idg <b>4977</b>
	TDZE <b>35</b>
	Apt Elev <b>41</b>

<b>▽</b> GPS or RNP-0.3 required.	MISSED APPROACH: Climb to 2600 direct JADIM WP and hold.
<b>△</b> NA DME/DME RNP-0.3 NA.	

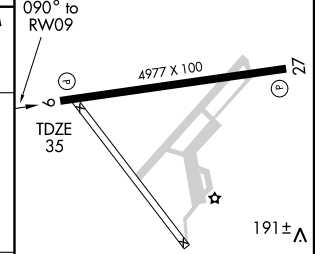
AWOS-3 <b>124.675</b>	NORFOLK APP CON <b>127.9 269.42</b>	GCO <b>135.075</b>	UNICOM <b>122.8 (CTAF) ①</b>
--------------------------	--	-----------------------	---------------------------------

NE-3, 22 OCT 2009 to 19 NOV 2009

NE-3, 22 OCT 2009 to 19 NOV 2009



	ELEV 41	2600	JADIM
ETUME			
Procedure Turn NA			
VGSI and descent angles not coincident.			
6 NM	4 NM	1 NM	



CATEGORY	A	B	C	D
LNVA MDA	580 - 1	545 (600-1)	580 - 1½ 545 (600-1½)	580 - 1¾ 545 (600-1¾)
CIRCLING	700 - 1	659 (700-1)	700 - 1¾ 659 (700-1¾)	700 - 2 659 (700-2)

MIRL Rwy 9-27 ①