

# RNAV (GPS) RWY 27

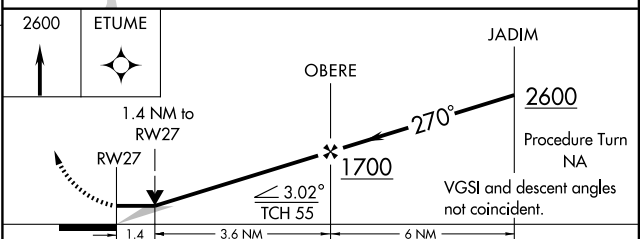
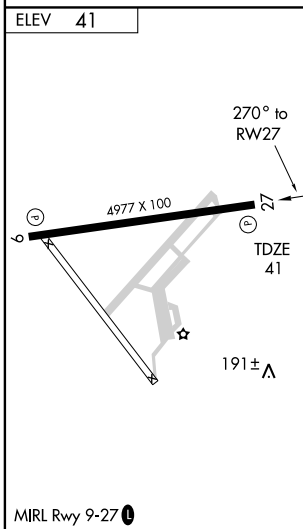
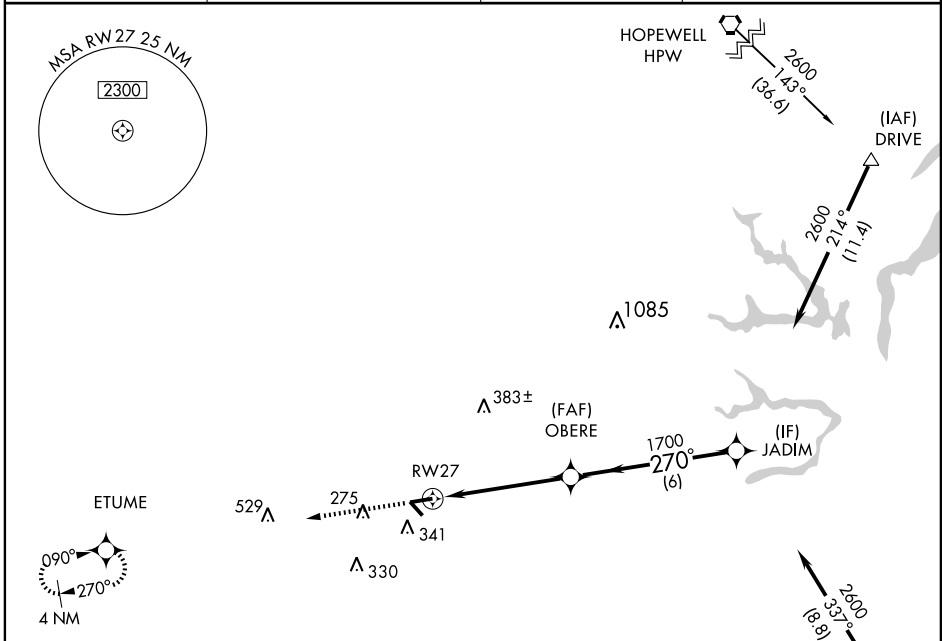
FRANKLIN MUNI-JOHN BEVERLY ROSE (FKN)

APP CRS <b>270°</b>	Rwy ldg <b>4977</b>
	TDZE <b>41</b>
	Apt Elev <b>41</b>

**NA** Inoperative table does not apply to LNAV Cat. C. GPS or RNP-0.3 required. DME/DME RNP-0.3 NA.

MISSED APPROACH: Climb to 2600 direct ETUME WP and hold.

AWOS-3 <b>124.675</b>	NORFOLK APP CON <b>127.9 269.42</b>	GCO <b>135.075</b>	UNICOM <b>122.8 (CTAF)</b>
--------------------------	----------------------------------------	-----------------------	-------------------------------



CATEGORY	A	B	C	D
LNAV MDA	460- <sup>3</sup> / <sub>4</sub> 419 (500- <sup>3</sup> / <sub>4</sub> )		460-1 <sup>1</sup> / <sub>4</sub> 419 (500-1 <sup>1</sup> / <sub>4</sub> )	
CIRCLING	700-1 659 (700-1)		700-1 <sup>3</sup> / <sub>4</sub> 659 (700-1 <sup>3</sup> / <sub>4</sub> )	700-2 659 (700-2)